

water, only better

cross connection checklist

As a recycled water customer, you're encouraged to check for cross-connections on your property every 12 months. A cross-connection is when the drinking water is incorrectly connected to a recycled water pipe and vice versa. By following the simple steps on this flyer, you can ensure your pipes are connected correctly.

step 1: turn off drinking water

Turn off your drinking water supply at the water meter outside your house. Leave the recycled water meter on.

step 2: let's go inside

One by one turn on all sink, bath and shower taps inside your house (hot and cold) and flush all toilets. Taps should run dry after a short period of time indicating they are correctly connected to the drinking water supply. Toilets should refill as normal to indicate they are correctly connected to the recycled water supply.

step 3: back outside

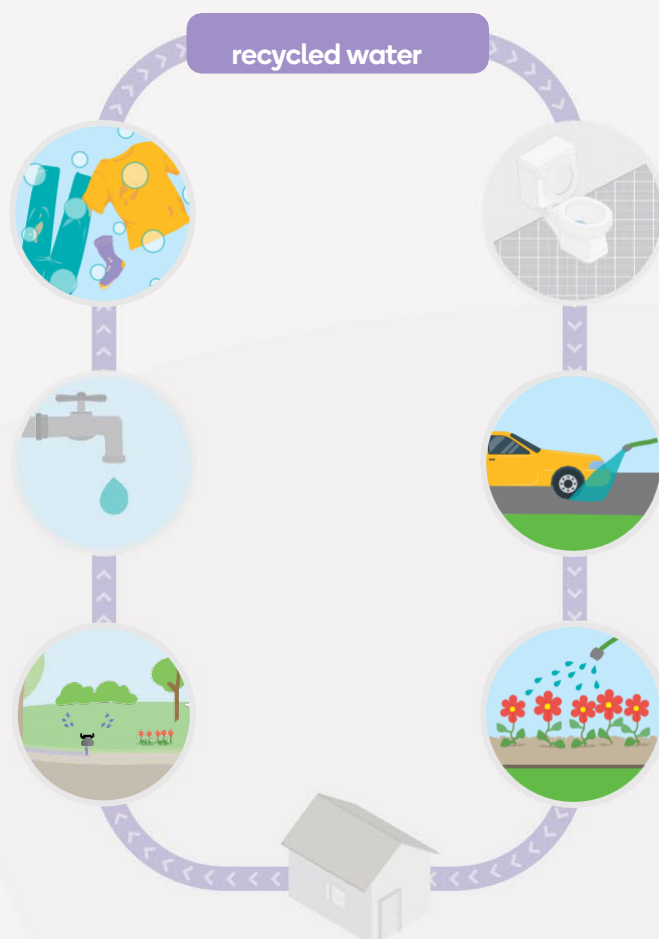
Turn on all drinking water taps, and purple recycled water taps outside your house. The drinking water taps should run dry after a short period of time indicating they are connected to the drinking water supply. The purple water taps should run as normal.

step 4: now the appliances

Turn the drinking water back on and turn the recycled water off to check your appliances. Turn on appliances to ensure they fill. Your dishwasher should fill as normal, but your washing machine should not, indicating it is correctly connected to recycled water.

step 5: one final job

Turn off all taps and ensure your drinking water and recycled water supplies are turned back on at the meter. When you turn your first tap on, do it slowly to allow any trapped air to escape.



Feel at ease, ensure you are connected properly

By using recycled water for things like gardening, flushing toilets and washing clothes – you're saving up to 70% of the drinking water you'd normally use.

install precautions

Remember to check that all purple taps outside your home have a removable handle and have the correct "Recycled water do not drink sign". These can be purchased at most plumbing and hardware stores.

Did you know, using recycled water helps the environment?

By using recycled water, you are:

- Thinking about the future for you, your family, and your community
- Balancing and maintaining your community's eco-system by keeping natural resources within the community and using them over and over again
- Preserving precious drinking water supplies from our dam drop by drop
- Harnessing liters of disused wastewater that is usually pumped out to the sea or local waterways



questions

If you have any queries or connection issues, please do not hesitate to contact us on **1300 803 803** between 8.30am and 5pm Monday to Friday (excluding public holidays)



SCAN HERE
TO ACCESS INFORMATION
CONCERNING SYSTEM
MAINTENANCE

altogethergroup.com.au

