

# water, only better

## Your water bills, explained.

In 2020–21, 755 megalitres of recycled water was provided to Altogether customers.

This is equivalent to saving over 200 million toilet flushes worth of drinking water and the same volume being discharged to the environment as waste.

Regardless of where you live in Pitt Town you receive two bills that cover water and wastewater services.

### Altogether-connected

#### 1 Altogether

This bill includes charges for:

- The fee to manage the wastewater produced by your home
- All the recycled water you use at your home

Your recycled water is charged at a lower rate than drinking water, so it's a good idea to use it for washing clothes, gardening, flushing toilets and cleaning surfaces.

Unlike residents living elsewhere, Altogether customers can feel at ease knowing that your wastewater is re-used and not being pumped into our waterways.

### Not Altogether-connected

#### 2 Sydney Water

This bill includes charges for:

- All the drinking water you consume

As an Altogether resident, you can save money by using recycled water instead of drinking water on things like washing clothes, watering the garden and flushing toilets.

#### 3 Council

All Pitt Town residents receive a Council bill that includes charges for standard council rates that fund waste removal, public libraries, sporting grounds and so on.

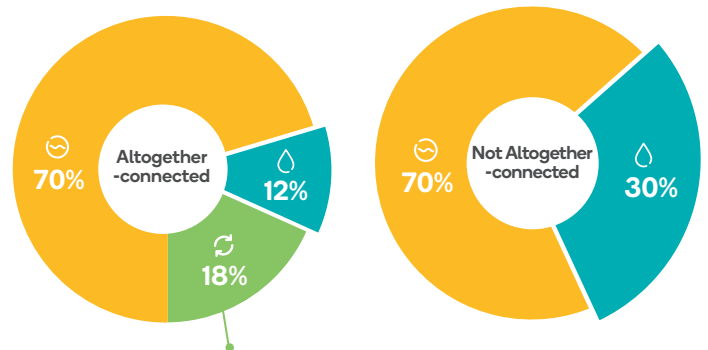
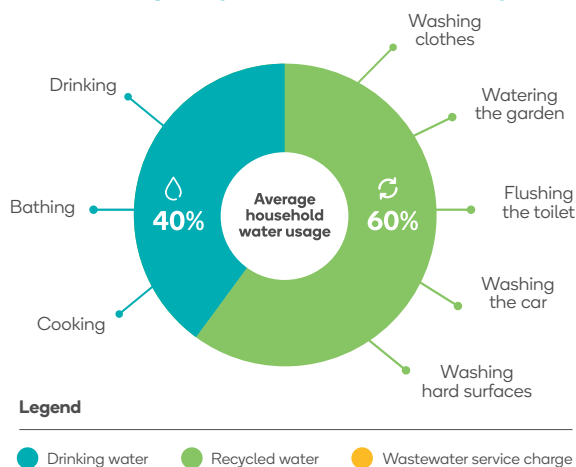
For people who aren't connected to the Altogether community, this bill adds on:

- The fee to manage the wastewater produced by your home

All residents are required to pay wastewater charges, but for residents of Altogether communities, these charges are included in your monthly Altogether bill.

This means Altogether customers like you save on your Council bill.

### How using recycled water affects your water bills



As an Altogether customer, 18% of your total water bill is charged at a lower rate compared to non-Altogether customers.

As an Altogether customer your meter is read monthly, and you're billed monthly – which makes it easier to track your usage from month to month.

Being part of an Altogether community gives you access to a lower cost, rainfall-independent water source so that you can control your water bill and your impact on the environment.