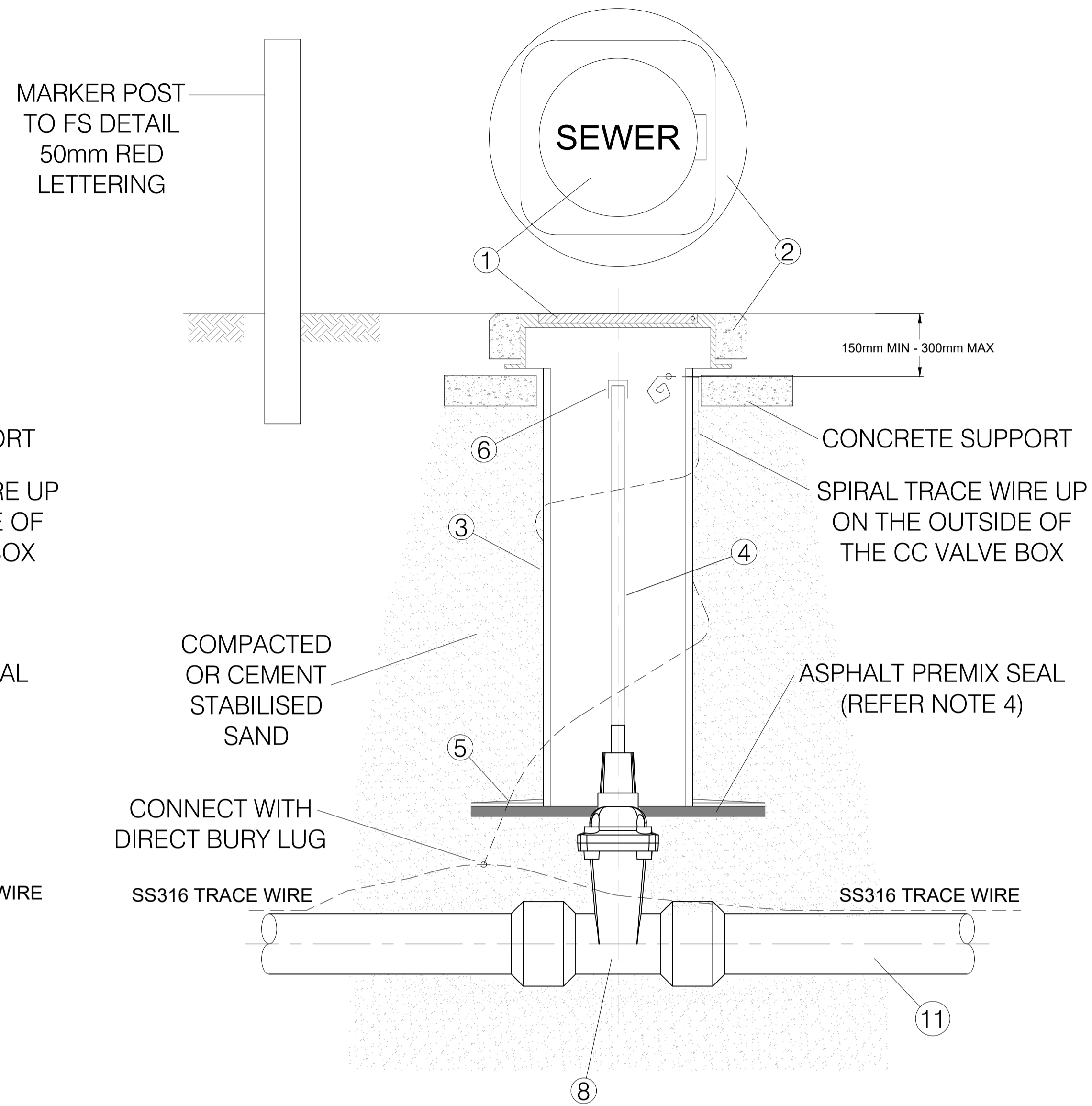
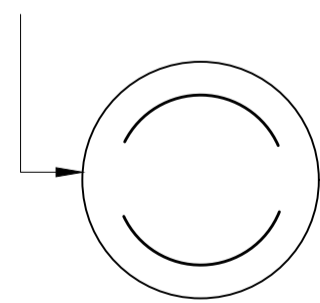


PE ENDED RESILIENT SEATED ISOLATION GATE VALVE FOR \geq DN 63 PE PIPE

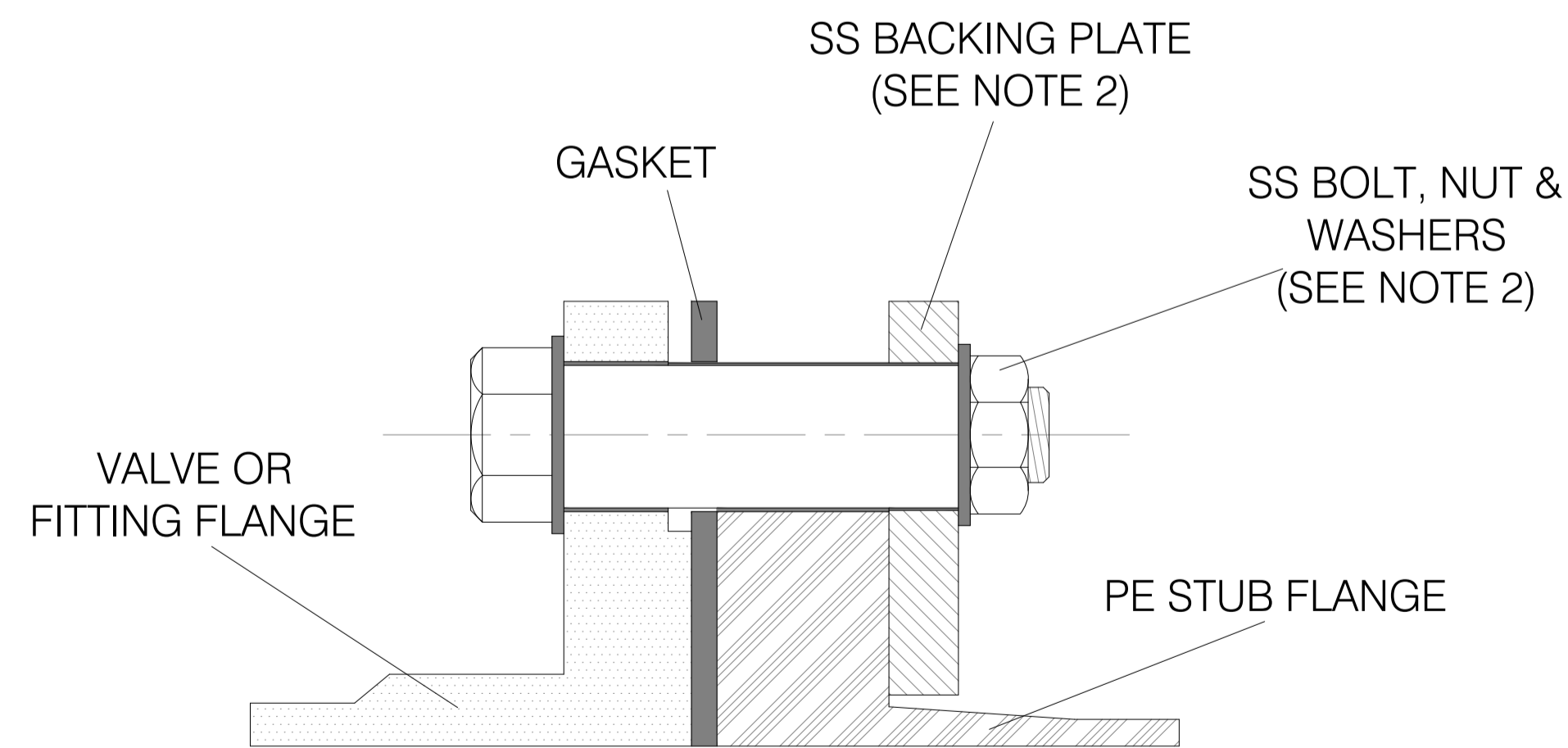


PE ENDED RESILIENT SEATED ISOLATION GATE VALVE FOR $<$ DN 63 PE PIPE

LABEL "PRESSURE SEWER CLOCKWISE CLOSING" - CIRCULAR CORROSION RESISTANT PLATE, (316 S/S OR TRAFFOLYTE) FIX WITH ADHESIVE (MASTIC) TO UNDERSIDE OF VALVE COVER. SIZED TO SUIT UNDERSIDE OF VALVE COVER LID.



DETAIL A - VALVE CAP NAMEPLATE



DETAIL B - PE BOLTED CONNECTION DETAIL

NOTES:

1. MINIMUM PRESSURE CLASS AND COMPOUND TYPE FOR ALL PIPEWORK AND FITTINGS IS TO BE PN 16/ SDR 11 PE 100
2. ALL BACKING RINGS, NUTS, BOLTS AND WASHERS TO BE A MINIMUM GRADE 316 STAINLESS STEEL. COAT THE THREADED SECTIONS OF ALL STAINLESS STEEL BOLTS WITH AN ANTI-SEIZE LUBRICANT. ASSEMBLE VALVES AT LEAST 24 HOURS PRIOR TO IN-SITU INSTALLATION. RE-TIGHTEN AFTER IN-SITU INSTALLATION.
3. GASKET MATERIAL TO COMPLY WITH AS4087 AND IN ACCORDANCE WITH WSA 109.
4. PLACE 20 THICK ASPHALT PREMIX SEAL BETWEEN THE VALVE AND SHROUD.
5. INSTALL VALVE IDENTIFICATION CAP INSIDE ALL VALVE COVERS (SEE DETAIL A).
6. COVER AND SHROUD ARE TO BE INSTALLED USING A SUPPORT FLANGE, SO THAT NO LOADING IS TRANSFERRED ONTO THE VALVE OR PIPE.
7. HINGED COVERS TO CLOSE IN THE DIRECTION OF FALL OF LAND OR DIRECTION OF ADJACENT ROAD LANE TRAFFIC.
8. PAINT TOP OF VALVE COVER WITH GREEN (G16 - AS2700) ROAD MARKING PAINT WITH NON-SLIP ADDITIVE.
9. GATE VALVES FOR USE ON MAINS DN 90 PE OR LARGER SHALL BE RESILIENT SEATED GATE VALVES.
10. RESILIENT SEATED GATE VALVES ARE TO BE CLOCKWISE CLOSING.
11. REFER TO FLOW SYSTEMS SUPPLEMENTARY MANUAL TO WSA FOR LIST OF APPROVED PIPEWORK AND FITTINGS
http://flowsystems.com.au/governance/Land_Housing/Flow_Systems_Supplementary_Manual_to_WSAA.pdf

PE 100 SDR11/PN16 INTERNAL DIAMETERS		
NOMINAL DIAMETER (mm)	PIPE INTERNAL DIAMETER (mm)	PIPELINE VALVING (mm)
50	40	65 R.S.V.
63	51	65 R.S.V.
90	73	80 R.S.V.
125	101	100 R.S.V.
180	145	150 R.S.V.
250	203	200 R.S.V.

NOTE: R.S.V. = RESILIENT SEATED GATE VALVE FLANGED

FITTING SCHEDULE	
ITEM	DESCRIPTION
1	D.I. VALVE COVER
2	CONCRETE OR RECYCLED PLASTIC SURROUND
3	SPINDLE PROTECTION 150 DWV PVC PIPE SN4 (OR 225mm ALTERNATIVE)
4	VALVE SPINDLE EXTENSION (600-900) AS PER VALVE MANUFACTURER.
5	SHROUD SUPPORT FLANGE
6	SPINDLE CAP - TOP OF SPINDLE TO BE 12mm SQ. TO SUIT FERRULE KEY
7	EF TRANSITION COUPLING
8	RESILIENT SEATED GATE VALVE PN 16
9	STUB FLANGE (FOR ELECTROFUSION OR BUTT WELDING)
10	316 STAINLESS STEEL BACKING RING AND BOLTED CONNECTION
11	PE PIPE

NOTE: ALL FITTINGS NEED TO BE AS PER FLOW SYSTEMS SUPPLEMENTARY MANUAL TO WSA - REFER NOTE 11

REV	DATE	DESCRIPTION	BY	APPROVED
2	13/09/16	FORMATTING AND NOTES 8 & 11 AMENDED	NC	NC
1	15/10/15	VALVE CAP LABEL DETAIL AND NOTE 2 AMENDED	CK	NC
SUPERSEDED PSS-1005				

DESIGNED:	CK
DRAWN:	SR
CHECKED:	RS