



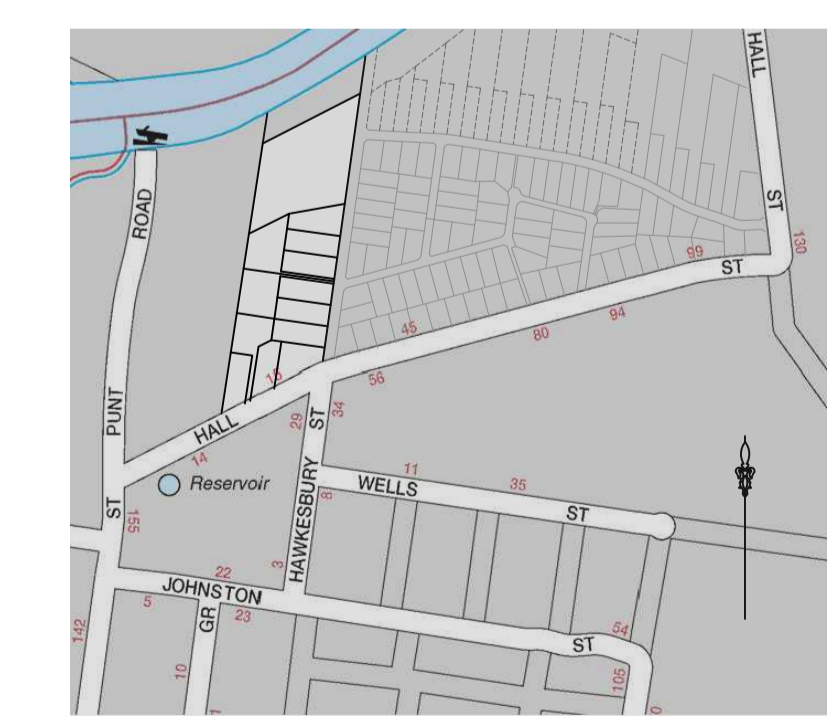
DRAINAGE LIMITS NOT DEFINED FOR LOT 1307. TANK LOCATION TO BE CONFIRMED BY OWNER WITH FLOW SYSTEMS PRIOR TO INSTALLATION TO ENSURE MAXIMUM LOT SERVICABILITY.

SEWER NOTES

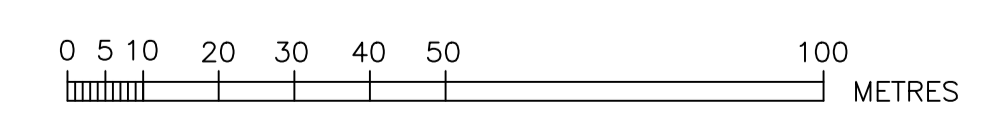
- ALL WORKS SHALL BE CONSTRUCTED IN ACCORDANCE WITH THE DESIGN DRAWINGS, CONSTRUCTION SPECIFICATION, PRESSURE SEWERAGE CODE OF AUSTRALIA WSA 07-2007 VERSION 1.1, FLOW SYSTEMS SUPPLEMENTARY MANUAL TO W.S.A.A., POLYETHYLENE PIPELINE CODE WSA 01-2004 & PRESSURE SYSTEM SOLUTIONS Pty Ltd MASTERPLAN DRAWINGS CURRENT AT THE TIME OF CONSTRUCTION.
- ALL EQUIPMENT, MATERIALS & ACCESSORIES USED IN THIS CONTRACT SHALL BE NEW, SHALL CONFORM WITH THE APPROPRIATE CURRENT AUSTRALIAN STANDARDS & SHALL COMPLY WITH FLOW SYSTEMS REQUIREMENTS.
- ALL SERVICES SHOWN ARE INDICATIVE ONLY. A CURRENT SERVICES SEARCH & SITE CHECK OF ALL EXISTING SERVICES WILL BE REQUIRED PRIOR TO COMMENCEMENT OF ANY WORKS. THE CONTRACTOR IS TO DETERMINE LEVELS & LOCATIONS EXISTING SERVICES IN THE VICINITY OF THE CONSTRUCTION SITE AND ANY CONSTRUCTED STRUCTURES FOR PROPOSED SERVICES, SUCH AS DUCTING FOR WATER OR ELECTRICITY WITHIN THE SUBDIVISION. THE CONTRACTOR MUST ENSURE ALL SERVICES ARE LOCATED BY THE RELEVANT AUTHORITY PRIOR TO COMMENCEMENT OF WORKS.
- PRESSURE SEWER MAINS SHALL BE BLACK POLYETHYLENE (PE100 PN16) WITH A CREAM STRIPE AS PER WSA 02-2007.
- ALL POLYETHYLENE MAINS \leq DN200 SHALL BE JOINED BY ELECTROFUSION TECHNIQUES IN ACCORDANCE WITH THE MANUFACTURERS REQUIREMENTS.
- ALL PIPE BEDDING MATERIAL SHALL COMPLY WITH WSAA PRODUCT SPECIFICATION WSA-PS350 & WSA-PS351.
- ALL BENDS SHALL BE ELECTROFUSION OR BUTTWELD SWEEP BENDS. FABRICATED BENDS SHALL NOT BE USED IN LIEU.
- MINIMUM BENDING RADIUS FOR PN16 PE100 (SDR11) SHALL BE 20 x DN (ie. DN400-R8.0m, DN250-R5.0m, DN200-R4.0m, DN160-R3.2m, DN125-R2.5m, DN90-R1.8m, DN75-R1.5m, DN63-R1.3m, DN50-R1.0m, DN40-R0.8m).
- ALL HOUSE SERVICE LATERALS SHALL BE DN40 (PE100 PN16).
- DURING CONSTRUCTION, ALL OPEN ENDS OF PIPE SHALL BE CAPPED OFF TO PREVENT ENTRY OF FOREIGN MATTER.
- ALL MAINS SHALL BE TESTED IN ACCORDANCE WITH WSA 07-2007 Version 1.1.
- FOR LOTS WITH TANKS IN THE REAR: 1 x 25mm INSTRUMENTATION CONDUIT (ORANGE) AND 1 x 25mm ELECTRICAL CONDUIT (ORANGE) (WITH DRAW WIRES) SHALL BE INSTALLED FROM THE COLLECTION TANK TO WATER METERS. THE CONDUITS SHALL BE LAID IN A COMMON TRENCH WITH THE SEWERAGE AND MAINTAIN A MINIMUM HORIZONTAL CLEARANCE OF 400mm.
- THE CONTRACTOR SHALL PROVIDE PITT TOWN WATER WITH MINIMUM OF 7 DAYS NOTICE OF INTENT TO CONNECT NEW MAINS TO EXISTING INFRASTRUCTURE.
- UPON COMPLETION OF WORKS, ALL SURFACES MUST BE RESTORED AS CLOSE AS POSSIBLE, TO THE CONDITION THAT EXISTED PRIOR TO COMMENCEMENT OF WORK.
- BURIED FITTINGS ARE NOT TO BE BACKFILLED UNTIL W.A.C. DETAILS HAVE BEEN OBTAINED & APPROVAL FOR BACKFILLING GIVEN BY THE HUNTLEE WATER REPRESENTATIVE. THE CONTRACTOR SHALL PROVIDE PROGRESSIVE M.G.A. COORDINATED WORK-AS-CONSTRUCTED INFORMATION REGARDING THE INSTALLATION TO THE PITT TOWN WATER SITE REPRESENTATIVE.
- BOUNDARY KITS SHALL BE 316 STAINLESS STEEL BALL VALVE & SWING CHECK VALVE (CLASS 16), COMPLETE WITH OPEN BASE ACCESS BOX WITH LID. COLLECTION TANK (AS SPECIFIED BY PITT TOWN WATER) SHALL BE INSTALLED WITH BOUNDARY KIT (REFER FLOW SYSTEMS STANDARD DRAWINGS PSS-112-FS & PSS-113-FS). PUMP TO BE INSTALLED BY OTHERS.
- ALL COLLECTION TANKS SHALL BE NOV SIMPLEX InvisIQ 2200L (PSS-VMS 150B PRL).
- ALL MAINS (UP TO THE BOUNDARY KIT) SHALL BE PRESSURE TESTED TO 1600 kPa.
- ALL MAINS SHALL BE FLUSHED WITH WATER TO REMOVE ANY DEBRIS PRIOR TO COMMISSIONING.
- SURFACE IDENTIFICATION MARKERS ARE TO BE PROVIDED TO PITT TOWN WATER REQUIREMENTS.
- ROPE OFF ALL PRESSURE SEWER UNITS & FLUSHING POINTS TO LIMIT DAMAGE DURING CONSTRUCTION.

PIPE SCHEDULE

SIZE	TYPE	CLASS	LENGTH
DN40	PE100	PN16	830



LOCALITY DIAGRAM (NOT TO SCALE)



● DENOTES LATERAL INSTALLED ON EXISTING SEWER

AREAS HATCHED THUS NOT DRAINED.

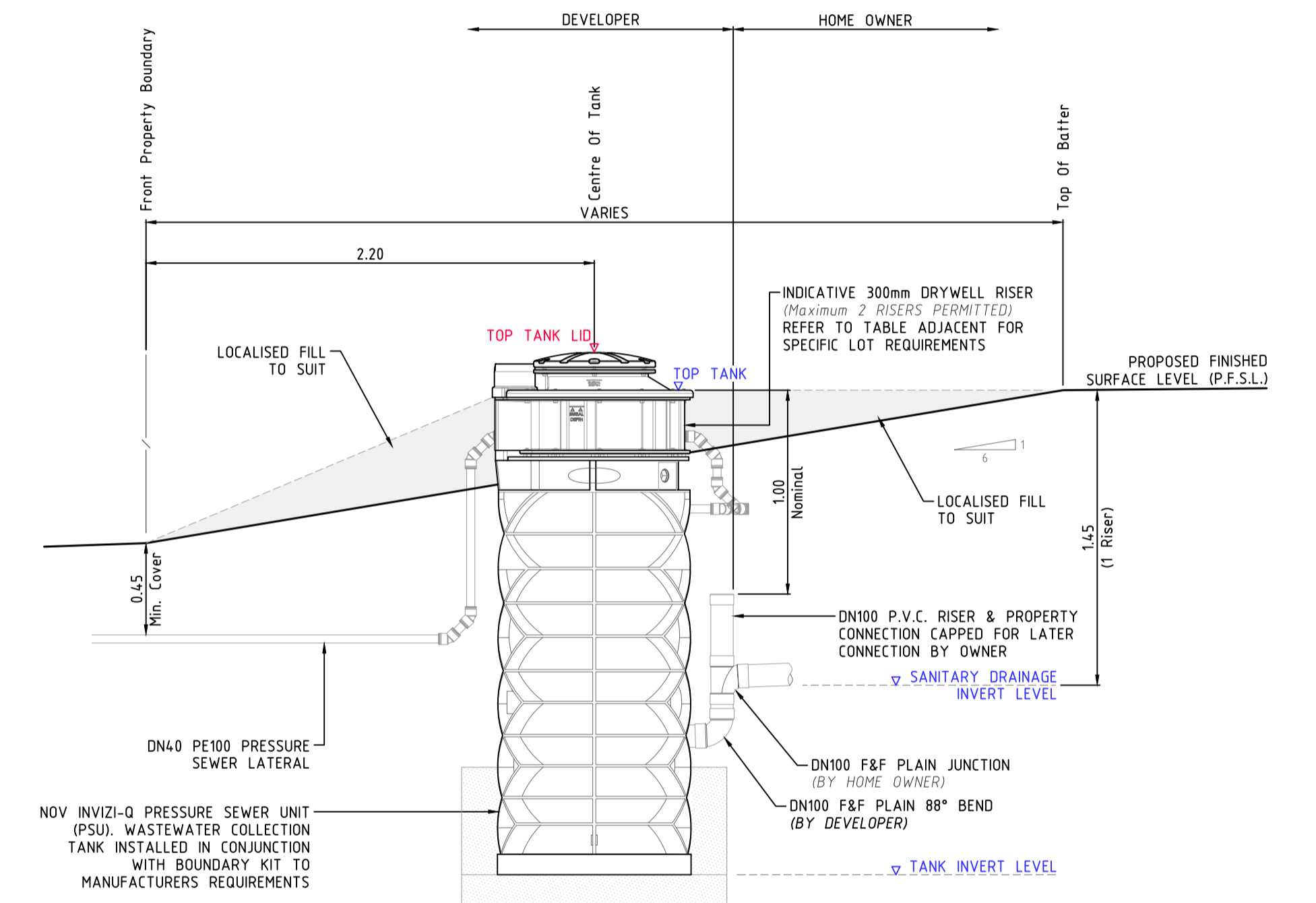
PRESSURE SEWER LEGEND

	STOP VALVE
	STOP VALVE (NORMALLY CLOSED)
	TAPER
	FLUSHING POINT
	TEMPORARY FLUSHING POINT
	PROPERTY BOUNDARY KIT
	COLLECTION TANK (STANDARD)
	COLLECTION TANK (WITH 300mm RISER)
	COLLECTION TANK (WITH 2x300mm RISERS)
	CONTROL/ALARM PANEL
	ELECTRICAL CABLES
	FLOW METER
	AIR VALVE
	PRESSURE MONITORING POINT
	REMOTE MONITORED PRESSURE TRANSDUCER
	VERTICAL DEFLECTION

PRESSURE SEWER COLLECTION TANK LEVEL DETAILS
PITT TOWN DEVELOPMENT - BLIGHTON [STAGE 2]

LOT NUMBER	COLLECTION TANK LOCATION	TANK SIZE	PSSL AT TANK LOCATION	QUANTITY OF DRYWELL RISERS REQUIRED	TOP OF COLLECTION TANK	DESIGN SANITARY DRAINAGE INVERT LEVEL	TOP OF COLLECTION TANK LID*	CALCULATED SANITARY DRAINAGE INVERT LEVEL	WAC v's DESIGN INVERT LEVEL COMPARISON
	[FRONT / REAR]	[900L / 2200L]			[Design R.L.]	[Design R.L.]	[Work-As-Constructed]	[Work-As-Constructed]	[- LOWER / + HIGHER]
1301	REAR	900L	24.41	2	24.59	22.84	24.74	22.80	-0.04
1302	REAR	900L	24.54	1	24.72	23.27	24.89	23.25	-0.02
1303	REAR	900L	24.90		25.08	23.93	25.24	23.90	-0.03
1304	REAR	900L	24.65		24.83	23.68	24.96	23.62	-0.06
1305	REAR	900L	24.65	2	24.83	23.08	25.00	23.06	-0.02
1306	REAR	900L	23.80	2	23.98	22.23	24.14	22.20	-0.03
1307									

* COLLECTION TANK LEVEL PROVIDED TO G.P.S. ACCURACY ONLY. THE BUILDER IS REQUIRED TO CONFIRM DRAINAGE CONSTRAINTS PRIOR TO MAKING CONNECTION TO TANK.

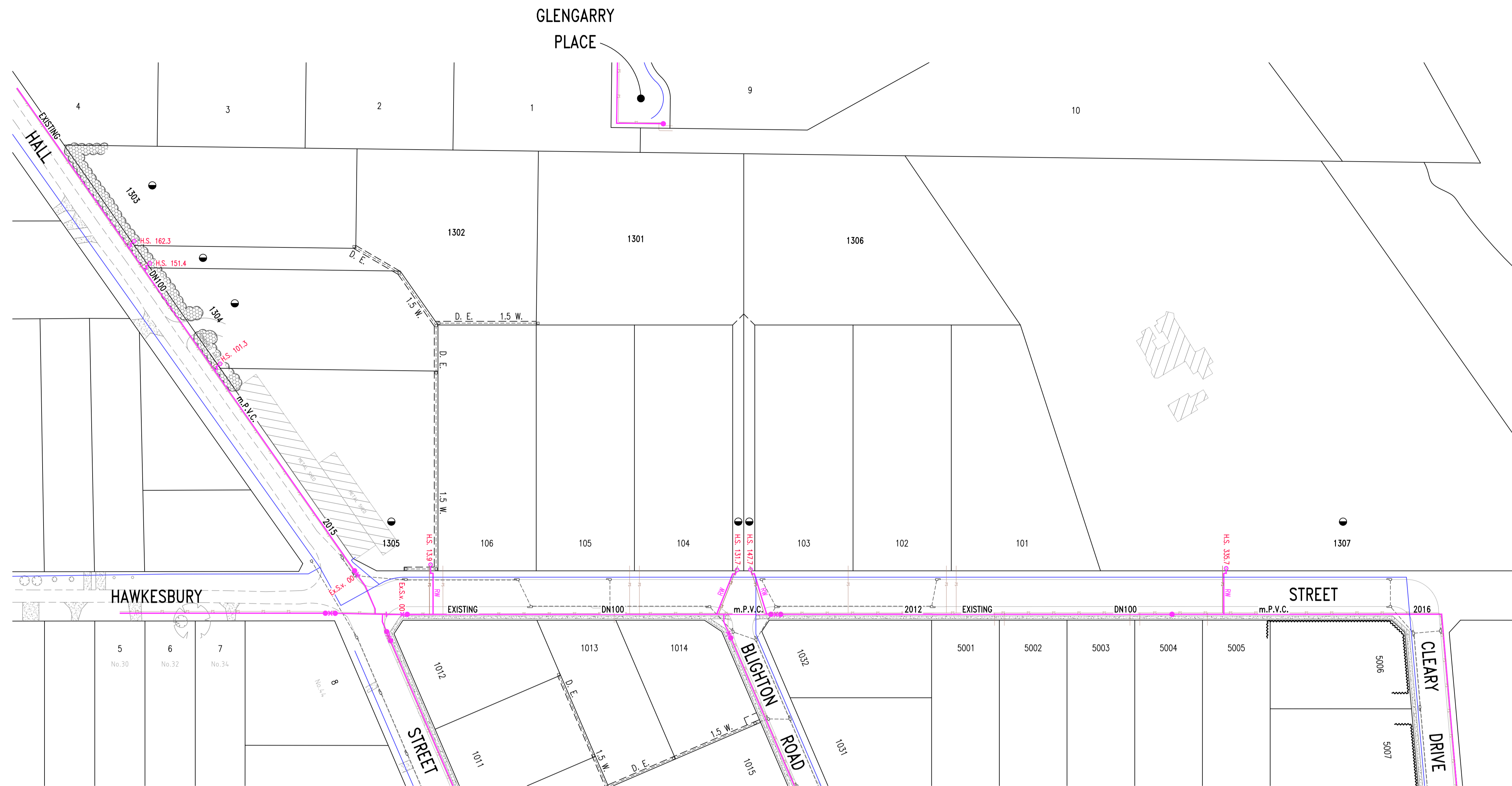


COLLECTION TANK SECTIONAL ELEVATION

SCALE 1:25

COLLECTION TANK NOTES

- DESIGN SURFACE LEVELS WERE ELECTRONICALLY EXTRACTED FROM DIGITAL DATA SUPPLIED BY MCKINLAY MORGAN & ASSOCIATES Pty Ltd. 22/2/16 (8924812D1.dwg).
- DESIGN LEVELS CAN ONLY BE ASSUMED AS CURRENT AT TIME OF EXTRACTION. ALL LEVELS SHALL BE CONFIRMED WITH THE SITE SUPERINTENDENT PRIOR TO INSTALLATION OF TANKS. SHOULD THE PROPOSED FINISHED SURFACE LEVEL (P.F.S.L.) DIFFER FROM DESIGN BY MORE THAN 100mm, THE CONSTRUCTOR SHALL CONTACT THE DESIGNER IMMEDIATELY.
- COLLECTION TANK SETOUT SHALL BE COMPLIANT WITH FSI-1000-FS & FSI-SK03A-FS. COLLECTION TANK INSTALLATION LEVELS DOCUMENTED ADJACENT SHALL SUPERSEDE ANY LEVELS ADVISED ON DRAWING FSI-SK03A-FS.
- R.A.R. ACCEPT NO RESPONSIBILITY FOR INCONSISTENCIES IN EXTRACTED LEVELS RESULTING FROM CHANGES TO THE MODEL (SURFACE LEVEL) INFORMATION POST DATA EXTRACTION DATE.



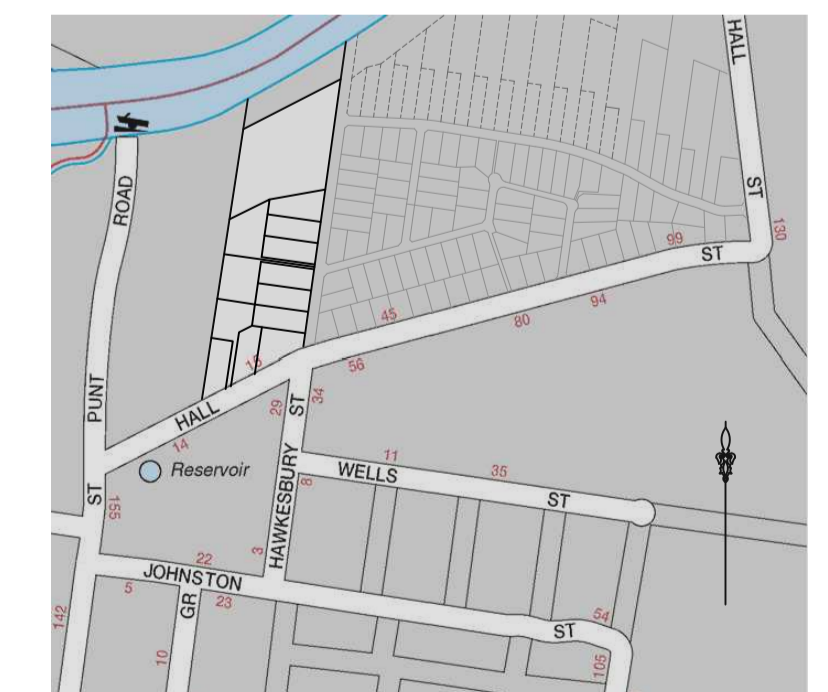
CONSTRUCTION NOTES

● DENOTES PROPERTY SERVICE CONNECTION TO BE INSTALLED INTO EXISTING MAIN

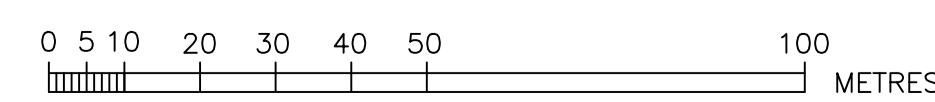
- ALL WORKS SHALL BE CONSTRUCTED IN ACCORDANCE WITH THE DESIGN DRAWINGS, CONSTRUCTION SPECIFICATION, WSA 03-2011-31 (SYDNEY WATER WATER EDITION - 2014), FLOW SYSTEMS SUPPLEMENTARY MANUAL TO W.S.A.A. & PRESSURE SYSTEM SOLUTIONS Pty Ltd MASTERPLAN DRAWINGS CURRENT AT THE TIME OF CONSTRUCTION.
- POTABLE WATER SHALL BE UTILISED FOR FIRE FIGHTING PURPOSES.
- ALL EQUIPMENT, MATERIALS & ACCESSORIES USED IN THIS CONTRACT SHALL BE NEW, SHALL CONFORM WITH THE APPROPRIATE CURRENT AUSTRALIAN STANDARDS & SHALL COMPLY WITH FLOW SYSTEMS REQUIREMENTS.
- ALL SERVICES SHOWN ARE INDICATIVE ONLY. A CURRENT SERVICES SEARCH & SITE CHECK OF ALL EXISTING SERVICES WILL BE REQUIRED PRIOR TO COMMENCEMENT OF ANY WORKS. THE CONSTRUCTOR IS TO DETERMINE LEVELS & LOCATIONS EXISTING SERVICES IN THE VICINITY OF THE CONSTRUCTION SITE AND ANY CONSTRUCTED STRUCTURES FOR PROPOSED SERVICES, SUCH AS DUCTING FOR WATER OR ELECTRICITY WITHIN THE SUBDIVISION. THE CONTRACTOR MUST ENSURE ALL SERVICES ARE LOCATED BY THE RELEVANT AUTHORITY PRIOR TO COMMENCEMENT OF WORKS.
- THE CONSTRUCTOR SHALL VERIFY WITH THE SITE SURVEYOR THE POSITION & LEVEL OF ALL EXISTING & PROPOSED BOUNDARIES PERTINENT TO THE INFRASTRUCTURE INSTALLATIONS.
- ALL PIPE BEDDING MATERIAL SHALL COMPLY WITH WSAA PRODUCT SPECIFICATION PS-350, 368 & 369. GEOTECHNICAL CONDITIONS SHOULD BE ASSESSED DURING CONSTRUCTION BY THE CONTRACTOR IN ASSOCIATION WITH THE PITT TOWN WATER REPRESENTATIVE TO DETERMINE THE NEED TO MODIFY EMBEDMENT/TRENCHFILL TYPE & THE ROAD FOR TRENCH DRAINAGE/BULKHEADS.
- DURING CONSTRUCTION, ALL OPEN ENDS OF PIPES SHALL BE CAPPED OFF TO PREVENT ENTRY OF FOREIGN MATTER.
- LAY DETECTABLE MARKING TAPE OVER ALL MAINS & PROPERTY HOUSE SERVICE LINES AS PER WAT-1854-S & WAT-1855-S (ENSURING A CONTINUOUS ELECTRICAL PATHWAY ALONG THE TRACE WIRE ON EACH SERVICE FROM THE PROPERTY METERS TO & ALONG THE RELEVANT MAIN TO HYDRANTS AND VALVES. MARKER TAPE SHALL BE CONNECTED TO SURFACE VALVES OR HYDRANTS.
- ALL PROPERTY (MAIN TO METER) SERVICE CONNECTIONS SHALL BE IN ACCORDANCE WITH WSA STANDARD DRAWINGS, SYDNEY WATER VERSION FOR DUAL WATER SUPPLY SYSTEMS (A SUPPLEMENT TO WSA03-2002) WAT-1853-S, WAT-1854-S, WAT-1855-S & WAT-1856-S. THE WORKS MUST BE INSTALLED IN ACCORDANCE WITH THE CURRENT SYDNEY WATER (PROPERTY (MAIN TO METER) SERVICE INSTALLATIONS TECHNICAL REQUIREMENTS, NSW CODE OF PRACTICE FOR PLUMBING & DRAINAGE & AS/NZS3500.
SERVICE CONNECTIONS TO PVC MAINS
ALL MATERIALS FOR USE IN PROPERTY SERVICES TO BE IN ACCORDANCE WITH THE N.S.W. CODE OF PRACTICE-PLUMBING & DRAINAGE, AND AS 3500 (MINIMUM PN15), PE80B, PN16. ALL PROPERTY SERVICE PIPES FOR RECYCLED WATER SHALL BE BLACK WITH LILAC (P23) STRIPES (LONGITUDINAL) TO A.S. 2700. WHERE NOMINAL SIZE OF A PIPE IS SPECIFIED, AN EQUIVALENT PIPE SIZE APPROPRIATE TO THE MATERIAL BEING USED TO BE AS SPECIFIED IN A.S. 3500.1, TABLE 11, PE80B, PN16.
- HOUSE SERVICES CONNECTION SHALL BE FLUSHED & LOCKED (BY THE PITT TOWN WATER REPRESENTATIVE) FOLLOWING SUCCESSFUL PRESSURE TESTING.
- ALL MAINS SHALL BE TESTED IN ACCORDANCE WITH WSA 03-2011-3.1.
- ALL MAINS SHALL BE FLUSHED WITH WATER TO REMOVE ANY DEBRIS PRIOR TO COMMISSIONING.
- THE CONSTRUCTOR SHALL PROVIDE PITT TOWN WATER WITH MINIMUM OF 7 DAYS NOTICE OF INTENT TO CONNECT NEW MAINS TO EXISTING INFRASTRUCTURE.
- UPON COMPLETION OF WORKS, ALL SURFACES MUST BE RESTORED AS CLOSE AS POSSIBLE, TO THE CONDITION THAT EXISTED PRIOR TO COMMENCEMENT OF WORK.
- BURIED FITTINGS ARE NOT TO BE BACKFILLED UNTIL W.A.C. DETAILS HAVE BEEN OBTAINED & APPROVAL FOR BACKFILLING GIVEN BY THE PITT TOWN WATER REPRESENTATIVE. THE CONTRACTOR SHALL PROVIDE M.G.A. COORDINATED WORK-AS-CONSTRUCTED INFORMATION REGARDING THE INSTALLATION.
- SURFACE IDENTIFICATION MARKERS ARE TO BE PROVIDED TO PITT TOWN WATER REQUIREMENTS.

RECYCLED WATER LEGEND

	STOP VALVE
	STOP VALVE (BYPASS)
	HYDRANT
	CONTROL VALVE (HYDRANT)
	TAPER
	WATER SERVICE CONNECTION
	FLOW METER
	AIR VALVE
	VERTICAL DEFLECTION
	REMOTE MONITORED PRESSURE TRANSDUCER



LOCALITY DIAGRAM
(NOT TO SCALE)



ROSE ATKINS RIMMER (Infrastructure) Pty. Ltd.
RAR WATER RELATED INFRASTRUCTURE DESIGN AND MANAGEMENT
 142 SUNNYHOLT ROAD, BLACKTOWN
 P.O. BOX 6745, BLACKTOWN N.S.W. 2148
 PH: (02) 9853 0200 FAX: (02) 9671 7399



RECYCLED WATER DETAIL PLAN

DRAWN: K.GAO	DESIGNED: K.GAO	REVIEWED: V.VIKSNE	VERIFIED: D.SHEATHER
SCALE: 1:1000	DATE: -	W.A.C. REFERENCE: 67 H7-H8	DATE OF ISSUE: 17/10/2019

SHEET 3 OF 3

VERSION: WAC
 JOB No. 10/23866/2