

**LEGEND**

	PVC-M POTABLE WATER RETICULATION
	POTABLE WATER SERVICE
	DN200 PVC-M POTABLE WATER TRANSFER MAIN
	RW RECYCLED WATER RETICULATION
	RWS RECYCLED WATER SERVICE
	DN250 PVC-M RECYCLED WATER TRANSFER MAIN
	SP PRESSURE SEWER RETICULATION
	PSM PRESSURE SEWER MAIN
	T TELSTRA
	E UNDERGROUND POWER
	S/W STORMWATER PIPEWORK
	STOP VALVE
	HYDRANT
	HYDRANT BEND/FLUSHING HYDRANT
	SERVICE CONNECTION
	LAY WATER MAIN UNDER STORMWATER PIPE (300mm MIN. VERTICAL CLEARANCE) - REFER TO WAT-1255-H
	LAY WATER MAIN OVER STORMWATER PIPE (300mm MIN. VERTICAL CLEARANCE) - REFER TO WAT-1255-H
	LIMIT OF SUBDIVISION WORKS

JOINS DRG-004  
**PLAN**  
SCALE 1:250

- POTABLE WATER SERVICE CONNECTIONS**  
TOTAL 41 CONNECTIONS
- SINGLE SERVICES IN ACCORDANCE WITH WAT-1106-V
    - 2 x SHORT SIDE
    - 5 x LONG SIDE
  - SPLIT SERVICES IN ACCORDANCE WITH WAT-1107-V
    - 5 x SHORT SIDE
    - 12 x LONG SIDE

**POTABLE WATER PIPE DATA**

PIPE SIZE (mm)	PIPE MATERIAL	TOTAL LENGTH (m)
DN200	PVC-M PN16	334
DN100	PVC-M PN16	794

- NOTES:**
- FOR RECYCLED WATER PIPEWORK DETAIL PLANS REFER TO DRGS-010 TO 013.
  - FOR PRESSURE SEWER PIPEWORK DETAIL PLANS REFER TO DRGS-016 TO 019.
  - FOR TYPICAL SERVICE CONNECTION DETAILS REFER TO DRG-024.

**WORK-AS-CONSTRUCTED**

REV.	DATE	AMENDMENT	DRAWN	CHECK	DESIGN	VERIFY	SCALES
A	11.11.2014	INITIAL DRAFT	J.N.	L.G.	J.N.	L.G.	
B	07.01.2015	AMENDED ISSUE	J.N.	L.G.	J.N.	L.G.	
C	21.01.2015	AMENDED ISSUE	J.N.	L.G.	J.N.	L.G.	
O	10.02.2015	CONSTRUCTION ISSUE	J.N.	L.G.	J.N.	L.G.	
1	17.02.2015	APPROVED FOR CONSTRUCTION	J.N.	L.G.	J.N.	L.G.	
2	07.04.2015	AMENDED CONSTRUCTION ISSUE	J.N.	L.G.	J.N.	L.G.	
WAC	26.10.2015	WORK AS CONSTRUCTED - RAR	J.N.	L.G.	J.N.	L.G.	

DESIGN FILE: N:\

Plotted By: adamarmishow Plot Date: 22/01/16 - 13:09 Cad File: C:\Users\adamarmishow\appdata\local\temp\AcPublish\_4704\20-23647 1G & 1H PW WAC.dwg

ALL DIMENSIONS ARE IN METRES. DO NOT SCALE

Hunter Office  
Unit 7/335 Hillsborough Rd  
Warners Bay N.S.W. 2282  
Phone: (02) 4978 5100  
Fax: (02) 4978 5199  
email: hunter@adwjohnson.com.au  
www.adwjohnson.com.au  
ABN 62 129 445 398

CLIENT

JOHNSON PROPERTY GROUP

PROPERTY DESCRIPTION

PROPOSED SUBDIVISION  
STAGES 1G & 1H WATAGAN PARK  
McCULLOUGH STREET, COORANBONG  
DA/573/2014

SURVEYED ADW Johnson DATUM A.H.D.

PROJECT	POTABLE WATER, RECYCLED WATER AND PRESSURE SEWER RETICULATION		
PLAN TITLE	POTABLE WATER DETAIL PLAN SHEET 2		
PROJECT No.	DISCIPLINE	NUMBER	REV.
239078(1G & 1H)	WAT	005	WAC

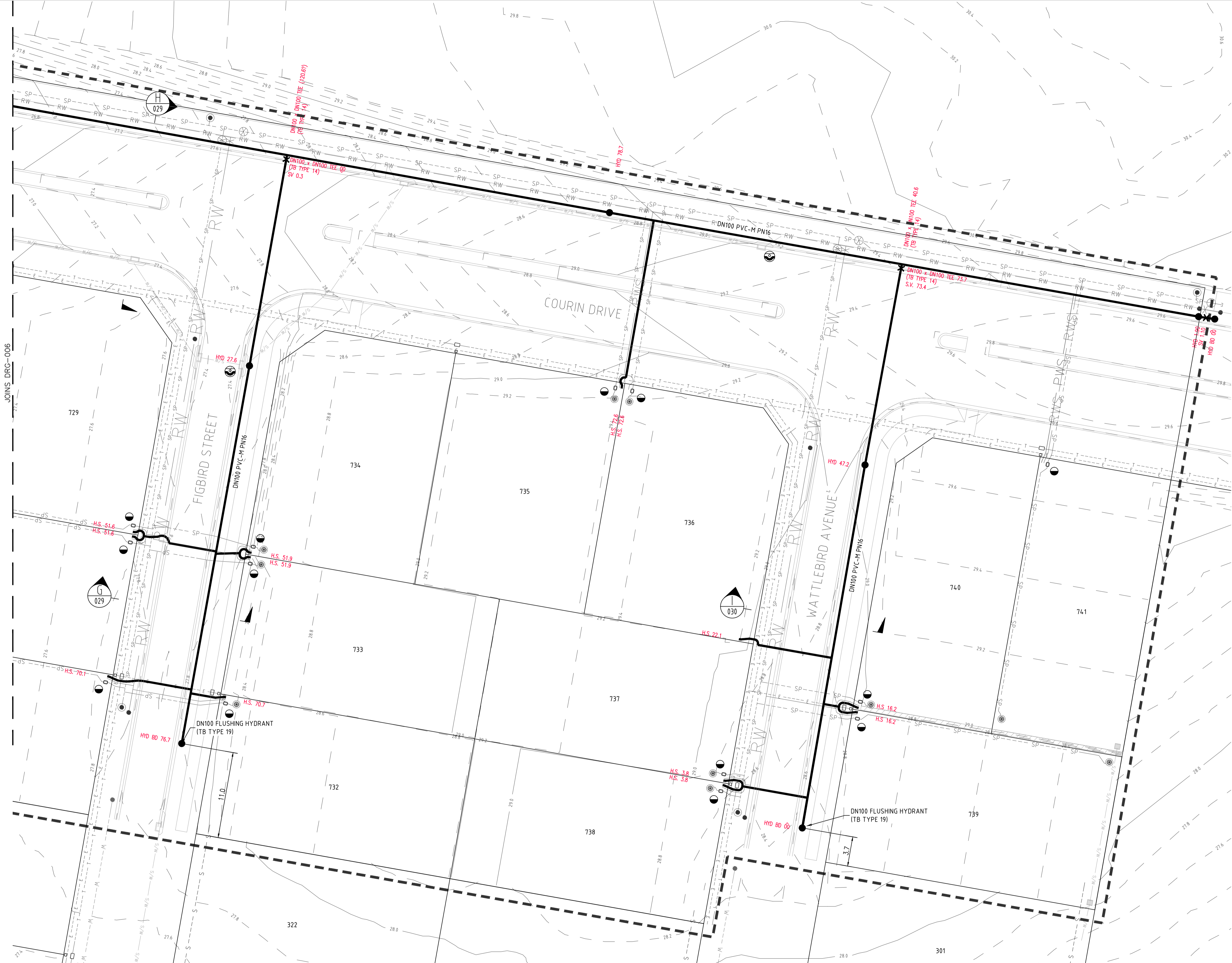
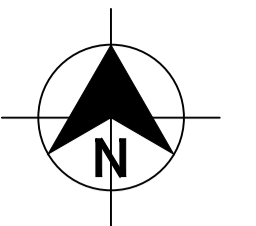






20-23647 1G & 1H PW WAC

100mm AT FULL SIZE



POTABLE WATER PIPE DATA		
PIPE SIZE (mm)	PIPE MATERIAL	TOTAL LENGTH (m)
DN200	PVC-M PN16	334
DN100	PVC-M PN16	794

- POTABLE WATER SERVICE CONNECTIONS  
 TOTAL 41 CONNECTIONS
- SINGLE SERVICES IN ACCORDANCE WITH WAT-1106-V
    - 2 x SHORT SIDE
    - 5 x LONG SIDE
  - SPLIT SERVICES IN ACCORDANCE WITH WAT-1107-V
    - 5 x SHORT SIDE
    - 12 x LONG SIDE

- NOTES:
1. FOR RECYCLED WATER PIPEWORK DETAIL PLANS REFER TO DRGS-010 TO 013.
  2. FOR PRESSURE SEWER PIPEWORK DETAIL PLANS REFER TO DRGS-016 TO 019.
  3. FOR TYPICAL SERVICE CONNECTION DETAILS REFER TO DRG-024.

LEGEND

	PVC-M POTABLE WATER RETICULATION
	POTABLE WATER SERVICE
	PVC-M RECYCLED WATER RETICULATION
	RECYCLED WATER SERVICE
	PE PRESSURE SEWER RETICULATION
	EXISTING WATER PIPEWORK (HUNTER WATER)
	EXISTING SEWER PIPEWORK (HUNTER WATER)
	TELSTRA
	UNDERGROUND POWER
	STORMWATER PIPEWORK
	STOP VALVE
	HYDRANT
	FLUSHING HYDRANT
	SERVICE CONNECTION
	LAY WATER MAIN UNDER STORMWATER PIPE (300mm MIN. VERTICAL CLEARANCE) - REFER TO WAT-1255-H
	LAY WATER MAIN OVER STORMWATER PIPE (300mm MIN. VERTICAL CLEARANCE) - REFER TO WAT-1255-H
	LIMIT OF SUBDIVISION WORKS

PLAN SCALE 1:250

REV.	DATE	AMENDMENT	DRAWN	CHECK	DESIGN	VERIFY	SCALES
A	11.11.2014	INITIAL DRAFT	J.N.	L.G.	J.N.	L.G.	 A1 / A3 1:250 / 1:500
B	07.01.2015	AMENDED ISSUE	J.N.	L.G.	J.N.	L.G.	
C	21.01.2015	AMENDED ISSUE	J.N.	L.G.	J.N.	L.G.	
O	10.02.2015	CONSTRUCTION ISSUE	J.N.	L.G.	J.N.	L.C.	
1	17.02.2015	APPROVED FOR CONSTRUCTION	J.N.	L.G.	J.N.	L.C.	
2	07.04.2015	AMENDED CONSTRUCTION ISSUE	J.N.	L.G.	J.N.	L.C.	
WAC	26.10.2015	WORK AS CONSTRUCTED - RAR	A.S.A.	L.G.	J.N.	B.K.	

ALL DIMENSIONS ARE IN METRES. DO NOT SCALE

Hunter Office  
 Unit 7/335 Hillsborough Rd  
 Warners Bay N.S.W. 2282  
 Phone: (02) 4978 5100  
 Fax: (02) 4978 5199  
 email: hunter@adwjohnson.com.au  
 www.adwjohnson.com.au  
 ABN 62 129 445 398

CLIENT

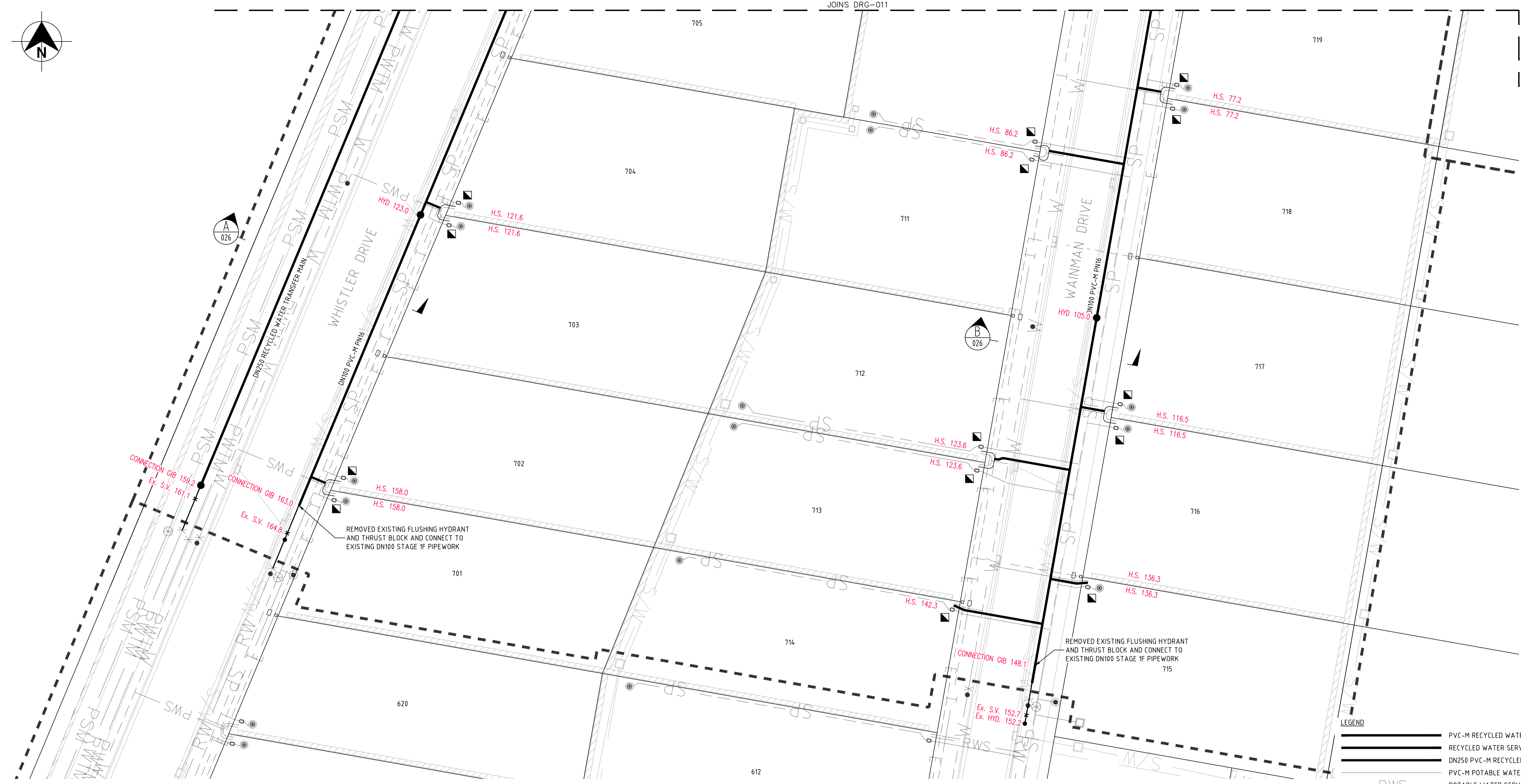
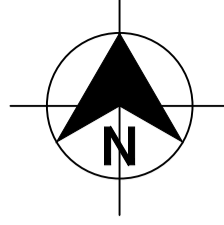
PROPERTY DESCRIPTION

PROPOSED SUBDIVISION  
 STAGES 1G & 1H WATAGAN PARK  
 McCULLOUGH STREET, COORANBONG  
 DA/573/2014

SURVEYED ADW Johnson      DATUM A.H.D.

PROJECT	POTABLE WATER, RECYCLED WATER AND PRESSURE SEWER RETICULATION		
PLAN TITLE	POTABLE WATER DETAIL PLAN SHEET 4		
PROJECT No.	DISCIPLINE	NUMBER	REV.
239078(1G & 1H)	WAT	007	WAC





REMOVED EXISTING FLUSHING HYDRANT AND THRUST BLOCK AND CONNECT TO EXISTING DN100 STAGE 1F PIPEWORK

REMOVED EXISTING FLUSHING HYDRANT AND THRUST BLOCK AND CONNECT TO EXISTING DN100 STAGE 1F PIPEWORK

PLAN  
SCALE 1:250

- RECYCLED WATER SERVICE CONNECTIONS**
- TOTAL 41 CONNECTIONS
  - SINGLE SERVICES IN ACCORDANCE WITH WAT-1106-V
    - 2 x SHORT SIDE
    - 5 x LONG SIDE
  - SPLIT SERVICES IN ACCORDANCE WITH WAT-1107-V
    - 9 x SHORT SIDE
    - 8 x LONG SIDE

RECYCLED WATER PIPE DATA		
PIPE SIZE (mm)	PIPE MATERIAL	TOTAL LENGTH (m)
DN250	PVC-M PN16	167
DN100	PVC-M PN16	975

- NOTES:**
- FOR POTABLE WATER PIPEWORK DETAIL PLANS REFER TO DRGS-004 TO 007.
  - FOR PRESSURE SEWER PIPEWORK DETAIL PLANS REFER TO DRGS-016 TO 019.
  - FOR TYPICAL SERVICE CONNECTION DETAILS REFER TO DRG-024.

**LEGEND**

- PVC-M RECYCLED WATER RETICULATION
- RECYCLED WATER SERVICE
- DN250 PVC-M RECYCLED WATER TRANSFER MAIN
- PVC-M POTABLE WATER RETICULATION
- POTABLE WATER SERVICE
- DN200 PVC-M POTABLE WATER TRANSFER MAIN
- PE PRESSURE SEWER RETICULATION
- PE SEWER PRESSURE MAIN
- TELSTRA
- UNDERGROUND POWER
- STORMWATER PIPEWORK
- STOP VALVE
- HYDRANT
- SERVICE CONNECTION
- LAY WATER MAIN UNDER STORMWATER PIPE (300mm MIN. VERTICAL CLEARANCE) - REFER TO WAT-1255-H
- LAY WATER MAIN OVER STORMWATER PIPE (300mm MIN. VERTICAL CLEARANCE) - REFER TO WAT-1255-H
- LIMIT OF SUBDIVISION WORKS

**WORK-AS-CONSTRUCTED**

REV.	DATE	AMENDMENT	DRAWN	CHECK	DESIGN	VERIFY	SCALES
A	11.11.2014	INITIAL DRAFT	J.N.	L.G.	J.N.	L.G.	
B	07.01.2015	AMENDED ISSUE	J.N.	L.G.	J.N.	L.G.	
C	21.01.2015	AMENDED ISSUE	J.N.	L.G.	J.N.	L.G.	
0	10.02.2015	CONSTRUCTION ISSUE	J.N.	L.G.	J.N.	L.G.	
1	17.02.2015	APPROVED FOR CONSTRUCTION	J.N.	L.G.	J.N.	L.G.	
2	07.04.2015	AMENDED CONSTRUCTION ISSUE	J.N.	L.G.	J.N.	L.G.	
WAC	30.10.2015	WORK AS CONSTRUCTED - RAR	A.S.A.		J.N.	B.K.	

ALL DIMENSIONS ARE IN METRES. DO NOT SCALE

**adw Johnson**

Hunter Office  
Unit 7/335 Hillsborough Rd  
Warners Bay N.S.W. 2282  
Phone: (02) 4978 5100  
Fax: (02) 4978 5199  
email: hunter@adwjohnson.com.au  
www.adwjohnson.com.au  
ABN 62 129 445 398

**JOHNSON PROPERTY GROUP**

PROPERTY DESCRIPTION

PROPOSED SUBDIVISION  
STAGES 1G & 1H WATAGAN PARK  
McCULLOUGH STREET, COORANBONG  
DA/573/2014

SURVEYED: ADW Johnson      DATUM: A.H.D.

PROJECT: POTABLE WATER, RECYCLED WATER AND PRESSURE SEWER RETICULATION

PLAN TITLE: RECYCLED WATER DETAIL PLAN SHEET 1

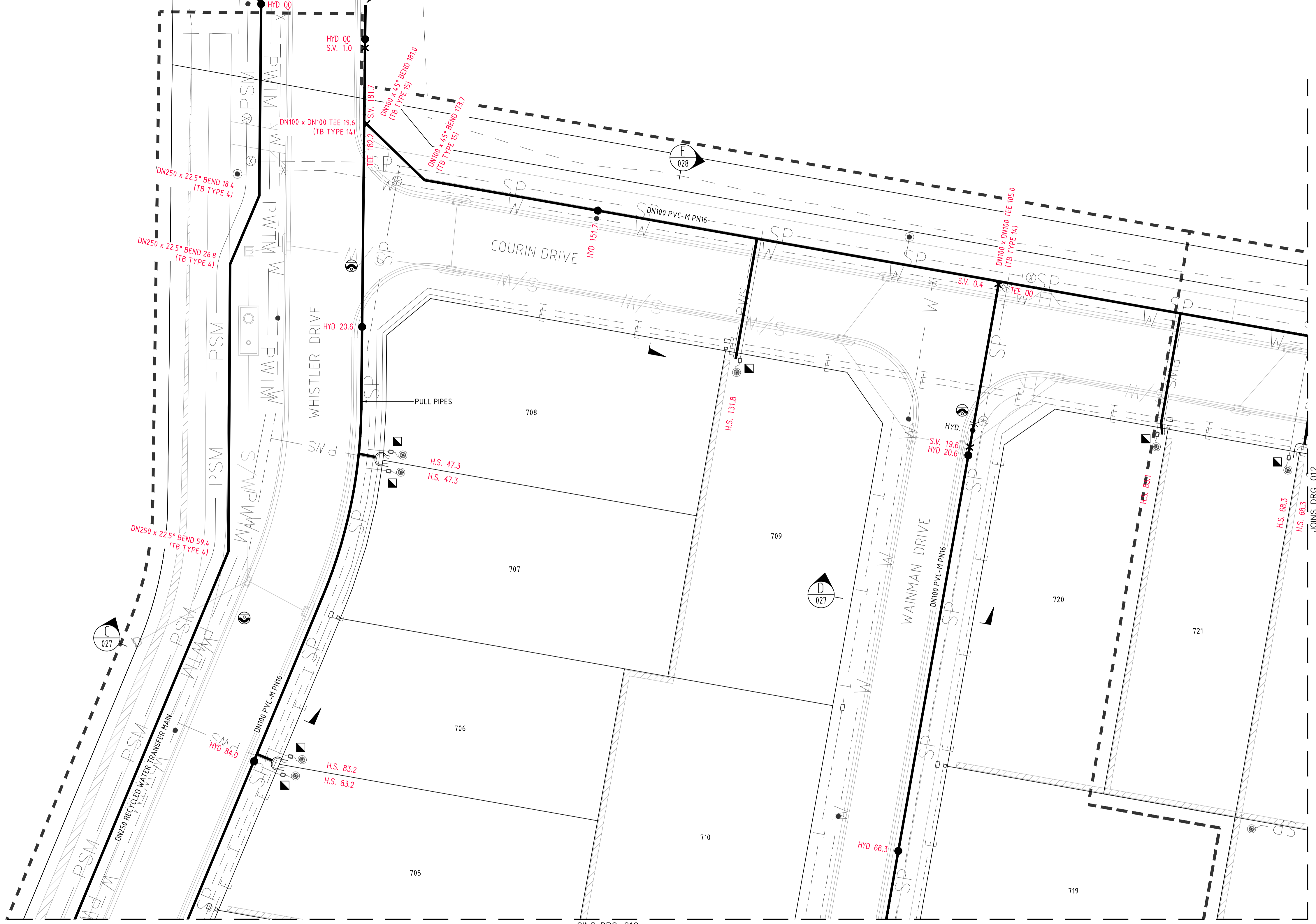
PROJECT No. 239078(1G & 1H)      DISCIPLINE: WAT      NUMBER: 010      REV. WAC





EXTEND DN250 PIPEWORK 1.0m BEYOND LIMIT OF SUBDIVISION WORKS AND INSTALL FLUSHING HYDRANT (TB TYPE 6)

EXTEND DN100 PIPEWORK 1.0m BEYOND LIMIT OF SUBDIVISION WORKS AND INSTALL FLUSHING HYDRANT (TB TYPE 19)



**LEGEND**

	PVC-M RECYCLED WATER RETICULATION
	RECYCLED WATER SERVICE
	DN250 PVC-M RECYCLED WATER TRANSFER MAIN
	PVC-M POTABLE WATER RETICULATION
	POTABLE WATER SERVICE
	DN200 PVC-M POTABLE WATER TRANSFER MAIN
	PE PRESSURE SEWER RETICULATION
	PE SEWER PRESSURE MAIN
	TELSTRA
	UNDERGROUND POWER
	STORMWATER PIPEWORK
	STOP VALVE
	HYDRANT
	SERVICE CONNECTION
	LAY WATER MAIN UNDER STORMWATER PIPE (300mm MIN. VERTICAL CLEARANCE) - REFER TO WAT-1255-H
	LAY WATER MAIN OVER STORMWATER PIPE (300mm MIN. VERTICAL CLEARANCE) - REFER TO WAT-1255-H
	LIMIT OF SUBDIVISION WORKS

JOINS DRG-010  
**PLAN**  
SCALE 1:250

- RECYCLED WATER SERVICE CONNECTIONS**
- TOTAL 41 CONNECTIONS
- SINGLE SERVICES IN ACCORDANCE WITH WAT-1106-V
    - 2 x SHORT SIDE
    - 5 x LONG SIDE
  - SPLIT SERVICES IN ACCORDANCE WITH WAT-1107-V
    - 9 x SHORT SIDE
    - 8 x LONG SIDE

RECYCLED WATER PIPE DATA		
PIPE SIZE (mm)	PIPE MATERIAL	TOTAL LENGTH (m)
DN250	PVC-M PN16	167
DN100	PVC-M PN16	975

- NOTES:**
- FOR POTABLE WATER PIPEWORK DETAIL PLANS REFER TO DRGS-004 TO 007.
  - FOR PRESSURE SEWER PIPEWORK DETAIL PLANS REFER TO DRGS-016 TO 019.
  - FOR TYPICAL SERVICE CONNECTION DETAILS REFER TO DRG-024.

**WORK-AS-CONSTRUCTED**

REV.	DATE	AMENDMENT	DRAWN	CHECK	DESIGN	VERIFY	SCALES
A	11.11.2014	INITIAL DRAFT	J.N.	L.G.	J.N.	L.G.	
B	07.01.2015	AMENDED ISSUE	J.N.	L.G.	J.N.	L.G.	
C	21.01.2015	AMENDED ISSUE	J.N.	L.G.	J.N.	L.G.	
0	10.02.2015	CONSTRUCTION ISSUE	J.N.	L.G.	J.N.	L.G.	
1	17.02.2015	APPROVED FOR CONSTRUCTION	J.N.	L.G.	J.N.	L.G.	
2	07.04.2015	AMENDED CONSTRUCTION ISSUE	J.N.	L.G.	J.N.	L.G.	
WAC	30.10.2015	WORK AS CONSTRUCTED - RAR	A.S.A.			B.K.	

**adw Johnson**

Hunter Office  
Unit 7/335 Hillsborough Rd  
Warners Bay N.S.W. 2282  
Phone: (02) 4978 5100  
Fax: (02) 4978 5199  
email: hunter@adwjohnson.com.au  
www.adwjohnson.com.au  
ABN 62 129 445 398

CLIENT

**JOHNSON PROPERTY GROUP**

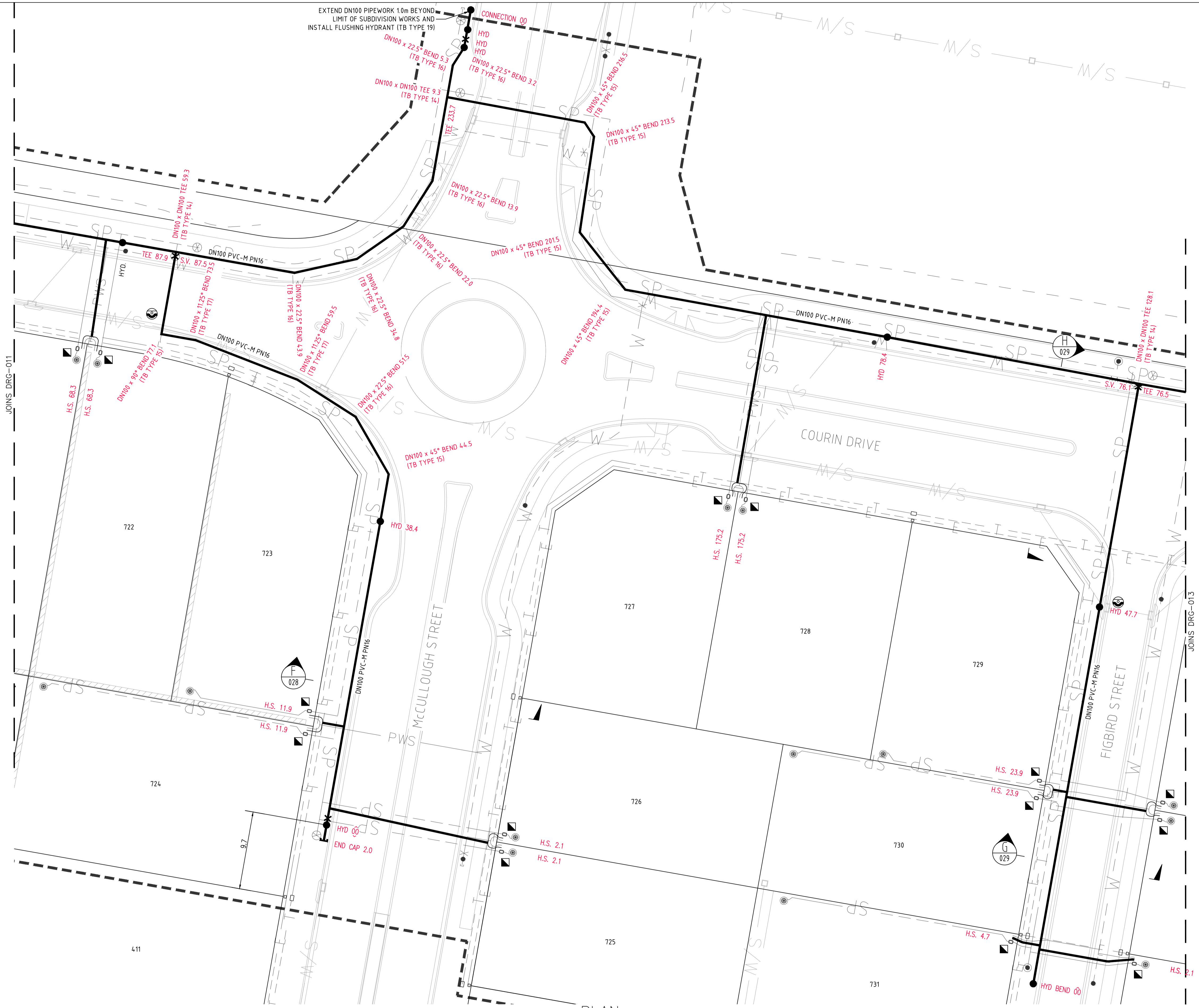
PROPERTY DESCRIPTION

PROPOSED SUBDIVISION  
STAGES 1G & 1H WATAGAN PARK  
McCULLOUGH STREET, COORANBONG  
DA/573/2014

SURVEYED: ADW Johnson      DATUM: A.H.D.

PROJECT	POTABLE WATER, RECYCLED WATER AND PRESSURE SEWER RETICULATION		
PLAN TITLE	RECYCLED WATER DETAIL PLAN SHEET 2		
PROJECT No.	DISCIPLINE	NUMBER	REV.
239078(1G & 1H)	- WAT -	011	WAC





RECYCLED WATER PIPE DATA		
PIPE SIZE (mm)	PIPE MATERIAL	TOTAL LENGTH (m)
DN250	PVC-M PN16	167
DN100	PVC-M PN16	975

- RECYCLED WATER SERVICE CONNECTIONS  
 TOTAL 41 CONNECTIONS  
 • SINGLE SERVICES IN ACCORDANCE WITH WAT-1106-V  
 - 2 x SHORT SIDE  
 - 5 x LONG SIDE  
 • SPLIT SERVICES IN ACCORDANCE WITH WAT-1107-V  
 - 9 x SHORT SIDE  
 - 8 x LONG SIDE

- NOTES:  
 1. FOR POTABLE WATER PIPEWORK DETAIL PLANS REFER TO DRGS-004 TO 007.  
 2. FOR PRESSURE SEWER PIPEWORK DETAIL PLANS REFER TO DRGS-016 TO 019.  
 3. FOR TYPICAL SERVICE CONNECTION DETAILS REFER TO DRG-024.

LEGEND

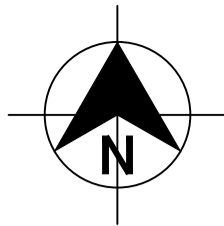
	PVC-M RECYCLED WATER RETICULATION
	RECYCLED WATER SERVICE
	PVC-M POTABLE WATER RETICULATION
	POTABLE WATER SERVICE
	PE PRESSURE SEWER RETICULATION
	TELSTRA
	UNDERGROUND POWER
	STORMWATER PIPEWORK
	STOP VALVE
	HYDRANT
	SERVICE CONNECTION
	LAY WATER MAIN UNDER STORMWATER PIPE (300mm MIN. VERTICAL CLEARANCE) - REFER TO WAT-1255-H
	LAY WATER MAIN OVER STORMWATER PIPE (300mm MIN. VERTICAL CLEARANCE) - REFER TO WAT-1255-H
	LIMIT OF SUBDIVISION WORKS

PLAN SCALE 1:250

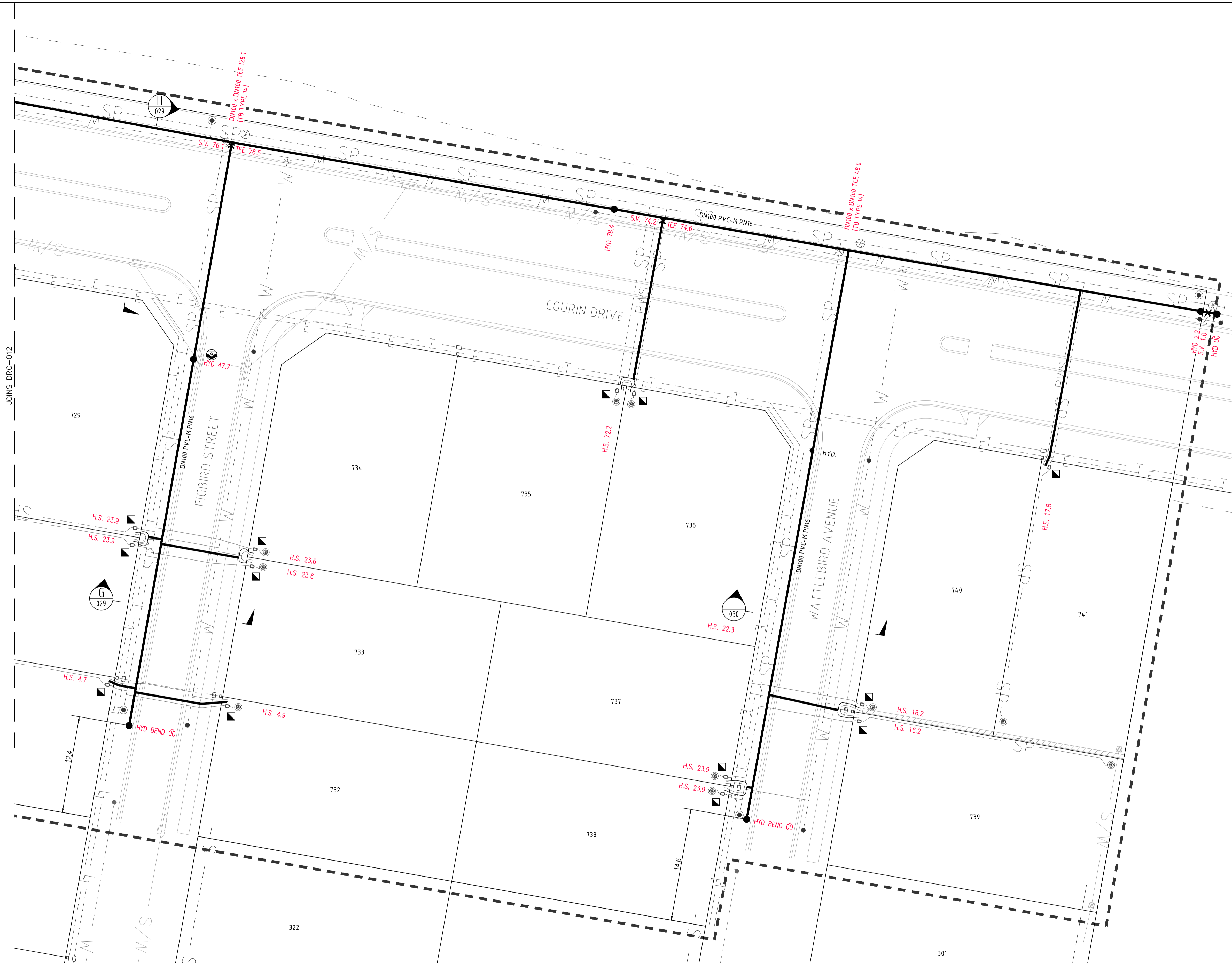
WORK-AS-CONSTRUCTED

<table border="1"> <thead> <tr> <th>REV.</th> <th>DATE</th> <th>AMENDMENT</th> <th>DRAWN</th> <th>CHECK</th> <th>DESIGN</th> <th>VERIFY</th> </tr> </thead> <tbody> <tr> <td>A</td> <td>11.11.2014</td> <td>INITIAL DRAFT</td> <td>J.N.</td> <td>L.G.</td> <td>J.N.</td> <td>L.G.</td> </tr> <tr> <td>B</td> <td>07.01.2015</td> <td>AMENDED ISSUE</td> <td>J.N.</td> <td>L.G.</td> <td>J.N.</td> <td>L.G.</td> </tr> <tr> <td>C</td> <td>21.01.2015</td> <td>AMENDED ISSUE</td> <td>J.N.</td> <td>L.G.</td> <td>J.N.</td> <td>L.G.</td> </tr> <tr> <td>0</td> <td>10.02.2015</td> <td>CONSTRUCTION ISSUE</td> <td>J.N.</td> <td>L.G.</td> <td>J.N.</td> <td>L.G.</td> </tr> <tr> <td>1</td> <td>17.02.2015</td> <td>APPROVED FOR CONSTRUCTION</td> <td>J.N.</td> <td>L.G.</td> <td>J.N.</td> <td>L.G.</td> </tr> <tr> <td>2</td> <td>07.04.2015</td> <td>AMENDED CONSTRUCTION ISSUE</td> <td>J.N.</td> <td>L.G.</td> <td>J.N.</td> <td>L.G.</td> </tr> <tr> <td>WAC</td> <td>30.10.2015</td> <td>WORK AS CONSTRUCTED - RAR</td> <td>A.S.A.</td> <td></td> <td>J.N.</td> <td>B.K.</td> </tr> </tbody> </table>	REV.	DATE	AMENDMENT	DRAWN	CHECK	DESIGN	VERIFY	A	11.11.2014	INITIAL DRAFT	J.N.	L.G.	J.N.	L.G.	B	07.01.2015	AMENDED ISSUE	J.N.	L.G.	J.N.	L.G.	C	21.01.2015	AMENDED ISSUE	J.N.	L.G.	J.N.	L.G.	0	10.02.2015	CONSTRUCTION ISSUE	J.N.	L.G.	J.N.	L.G.	1	17.02.2015	APPROVED FOR CONSTRUCTION	J.N.	L.G.	J.N.	L.G.	2	07.04.2015	AMENDED CONSTRUCTION ISSUE	J.N.	L.G.	J.N.	L.G.	WAC	30.10.2015	WORK AS CONSTRUCTED - RAR	A.S.A.		J.N.	B.K.	<p>Hunter Office                  Unit 7/335 Hillsborough Rd                  Warners Bay N.S.W. 2282                  Phone: (02) 4978 5100                  Fax: (02) 4978 5199                  email: hunter@adwjohnson.com.au                  www.adwjohnson.com.au                  ABN 62 129 445 398</p>	<p>CLIENT  </p>	<p>PROPERTY DESCRIPTION                  PROPOSED SUBDIVISION                  STAGES 1G &amp; 1H WATANG PARK                  McCULLOUGH STREET, COORANBONG                  DA/573/2014</p>	<p>PROJECT POTABLE WATER, RECYCLED WATER AND PRESSURE SEWER RETICULATION</p>	<p>PROJECT No. 239078(1G &amp; 1H) DISCIPLINE - WAT - NUMBER 012 REV. WAC</p>
	REV.	DATE	AMENDMENT	DRAWN	CHECK	DESIGN	VERIFY																																																						
A	11.11.2014	INITIAL DRAFT	J.N.	L.G.	J.N.	L.G.																																																							
B	07.01.2015	AMENDED ISSUE	J.N.	L.G.	J.N.	L.G.																																																							
C	21.01.2015	AMENDED ISSUE	J.N.	L.G.	J.N.	L.G.																																																							
0	10.02.2015	CONSTRUCTION ISSUE	J.N.	L.G.	J.N.	L.G.																																																							
1	17.02.2015	APPROVED FOR CONSTRUCTION	J.N.	L.G.	J.N.	L.G.																																																							
2	07.04.2015	AMENDED CONSTRUCTION ISSUE	J.N.	L.G.	J.N.	L.G.																																																							
WAC	30.10.2015	WORK AS CONSTRUCTED - RAR	A.S.A.		J.N.	B.K.																																																							
<p>DESIGN FILE: N:\</p>	<p>PLANNING TITLE                  RECYCLED WATER DETAIL PLAN SHEET 3</p>	<p>SURVEYED ADW Johnson DATUM A.H.D.</p>																																																											





DIAL 1100  
BEFORE YOU DIG



RECYCLED WATER PIPE DATA		
PIPE SIZE (mm)	PIPE MATERIAL	TOTAL LENGTH (m)
DN250	PVC-M PN16	167
DN100	PVC-M PN16	975

- RECYCLED WATER SERVICE CONNECTIONS
- TOTAL 41 CONNECTIONS
- SINGLE SERVICES IN ACCORDANCE WITH WAT-1106-V
    - 2 x SHORT SIDE
    - 5 x LONG SIDE
  - SPLIT SERVICES IN ACCORDANCE WITH WAT-1107-V
    - 9 x SHORT SIDE
    - 8 x LONG SIDE

- NOTES:
- FOR POTABLE WATER PIPEWORK DETAIL PLANS REFER TO DRGS-004 TO 007.
  - FOR PRESSURE SEWER PIPEWORK DETAIL PLANS REFER TO DRGS-016 TO 019.
  - FOR TYPICAL SERVICE CONNECTION DETAILS REFER TO DRG-024.

LEGEND

	PVC-M RECYCLED WATER RETICULATION
	RECYCLED WATER SERVICE
	PVC-M POTABLE WATER RETICULATION
	POTABLE WATER SERVICE
	PE PRESSURE SEWER RETICULATION
	EXISTING WATER PIPEWORK (HUNTER WATER)
	EXISTING SEWER PIPEWORK (HUNTER WATER)
	TELSTRA
	UNDERGROUND POWER
	STORMWATER PIPEWORK
	STOP VALVE
	HYDRANT
	SERVICE CONNECTION
	LAY WATER MAIN UNDER STORMWATER PIPE (300mm MIN. VERTICAL CLEARANCE) - REFER TO WAT-1255-H
	LAY WATER MAIN OVER STORMWATER PIPE (300mm MIN. VERTICAL CLEARANCE) - REFER TO WAT-1255-H
	LIMIT OF SUBDIVISION WORKS

PLAN  
SCALE 1:250

REV.	DATE	AMENDMENT	DRAWN	CHECK	DESIGN	VERIFY
A	11.11.2014	INITIAL DRAFT	J.N.	L.G.	J.N.	L.G.
B	07.01.2015	AMENDED ISSUE	J.N.	L.G.	J.N.	L.G.
C	21.01.2015	AMENDED ISSUE	J.N.	L.G.	J.N.	L.G.
0	10.02.2015	CONSTRUCTION ISSUE	J.N.	L.G.	J.N.	L.G.
1	17.02.2015	APPROVED FOR CONSTRUCTION	J.N.	L.G.	J.N.	L.G.
2	07.04.2015	AMENDED CONSTRUCTION ISSUE	J.N.	L.G.	J.N.	L.G.
WAC	30.10.2015	WORK AS CONSTRUCTED - RAR	A.S.A.			B.K.

SCALES	
0 5 10	A1 / A3 1:250 / 1:500

**adw Johnson**

Hunter Office  
Unit 7/335 Hillsborough Rd  
Warners Bay N.S.W. 2282  
Phone: (02) 4978 5100  
Fax: (02) 4978 5199  
email: hunter@adwjohnson.com.au  
www.adwjohnson.com.au  
ABN 62 129 445 398

CLIENT

**JOHNSON PROPERTY GROUP**

PROPERTY DESCRIPTION

PROPOSED SUBDIVISION  
STAGES 1G & 1H WATAGAN PARK  
McCULLOUGH STREET, COORANBONG  
DA/573/2014

PROJECT	POTABLE WATER, RECYCLED WATER AND PRESSURE SEWER RETICULATION		
PLAN TITLE	RECYCLED WATER DETAIL PLAN SHEET 4		
PROJECT No.	DISCIPLINE	NUMBER	REV.
239078(1G & 1H)	- WAT -	013	WAC





DIAL 1100  
BEFORE YOU DIG



PLAN  
SCALE 1:250

LEGEND

- PE PRESSURE SEWER RETICULATION
- PE SEWER PRESSURE MAIN
- PVC-M POTABLE WATER RETICULATION
- POTABLE WATER SERVICE
- DN200 PVC-M POTABLE WATER TRANSFER MAIN
- PVC-M RECYCLED WATER RETICULATION
- RECYCLED WATER SERVICE
- DN250 PVC-M RECYCLED WATER TRANSFER MAIN
- TELSTRA
- UNDERGROUND POWER
- STORMWATER PIPEWORK
- ISOLATION VALVE
- FLUSHING POINT (REFER TO NOTE 4)
- WASTEWATER COLLECTION TANK AND BOUNDARY KIT
- SERVICE CONNECTION
- LAY WATER MAIN UNDER STORMWATER PIPE (300mm MIN. VERTICAL CLEARANCE) - REFER TO WAT-1255-H
- LAY WATER MAIN OVER STORMWATER PIPE (300mm MIN. VERTICAL CLEARANCE) - REFER TO WAT-1255-H

PRESSURE SEWER SERVICE CONNECTIONS  
TOTAL 41 CONNECTIONS  
• SINGLE SERVICES  
- 20 x SHORT SIDE  
- 21 x LONG SIDE

PRESSURE SEWER PIPE DATA		
PIPE SIZE (mm)	PIPE MATERIAL	TOTAL LENGTH (m)
DN315	PE100 PN16	151
DN280	PE100 PN16	15
DN90	PE100 PN16	90
DN75	PE100 PN16	488
DN50	PE100 PN16	395

- NOTES:
- FOR POTABLE WATER PIPEWORK DETAIL PLANS REFER TO DRGS-004 TO 007.
  - FOR RECYCLED WATER PIPEWORK DETAIL PLANS REFER TO DRGS-010 AND 013.
  - FOR TYPICAL SERVICE CONNECTION DETAILS REFER TO DRG-024.
  - FOR FLUSHING POINT TYPICAL DETAILS REFER TO STANDARD DRAWING PSS-1017-FS.
  - CONTRACTOR MAY BEND POLYETHYLENE PIPEWORK IN PLACE OF USING STANDARD FITTINGS WITH A MIN. BENDING RADIUS OF 20 x PIPE DIAM.
  - ALL BENDS SHALL BE ELECTROFUSION SWEEP BENDS (FABRICATED BENDS SHALL NOT BE USED).
  - DN315 AND DN280 PE PRESSURE SEWER MAIN TO BE LAID TO GRADE.
  - DN90 AND DN75 ALONG COURIN DRIVE TO BE LAID TO GRADE.

WORK-AS-CONSTRUCTED

REV.	DATE	AMENDMENT	DRAWN	CHECK	DESIGN	VERIFY	SCALES
A	11.11.2014	INITIAL DRAFT	J.N.	L.G.	J.N.	L.G.	 A1 / A3 1:250 / 1:500
B	07.01.2015	AMENDED ISSUE	J.N.	L.G.	J.N.	L.G.	
C	21.01.2015	AMENDED ISSUE	J.N.	L.G.	J.N.	L.G.	
0	10.02.2015	CONSTRUCTION ISSUE	J.N.	L.G.	J.N.	L.G.	
1	17.02.2015	APPROVED FOR CONSTRUCTION	J.N.	L.G.	J.N.	L.G.	
2	07.04.2015	AMENDED CONSTRUCTION ISSUE	J.N.	L.G.	J.N.	L.G.	
WAC	30.10.2015	WORK AS CONSTRUCTED - RAR	A.S.A.			B.K.	

DESIGN FILE	NO.
N:\	

**adw Johnson**

Hunter Office  
Unit 7/335 Hillsborough Rd  
Warners Bay N.S.W. 2282  
Phone: (02) 4978 5100  
Fax: (02) 4978 5199  
email: hunter@adwjohnson.com.au  
www.adwjohnson.com.au  
ABN 62 129 445 398

CLIENT

**JOHNSON PROPERTY GROUP**

PROPERTY DESCRIPTION

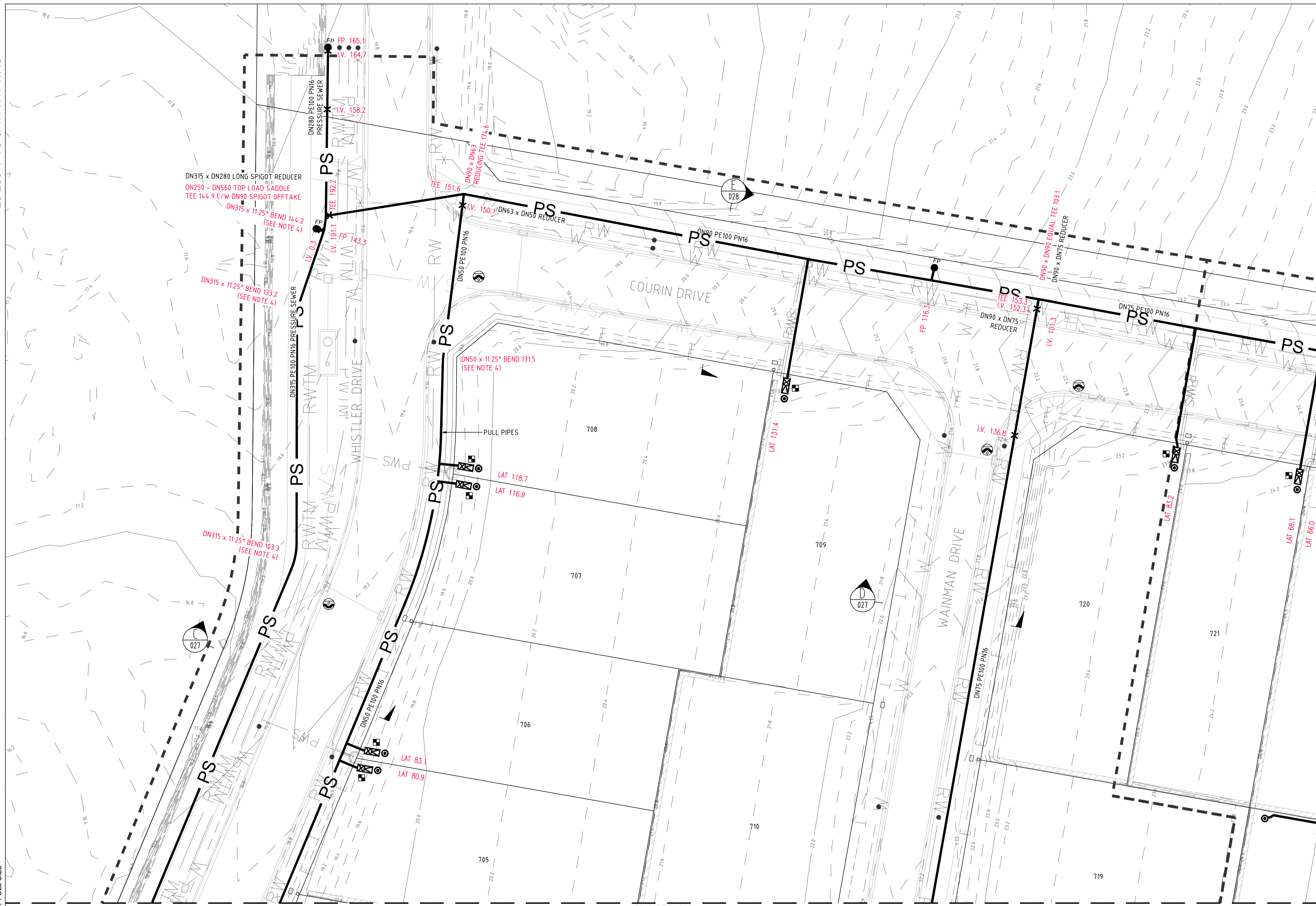
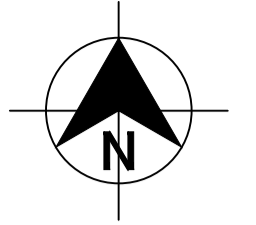
PROPOSED SUBDIVISION  
STAGES 1G & 1H WATAGAN PARK  
McCULLOUGH STREET, COORANBONG  
DA/573/2014

PROJECT	POTABLE WATER, RECYCLED WATER AND PRESSURE SEWER RETICULATION		
PLAN TITLE	PRESSURE SEWER DETAIL PLAN SHEET 1		
PROJECT No.	DISCIPLINE	NUMBER	REV.
239078(1G & 1H)	- WAT -	016	WAC



20-23647 1G & 1H WW WAC

100mm AT FULL SIZE



**LEGEND**

	PE PRESSURE SEWER RETICULATION
	PE SEWER PRESSURE MAIN
	PVC-M POTABLE WATER RETICULATION
	POTABLE WATER SERVICE
	DN200 PVC-M POTABLE WATER TRANSFER MAIN
	PVC-M RECYCLED WATER RETICULATION
	RECYCLED WATER SERVICE
	DN250 PVC-M RECYCLED WATER TRANSFER MAIN
	TELSTRA
	UNDERGROUND POWER
	STORMWATER PIPEWORK
	ISOLATION VALVE
	FLUSHING POINT (REFER TO NOTE 4)
	WASTEWATER COLLECTION TANK AND BOUNDARY KIT
	SERVICE CONNECTION
	LAY WATER MAIN UNDER STORMWATER PIPE (300mm MIN. VERTICAL CLEARANCE) - REFER TO WAT-1255-H
	LAY WATER MAIN OVER STORMWATER PIPE (300mm MIN. VERTICAL CLEARANCE) - REFER TO WAT-1255-H
	LIMIT OF SUBDIVISION WORKS

**PLAN**  
SCALE 1:250

■ PRESSURE SEWER SERVICE CONNECTIONS  
TOTAL 41 CONNECTIONS  
• SINGLE SERVICES  
- 20 x SHORT SIDE  
- 21 x LONG SIDE

**PRESSURE SEWER PIPE DATA**

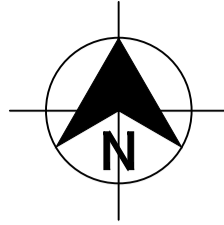
PIPE SIZE (mm)	PIPE MATERIAL	TOTAL LENGTH (m)
DN315	PE100 PN16	151
DN280	PE100 PN16	15
DN90	PE100 PN16	90
DN75	PE100 PN16	488
DN50	PE100 PN16	395

- NOTES:**
- FOR POTABLE WATER PIPEWORK DETAIL PLANS REFER TO DRGS-004 TO 007.
  - FOR RECYCLED WATER PIPEWORK DETAIL PLANS REFER TO DRGS-010 AND 013.
  - FOR TYPICAL SERVICE CONNECTION DETAILS REFER TO DRG-024.
  - FOR FLUSHING POINT TYPICAL DETAILS REFER TO STANDARD DRAWING PSS-1017-FS.
  - CONTRACTOR MAY BEND POLYETHYLENE PIPEWORK IN PLACE OF USING STANDARD FITTINGS WITH A MIN. BENDING RADIUS OF 20 x PIPE DIAM.
  - ALL BENDS SHALL BE ELECTROFUSION SWEEP BENDS (FABRICATED BENDS SHALL NOT BE USED).
  - DN315 AND DN280 PE PRESSURE SEWER MAIN TO BE LAID TO GRADE.
  - DN90 AND DN75 ALONG COURIN DRIVE TO BE LAID TO GRADE.

**WORK-AS-CONSTRUCTED**

<p>REV. DATE AMENDMENT DRAWN CHECK DESIGN VERIFY SCALES</p> <p>A 11.11.2014 INITIAL DRAFT J.N. L.G. J.N. L.G.</p> <p>B 07.01.2015 AMENDED ISSUE J.N. L.G. J.N. L.G.</p> <p>C 21.01.2015 AMENDED ISSUE J.N. L.G. J.N. L.G.</p> <p>0 10.02.2015 CONSTRUCTION ISSUE J.N. L.G. J.N. L.G.</p> <p>1 17.02.2015 APPROVED FOR CONSTRUCTION J.N. L.G. J.N. L.G.</p> <p>2 07.04.2015 AMENDED CONSTRUCTION ISSUE J.N. L.G. J.N. L.G.</p> <p>WAC 30.10.2015 WORK AS CONSTRUCTED - RAR A.S.A. B.K.</p>		<p>0 5 10 A1 / A3 1:250 / 1:500</p>		<p>Hunter Office Unit 7/335 Hillsborough Rd Warners Bay N.S.W. 2282 Phone: (02) 4978 5100 Fax: (02) 4978 5199 email: hunter@adwjohanson.com.au www.adwjohanson.com.au ABN 62 129 445 398</p>		<p>CLIENT</p>		<p>PROPERTY DESCRIPTION</p> <p>PROPOSED SUBDIVISION STAGES 1G &amp; 1H WATAGAN PARK McCULLOUGH STREET, COORANBONG DA/573/2014</p>		<p>PROJECT POTABLE WATER, RECYCLED WATER AND PRESSURE SEWER RETICULATION</p> <p>PLAN TITLE PRESSURE SEWER DETAIL PLAN SHEET 2</p>		<p>PROJECT No. 239078(1G &amp; 1H)</p> <p>DISCIPLINE - WAT -</p> <p>NUMBER 017</p> <p>REV. WAC</p>	
<p>DESIGN FILE N:\</p>		<p>ALL DIMENSIONS ARE IN METRES. DO NOT SCALE</p>		<p>ADW Johnson</p>		<p>DATUM A.H.D.</p>		<p>PROJECT No. 239078(1G &amp; 1H)</p> <p>DISCIPLINE - WAT -</p> <p>NUMBER 017</p> <p>REV. WAC</p>		<p>PROJECT No. 239078(1G &amp; 1H)</p> <p>DISCIPLINE - WAT -</p> <p>NUMBER 017</p> <p>REV. WAC</p>			





- PRESSURE SEWER SERVICE CONNECTIONS  
 TOTAL 41 CONNECTIONS  
 • SINGLE SERVICES  
 - 20 x SHORT SIDE  
 - 21 x LONG SIDE

PRESSURE SEWER PIPE DATA		
PIPE SIZE (mm)	PIPE MATERIAL	TOTAL LENGTH (m)
DN315	PE100 PN16	151
DN280	PE100 PN16	15
DN90	PE100 PN16	90
DN75	PE100 PN16	488
DN50	PE100 PN16	395

- NOTES:  
 1. FOR POTABLE WATER PIPEWORK DETAIL PLANS REFER TO DRGS-004 TO 007.  
 2. FOR RECYCLED WATER PIPEWORK DETAIL PLANS REFER TO DRGS-010 AND 013.  
 3. FOR TYPICAL SERVICE CONNECTION DETAILS REFER TO DRG-024.  
 4. FOR FLUSHING POINT TYPICAL DETAILS REFER TO STANDARD DRAWING PSS-1017-FS.  
 5. CONTRACTOR MAY BEND POLYETHYLENE PIPEWORK IN PLACE OF USING STANDARD FITTINGS WITH A MIN. BENDING RADIUS OF 20 x PIPE DIAM.  
 6. ALL BENDS SHALL BE ELECTROFUSION SWEEP BENDS (FABRICATED BENDS SHALL NOT BE USED).  
 7. DN315 AND DN280 PE PRESSURE SEWER MAIN TO BE LAID TO GRADE.  
 8. DN90 AND DN75 ALONG COURIN DRIVE TO BE LAID TO GRADE.

- LEGEND
- PS PE PRESSURE SEWER RETICULATION
  - PVC-M POTABLE WATER RETICULATION
  - PWS POTABLE WATER SERVICE
  - PVC-M RECYCLED WATER RETICULATION
  - RWS RECYCLED WATER SERVICE
  - TELSTRA UNDERGROUND POWER
  - STORMWATER PIPEWORK
  - X ISOLATION VALVE
  - FP FLUSHING POINT
  - WASTEWATER COLLECTION TANK AND BOUNDARY KIT
  - SERVICE CONNECTION
  - LAY WATER MAIN UNDER STORMWATER PIPE (300mm MIN. VERTICAL CLEARANCE) - REFER TO WAT-1255-H
  - LAY WATER MAIN OVER STORMWATER PIPE (300mm MIN. VERTICAL CLEARANCE) - REFER TO WAT-1255-H
  - - - - - LIMIT OF SUBDIVISION WORKS



PLAN  
 SCALE 1:250

WORK-AS-CONSTRUCTED

REV.	DATE	AMENDMENT	DRAWN	CHECK	DESIGN	VERIFY	SCALES
A	11.11.2014	INITIAL DRAFT	J.N.	L.G.	J.N.	L.G.	
B	07.01.2015	AMENDED ISSUE	J.N.	L.G.	J.N.	L.G.	
C	21.01.2015	AMENDED ISSUE	J.N.	L.G.	J.N.	L.G.	
0	10.02.2015	CONSTRUCTION ISSUE	J.N.	L.G.	J.N.	L.G.	
1	17.02.2015	APPROVED FOR CONSTRUCTION	J.N.	L.G.	J.N.	L.G.	
2	07.04.2015	AMENDED CONSTRUCTION ISSUE	J.N.	L.G.	J.N.	L.G.	
WAC	30.10.2015	WORK AS CONSTRUCTED - RAR	A.S.A.			B.K.	

ALL DIMENSIONS ARE IN METRES. DO NOT SCALE

0 5 10 A1 / A3  
 1:250 / 1:500

Hunter Office  
 Unit 7/335 Hillsborough Rd  
 Warners Bay N.S.W. 2282  
 Phone: (02) 4978 5100  
 Fax: (02) 4978 5199  
 email: hunter@adwjohnson.com.au  
 www.adwjohnson.com.au  
 ABN 62 129 445 398

CLIENT

PROPERTY DESCRIPTION

PROPOSED SUBDIVISION  
 STAGES 1G & 1H WATAGAN PARK  
 McCULLOUGH STREET, COORANBONG  
 DA/573/2014

SURVEYED  
 ADW Johnson

DATUM  
 A.H.D.

PROJECT  
 POTABLE WATER, RECYCLED WATER AND PRESSURE SEWER RETICULATION

PLAN TITLE  
 PRESSURE SEWER DETAIL PLAN SHEET 3

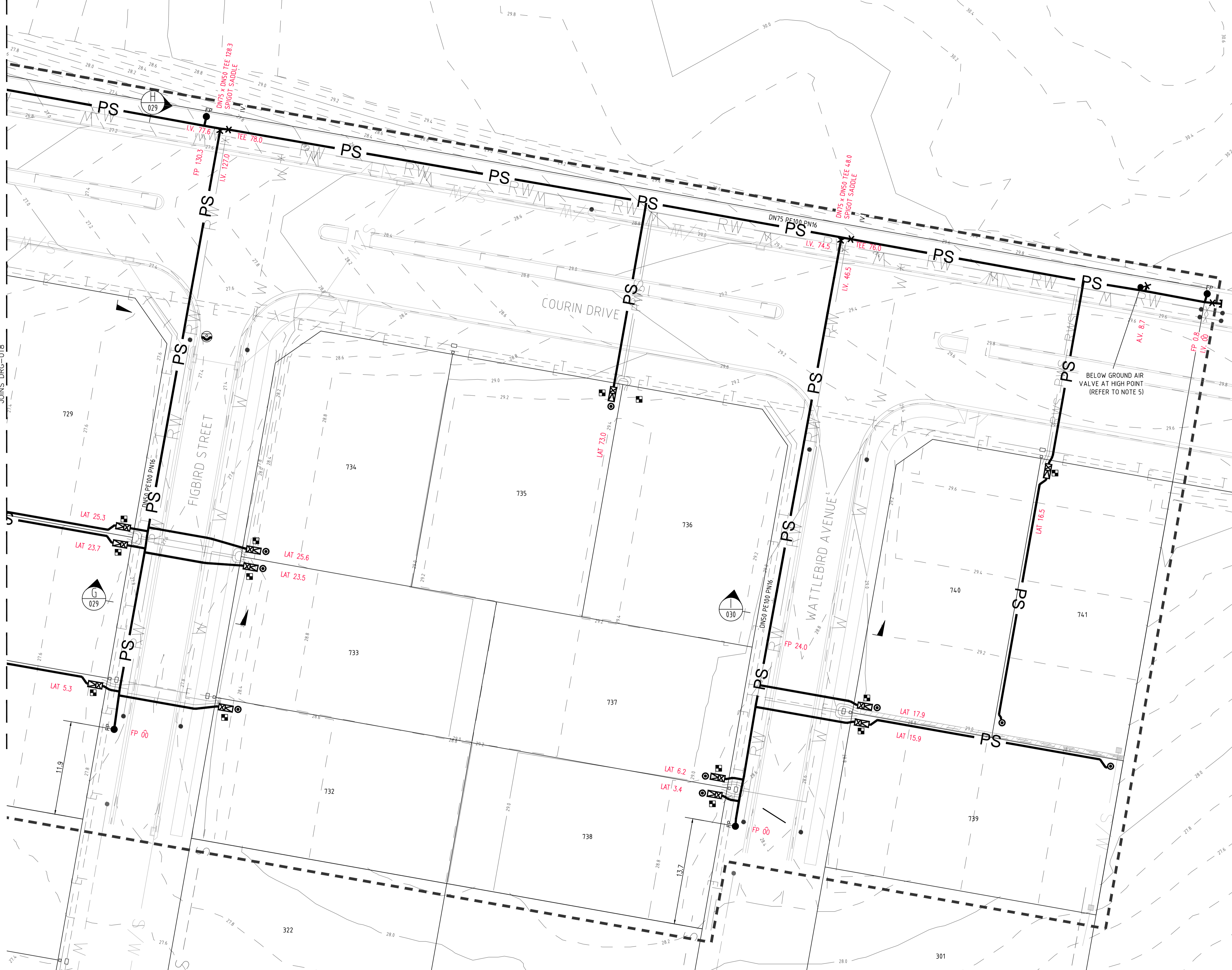
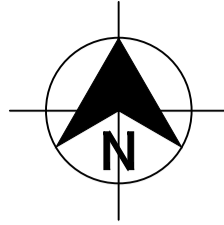
PROJECT No.  
 239078(1G & 1H)

DISCIPLINE  
 WAT

NUMBER  
 018

REV.  
 WAC





■ PRESSURE SEWER SERVICE CONNECTIONS  
 TOTAL 41 CONNECTIONS  
 • SINGLE SERVICES  
 -20 x SHORT SIDE  
 -21 x LONG SIDE

PRESSURE SEWER PIPE DATA		
PIPE SIZE (mm)	PIPE MATERIAL	TOTAL LENGTH (m)
DN315	PE100 PN16	151
DN280	PE100 PN16	15
DN90	PE100 PN16	90
DN75	PE100 PN16	488
DN50	PE100 PN16	395

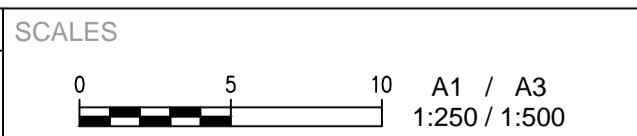
- NOTES:
- FOR POTABLE WATER PIPEWORK DETAIL PLANS REFER TO DRGS-004 TO 007.
  - FOR RECYCLED WATER PIPEWORK DETAIL PLANS REFER TO DRGS-010 AND 013.
  - FOR TYPICAL SERVICE CONNECTION DETAILS REFER TO DRG-024.
  - FOR FLUSHING POINT TYPICAL DETAILS REFER TO STANDARD DRAWING PSS-1017-FS.
  - FOR AIR VALVE TYPICAL DETAILS REFER TO STANDARD DRAWING PSS-1016-FS.
  - CONTRACTOR MAY BEND POLYETHYLENE PIPEWORK IN PLACE OF USING STANDARD FITTINGS WITH A MIN. BENDING RADIUS OF 20 x PIPE DIAM.
  - ALL BENDS SHALL BE ELECTROFUSION SWEEP BENDS (FABRICATED BENDS SHALL NOT BE USED).
  - DN315 AND DN280 PE PRESSURE SEWER MAIN TO BE LAID TO GRADE.
  - DN90 AND DN75 ALONG COURIN DRIVE TO BE LAID TO GRADE.

LEGEND

PS	PE PRESSURE SEWER RETICULATION
PWS	PVC-M POTABLE WATER RETICULATION
PWS	POTABLE WATER SERVICE
RWS	PVC-M RECYCLED WATER RETICULATION
RWS	RECYCLED WATER SERVICE
---	EXISTING WATER PIPEWORK (HUNTER WATER)
---	EXISTING SEWER PIPEWORK (HUNTER WATER)
---	TELSTRA
---	UNDERGROUND POWER
---	STORMWATER PIPEWORK
X	ISOLATION VALVE
FP	FLUSHING POINT
WWT	WASTEWATER COLLECTION TANK AND BOUNDARY KIT
SC	SERVICE CONNECTION
W	LAY WATER MAIN UNDER STORMWATER PIPE (300mm MIN. VERTICAL CLEARANCE) - REFER TO WAT-1255-H
W	LAY WATER MAIN OVER STORMWATER PIPE (300mm MIN. VERTICAL CLEARANCE) - REFER TO WAT-1255-H
---	LIMIT OF SUBDIVISION WORKS

PLAN  
SCALE 1:250

REV.	DATE	AMENDMENT	DRAWN	CHECK	DESIGN	VERIFY
A	11.11.2014	INITIAL DRAFT	J.N.	L.G.	J.N.	L.G.
B	07.01.2015	AMENDED ISSUE	J.N.	L.G.	J.N.	L.G.
C	21.01.2015	AMENDED ISSUE	J.N.	L.G.	J.N.	L.G.
0	10.02.2015	CONSTRUCTION ISSUE	J.N.	L.G.	J.N.	L.G.
1	17.02.2015	APPROVED FOR CONSTRUCTION	J.N.	L.G.	J.N.	L.G.
2	07.04.2015	AMENDED CONSTRUCTION ISSUE	J.N.	L.G.	J.N.	L.G.
WAC	30.10.2015	WORK AS CONSTRUCTED - RAR	A.S.A.			B.K.



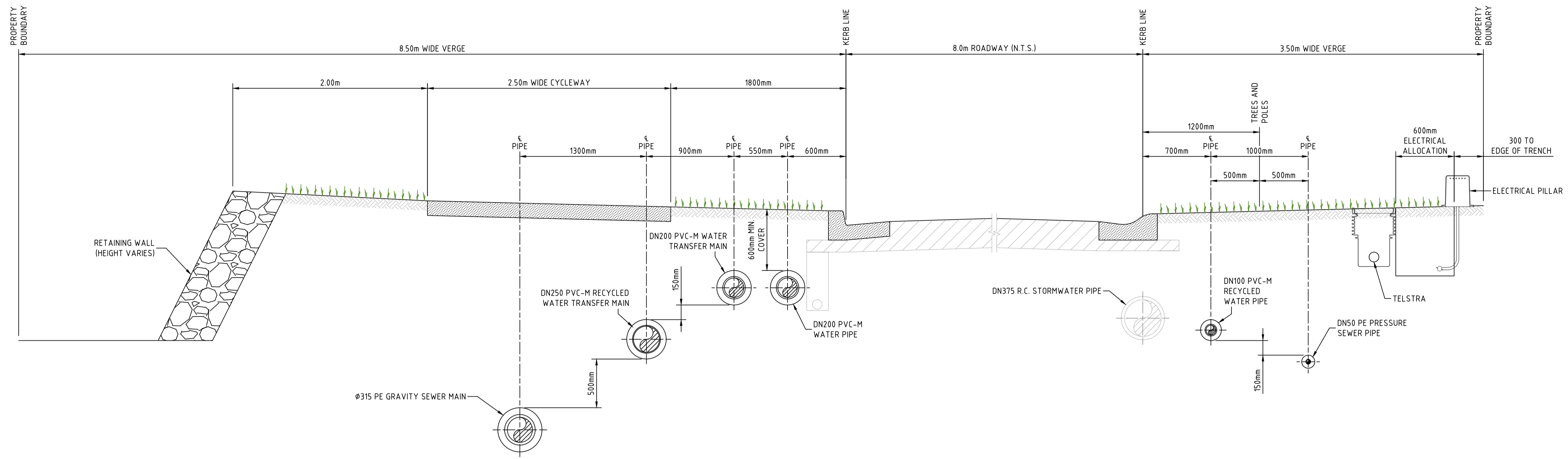
Hunter Office  
 Unit 7/335 Hillsborough Rd  
 Warners Bay N.S.W. 2282  
 Phone: (02) 4978 5100  
 Fax: (02) 4978 5199  
 email: hunter@adwjohnson.com.au  
 www.adwjohnson.com.au  
 ABN 62 129 445 398



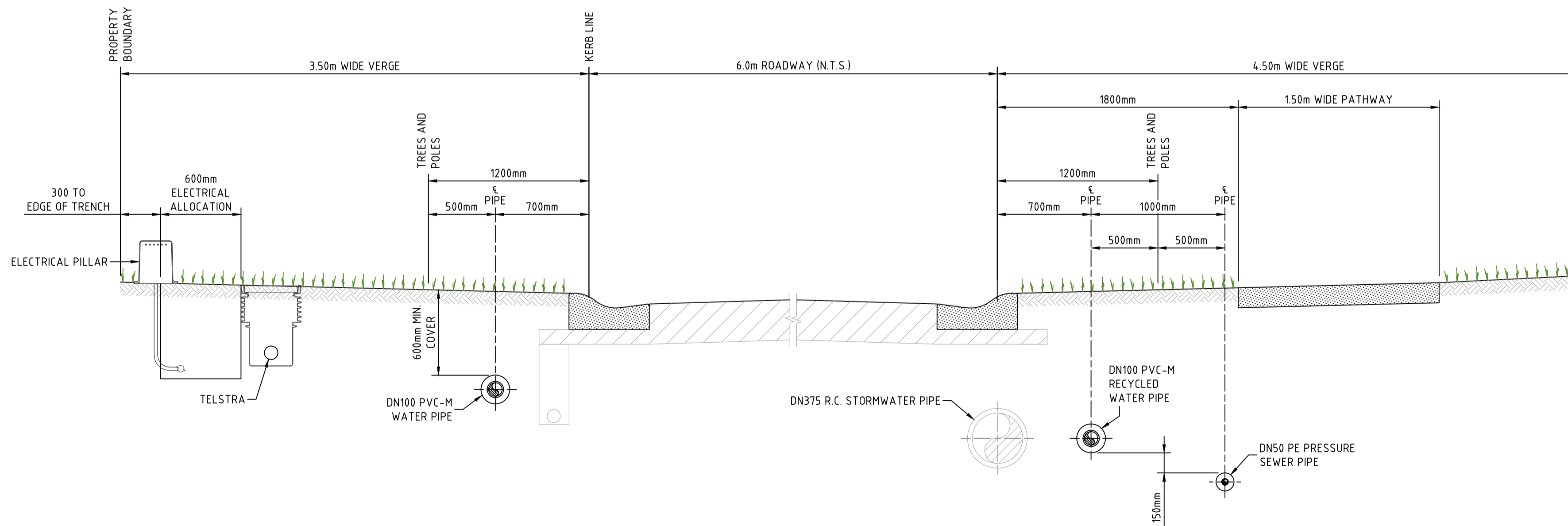
PROPERTY DESCRIPTION  
**PROPOSED SUBDIVISION  
 STAGES 1G & 1H WATAGAN PARK  
 McCULLOUGH STREET, COORANBONG  
 DA/573/2014**

PROJECT	POTABLE WATER, RECYCLED WATER AND PRESSURE SEWER RETICULATION		
PLAN TITLE	PRESSURE SEWER DETAIL PLAN SHEET 4		
PROJECT No.	DISCIPLINE	NUMBER	REV.
239078(1G & 1H)	WAT	019	WAC





SECTION A A A  
004 010 016  
SCALE 1:25



SECTION B B B  
004 010 016  
SCALE 1:25

NOTE:  
1. FOR MINIMUM VERTICAL AND HORIZONTAL CLEARANCES REFER TO WATER SUPPLY CODE OF AUSTRALIA WSA 03-2002-2.3, TABLE 4.1 (HUNTER WATER EDITION VERSION 1).

REV.	DATE	AMENDMENT	DRAWN	CHECK	DESIGN	VERIFY
A	11.11.2014	INITIAL DRAFT	J.N.	L.G.	J.N.	L.G.
B	07.01.2015	AMENDED ISSUE	J.N.	L.G.	J.N.	L.G.
C	21.01.2015	AMENDED ISSUE	J.N.	L.G.	J.N.	L.G.
0	10.02.2015	CONSTRUCTION ISSUE	J.N.	L.G.	J.N.	L.G.
1	17.02.2015	APPROVED FOR CONSTRUCTION	J.N.	L.G.	J.N.	L.G.
2	07.04.2015	AMENDED CONSTRUCTION ISSUE	J.N.	L.G.	J.N.	L.G.
WAC	28.10.2015	WORK AS CONSTRUCTED - RAR	A.S.A.	L.G.	J.N.	B.K.

DESIGN FILE N:\

ALL DIMENSIONS ARE IN METRES. DO NOT SCALE

**adw Johnson**  
Hunter Office  
Unit 7/335 Hillsborough Rd  
Warners Bay N.S.W. 2282  
Phone: (02) 4978 5100  
Fax: (02) 4978 5199  
email: hunter@adwjohnson.com.au  
www.adwjohnson.com.au  
ABN 62 129 445 398

CLIENT  
**JOHNSON PROPERTY GROUP**

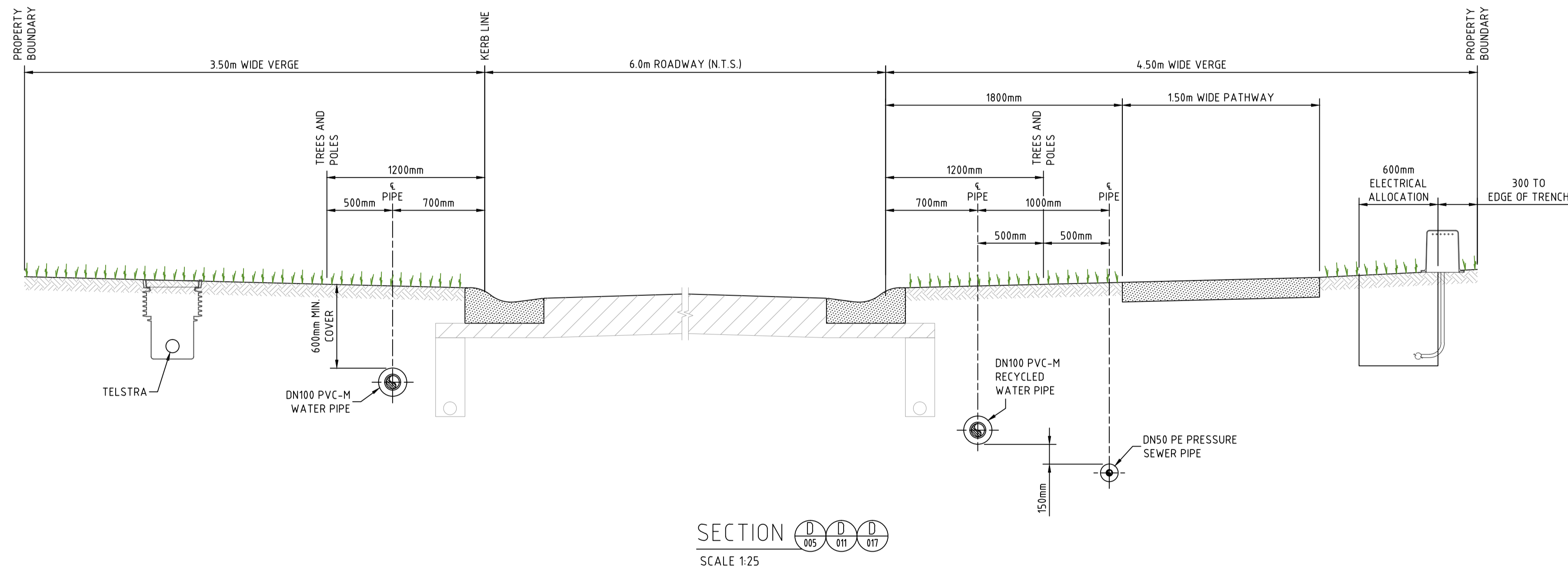
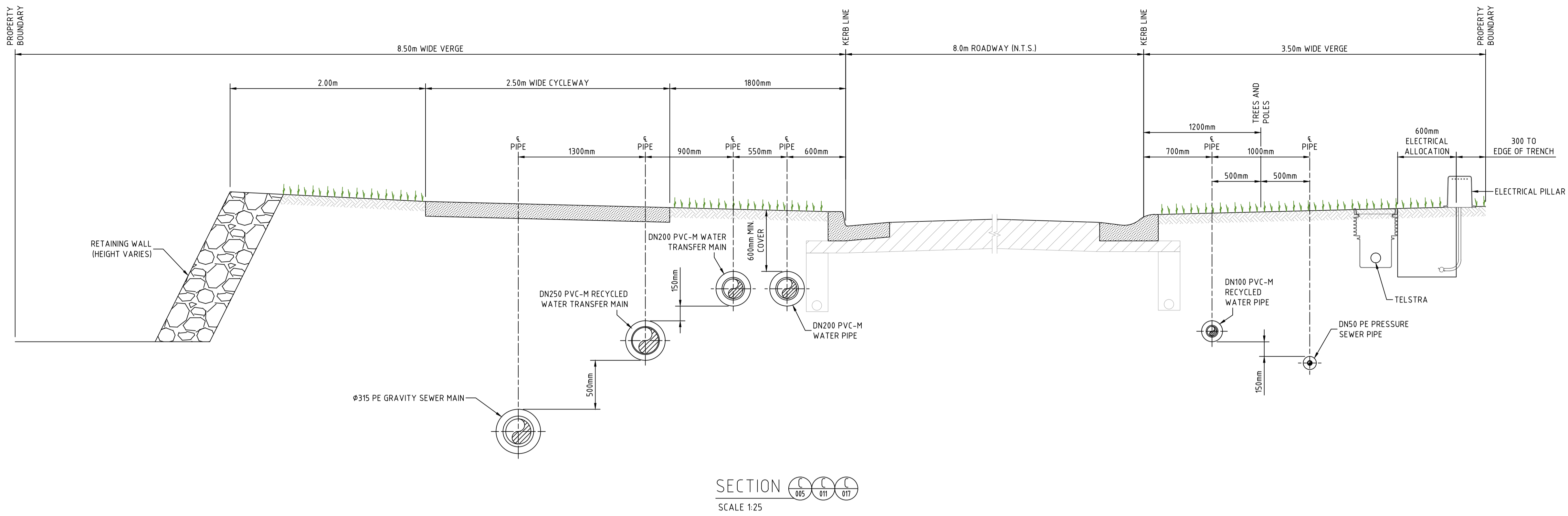
PROPERTY DESCRIPTION  
**PROPOSED SUBDIVISION  
STAGE 1F WATAGAN PARK  
McCULLOUGH STREET, COORANBONG  
DA/573/2014**

PROJECT **POTABLE WATER, RECYCLED WATER AND  
PRESSURE SEWER RETICULATION**

PLAN TITLE  
**ROAD CROSS SECTIONS  
SHEET 1**

SURVEYED ADW Johnson	DATUM A.H.D.	PROJECT No. <b>239078(1G &amp; 1H)</b>	DISCIPLINE <b>- WAT -</b>	NUMBER <b>026</b>	REV. <b>WAC</b>
-------------------------	-----------------	---	------------------------------	----------------------	--------------------

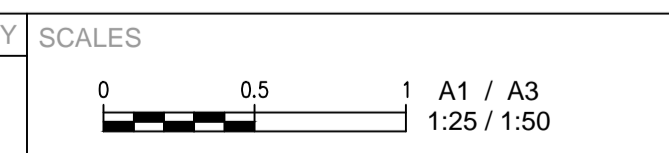




**NOTE:**  
1. FOR MINIMUM VERTICAL AND HORIZONTAL CLEARANCES REFER TO WATER SUPPLY CODE OF AUSTRALIA WSA 03-2002-2.3, TABLE 4.1 (HUNTER WATER EDITION VERSION 1).

100mm AT FULL SIZE

REV.	DATE	AMENDMENT	DRAWN	CHECK	DESIGN	VERIFY
A	11.11.2014	INITIAL DRAFT	J.N.	L.G.	J.N.	L.G.
B	07.01.2015	AMENDED ISSUE	J.N.	L.G.	J.N.	L.G.
C	21.01.2015	AMENDED ISSUE	J.N.	L.G.	J.N.	L.G.
0	10.02.2015	CONSTRUCTION ISSUE	J.N.	L.G.	J.N.	L.G.
1	17.02.2015	APPROVED FOR CONSTRUCTION	J.N.	L.G.	J.N.	L.G.
2	07.04.2015	AMENDED CONSTRUCTION ISSUE	J.N.	L.G.	J.N.	L.G.
WAC	28.10.2015	WORK AS CONSTRUCTED - RAR	A.S.A.		J.N.	B.K.



**adw Johnson**

Hunter Office  
Unit 7/335 Hillsborough Rd  
Warners Bay N.S.W. 2282  
Phone: (02) 4978 5100  
Fax: (02) 4978 5199  
email: hunter@adwjohnson.com.au  
www.adwjohnson.com.au  
ABN 62 129 445 398

CLIENT

PROPERTY DESCRIPTION

PROPOSED SUBDIVISION  
STAGE 1F WATAGAN PARK  
McCULLOUGH STREET, COORANBONG  
DA/573/2014

SURVEYED ADW Johnson DATUM A.H.D.

PROJECT	POTABLE WATER, RECYCLED WATER AND PRESSURE SEWER RETICULATION		
PLAN TITLE	ROAD CROSS SECTIONS SHEET 2		
PROJECT No.	DISCIPLINE	NUMBER	REV.
239078(1G & 1H)	WAT	027	WAC