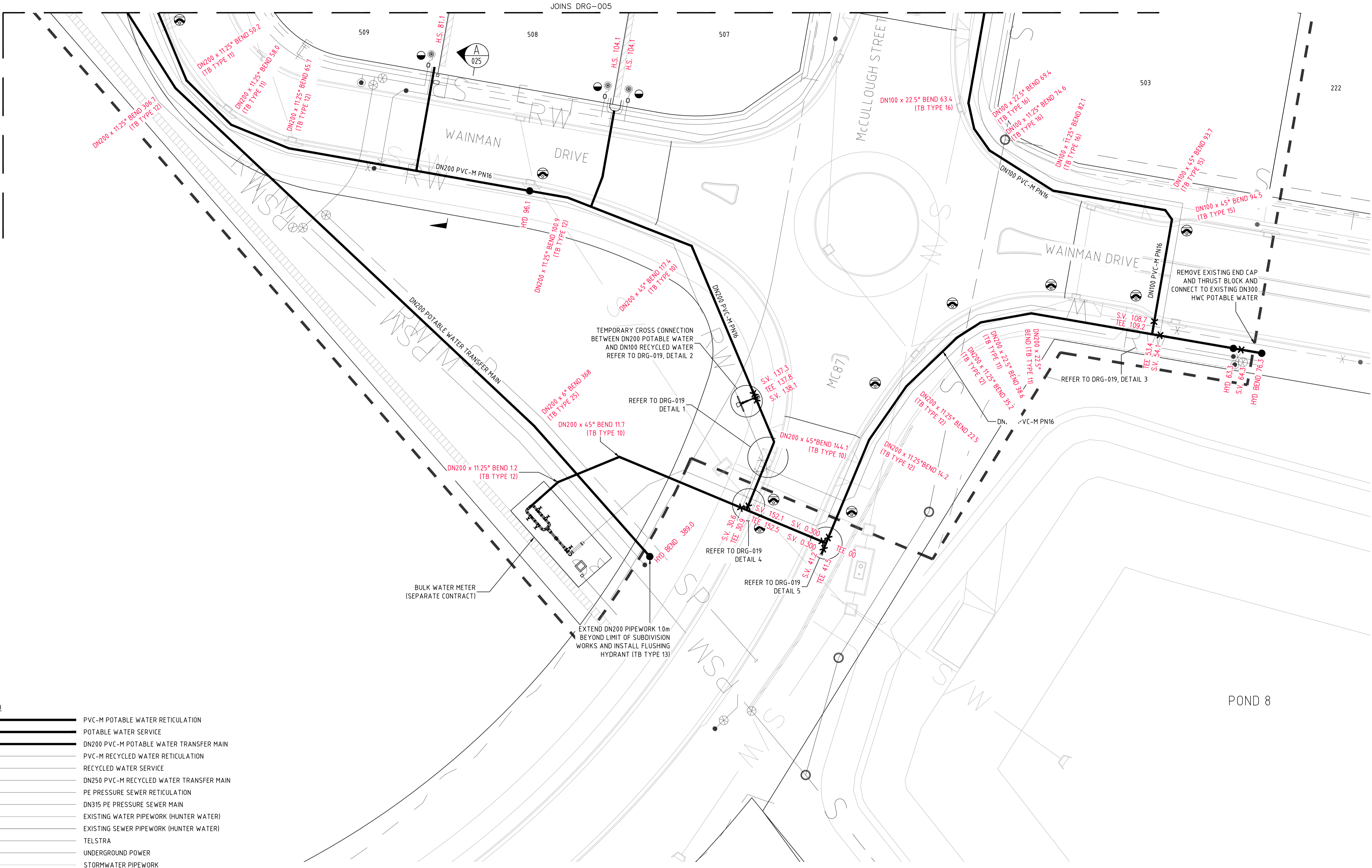
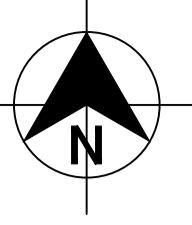




DIAL 1100
BEFORE YOU DIG



- LEGEND**
- PVC-M POTABLE WATER RETICULATION
 - POTABLE WATER SERVICE
 - DN200 PVC-M POTABLE WATER TRANSFER MAIN
 - PVC-M RECYCLED WATER RETICULATION
 - RECYCLED WATER SERVICE
 - DN250 PVC-M RECYCLED WATER TRANSFER MAIN
 - PE PRESSURE SEWER RETICULATION
 - DN315 PE PRESSURE SEWER MAIN
 - EXISTING WATER PIPEWORK (HUNTER WATER)
 - EXISTING SEWER PIPEWORK (HUNTER WATER)
 - TELSTRA
 - UNDERGROUND POWER
 - STORMWATER PIPEWORK
 - STOP VALVE
 - HYDRANT (YELLOW)
 - SERVICE CONNECTION
 - LAY WATER MAIN OVER STORMWATER PIPE (300mm MIN. VERTICAL CLEARANCE) - REFER TO WAT-1255-H
 - LIMIT OF SUBDIVISION WORKS (STAGE 1E)

- POTABLE WATER SERVICE CONNECTIONS**
TOTAL 20 CONNECTIONS
- SINGLE SERVICES IN ACCORDANCE WITH WAT-1106-V
 - 3 x SHORT SIDE
 - 3 x LONG SIDE
 - SPLIT SERVICES IN ACCORDANCE WITH WAT-1107-V
 - 1 x SHORT SIDE
 - 6 x LONG SIDE

PLAN
SCALE 1:250

POTABLE WATER PIPE DATA		
PIPE SIZE (mm)	PIPE MATERIAL	TOTAL LENGTH (m)
DN300	PVC-M PN16	105
DN200	PVC-M PN16	544
DN100	PVC-M PN16	266

- NOTES:**
- FOR RECYCLED WATER PIPEWORK DETAIL PLANS REFER TO DRGS-009 TO 011.
 - FOR PRESSURE SEWER PIPEWORK DETAIL PLANS REFER TO DRGS-014 TO 016.
 - FOR TYPICAL SERVICE CONNECTION DETAILS REFER TO DRG-022.

WORK-AS-CONSTRUCTED

REV.	DATE	AMENDMENT	DRAWN	CHECK	DESIGN	VERIFY	SCALES
A	20.08.2014	INITIAL DRAFT	J.N.	L.G.	J.N.		A1 / A3 1:250 / 1:500
B	03.09.2014	AMENDED ISSUE	T.M.	L.G.	J.N.		
0	22.10.2014	CONSTRUCTION ISSUE	J.N.	L.G.	J.N.	L.G.	
1	19.11.2014	AMENDED CONSTRUCTION ISSUE	J.N.	L.G.	J.N.	L.G.	
2	07.04.2015	AMENDED CONSTRUCTION ISSUE	J.N.	L.G.	J.N.	L.G.	
WAC	26.10.2015	WORK AS CONSTRUCTED - BAR	A.S.A.		J.N.	B.K.	

Hunter Office
Unit 7/335 Hillsborough Rd
Warners Bay N.S.W. 2282
Phone: (02) 4978 5100
Fax: (02) 4978 5199
email: hunter@adwjohanson.com.au
www.adwjohanson.com.au
ABN 62 129 445 398

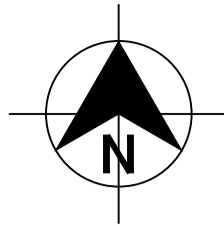
CLIENT

JOHNSON PROPERTY GROUP

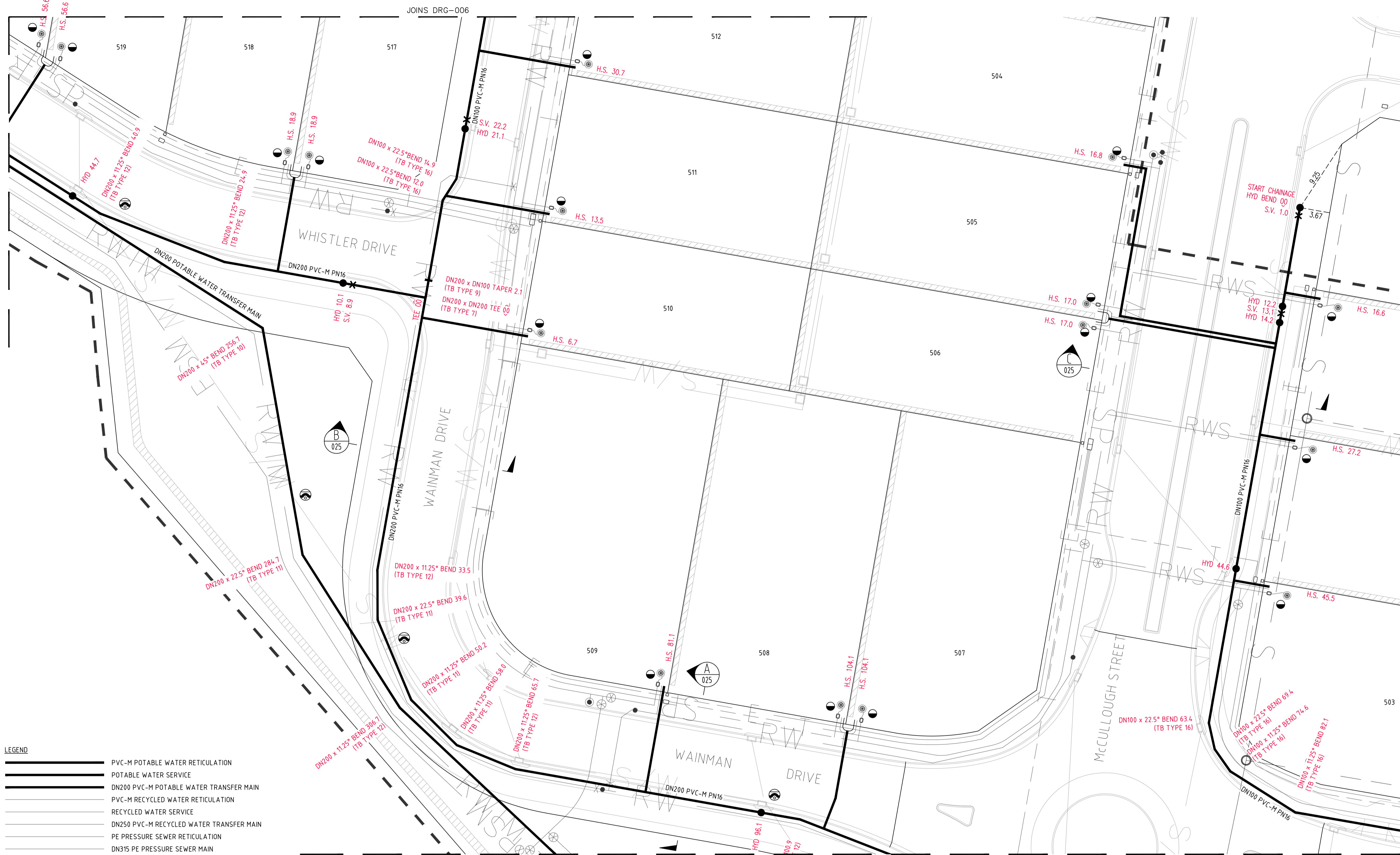
PROPERTY DESCRIPTION

PROPOSED SUBDIVISION
STAGE 1E WATAGAN PARK
McCULLOUGH STREET, COORANBONG
DA/573/2014

PROJECT		DISCIPLINE		NUMBER	REV.
POTABLE WATER, RECYCLED WATER AND PRESSURE SEWER RETICULATION		WAT		004	WAC
PLAN TITLE		PROJECT No.			
POTABLE WATER DETAIL PLAN SHEET 1		239078(1E)			
SURVEYED		DATUM			
ADW Johnson		A.H.D.			



DIAL 1100
BEFORE YOU DIG



LEGEND

	PVC-M POTABLE WATER RETICULATION
	POTABLE WATER SERVICE
	DN200 PVC-M POTABLE WATER TRANSFER MAIN
	PVC-M RECYCLED WATER RETICULATION
	RECYCLED WATER SERVICE
	DN250 PVC-M RECYCLED WATER TRANSFER MAIN
	PE PRESSURE SEWER RETICULATION
	DN315 PE PRESSURE SEWER MAIN
	EXISTING WATER PIPEWORK (HUNTER WATER)
	EXISTING SEWER PIPEWORK (HUNTER WATER)
	TELSTRA
	UNDERGROUND POWER
	STORMWATER PIPEWORK
	STOP VALVE
	HYDRANT (YELLOW)
	SERVICE CONNECTION
	LAY WATER MAIN OVER STORMWATER PIPE (300mm MIN. VERTICAL CLEARANCE) - REFER TO WAT-1255-H
	LIMIT OF SUBDIVISION WORKS (STAGE 1E)

PLAN
SCALE 1:250

- POTABLE WATER SERVICE CONNECTIONS**
TOTAL 20 CONNECTIONS
- SINGLE SERVICES IN ACCORDANCE WITH WAT-1106-V
 - 3 x SHORT SIDE
 - 3 x LONG SIDE
 - SPLIT SERVICES IN ACCORDANCE WITH WAT-1107-V
 - 1 x SHORT SIDE
 - 6 x LONG SIDE

POTABLE WATER PIPE DATA		
PIPE SIZE (mm)	PIPE MATERIAL	TOTAL LENGTH (m)
DN300	PVC-M PN16	105
DN200	PVC-M PN16	544
DN100	PVC-M PN16	266

- NOTES:**
- FOR RECYCLED WATER PIPEWORK DETAIL PLANS REFER TO DRGS-009 TO 011.
 - FOR PRESSURE SEWER PIPEWORK DETAIL PLANS REFER TO DRGS-014 TO 016.
 - FOR TYPICAL SERVICE CONNECTION DETAILS REFER TO DRG-022.

WORK-AS-CONSTRUCTED

REV.	DATE	AMENDMENT	DRAWN	CHECK	DESIGN	VERIFY
A	20.08.2014	INITIAL DRAFT	J.N.	L.G.	J.N.	
B	03.09.2014	AMENDED ISSUE	T.M.	L.G.	J.N.	
0	22.10.2014	CONSTRUCTION ISSUE	J.N.	L.G.	J.N.	L.G.
1	19.11.2014	AMENDED CONSTRUCTION ISSUE	J.N.	L.G.	J.N.	L.G.
2	07.04.2015	AMENDED CONSTRUCTION ISSUE	J.N.	L.G.	J.N.	L.G.
WAC	26.10.2015	WORK AS CONSTRUCTED - RAR	A.S.A.		J.N.	B.K.

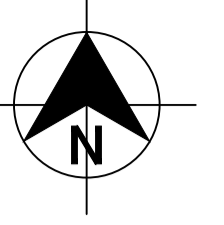


Hunter Office
Unit 7/335 Hillsborough Rd
Warners Bay N.S.W. 2282
Phone: (02) 4978 5100
Fax: (02) 4978 5199
email: hunter@adwjohnson.com.au
www.adwjohnson.com.au
ABN 62 129 445 398



PROPERTY DESCRIPTION
PROPOSED SUBDIVISION
STAGE 1E WATAGAN PARK
McCULLOUGH STREET, COORANBONG
DA/573/2014

PROJECT		DISCIPLINE		NUMBER	REV.
POTABLE WATER, RECYCLED WATER AND PRESSURE SEWER RETICULATION		WAT		005	WAC
PLAN TITLE		PROJECT No.			
POTABLE WATER DETAIL PLAN SHEET 2		239078(1E)			
SURVEYED		DATUM			
ADW Johnson		A.H.D.			



LEGEND

	PVC-M POTABLE WATER RETICULATION
	POTABLE WATER SERVICE
	DN200 PVC-M POTABLE WATER TRANSFER MAIN
	PVC-M RECYCLED WATER RETICULATION
	RECYCLED WATER SERVICE
	DN250 PVC-M RECYCLED WATER TRANSFER MAIN
	PE PRESSURE SEWER RETICULATION
	DN315 PE PRESSURE SEWER MAIN
	EXISTING WATER PIPEWORK (HUNTER WATER)
	EXISTING SEWER PIPEWORK (HUNTER WATER)
	TELSTRA
	UNDERGROUND POWER
	STORMWATER PIPEWORK
	STOP VALVE
	HYDRANT (YELLOW)
	SERVICE CONNECTION
	LAY WATER MAIN OVER STORMWATER PIPE (300mm MIN. VERTICAL CLEARANCE) - REFER TO WAT-1255-H
	LIMIT OF SUBDIVISION WORKS (STAGE 1E)

POTABLE WATER SERVICE CONNECTIONS
 TOTAL 20 CONNECTIONS
 • SINGLE SERVICES IN ACCORDANCE WITH WAT-1106-V
 - 3 x SHORT SIDE
 - 3 x LONG SIDE
 • SPLIT SERVICES IN ACCORDANCE WITH WAT-1107-V
 - 1 x SHORT SIDE
 - 6 x LONG SIDE

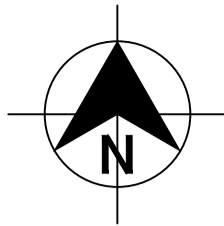
PLAN
SCALE 1:250

PIPE SIZE (mm)	PIPE MATERIAL	TOTAL LENGTH (m)
DN300	PVC-M PN16	105
DN200	PVC-M PN16	544
DN100	PVC-M PN16	266

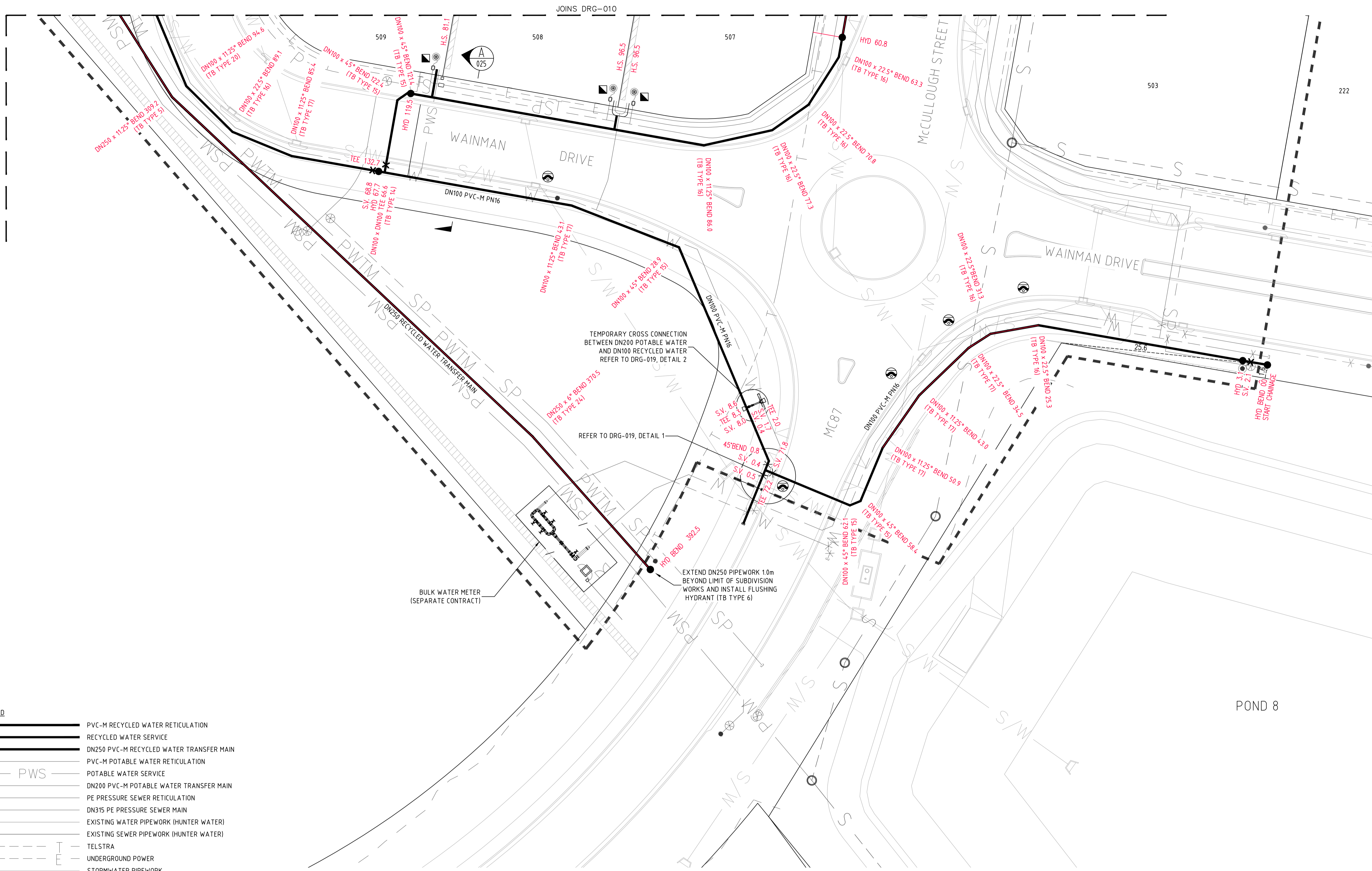
NOTES:
 1. FOR RECYCLED WATER PIPEWORK DETAIL PLANS REFER TO DRGS-009 TO 011.
 2. FOR PRESSURE SEWER PIPEWORK DETAIL PLANS REFER TO DRGS-014 TO 016.
 3. FOR TYPICAL SERVICE CONNECTION DETAILS REFER TO DRG-022.

WORK-AS-CONSTRUCTED

<table border="1"> <thead> <tr> <th>REV.</th> <th>DATE</th> <th>AMENDMENT</th> <th>DRAWN</th> <th>CHECK</th> <th>DESIGN</th> <th>VERIFY</th> </tr> </thead> <tbody> <tr> <td>A</td> <td>20.08.2014</td> <td>INITIAL DRAFT</td> <td>J.N.</td> <td>L.G.</td> <td>J.N.</td> <td></td> </tr> <tr> <td>B</td> <td>03.09.2014</td> <td>AMENDED ISSUE</td> <td>T.M.</td> <td>L.G.</td> <td>J.N.</td> <td></td> </tr> <tr> <td>0</td> <td>22.10.2014</td> <td>CONSTRUCTION ISSUE</td> <td>J.N.</td> <td>L.G.</td> <td>J.N.</td> <td>L.G.</td> </tr> <tr> <td>1</td> <td>19.11.2014</td> <td>AMENDED CONSTRUCTION ISSUE</td> <td>J.N.</td> <td>L.G.</td> <td>J.N.</td> <td>L.G.</td> </tr> <tr> <td>2</td> <td>07.04.2015</td> <td>AMENDED CONSTRUCTION ISSUE</td> <td>J.N.</td> <td>L.G.</td> <td>J.N.</td> <td>L.G.</td> </tr> <tr> <td>WAC</td> <td>26.10.2015</td> <td>WORK AS CONSTRUCTED - BAR</td> <td>A.S.A.</td> <td></td> <td>J.N.</td> <td>B.K.</td> </tr> </tbody> </table>	REV.	DATE	AMENDMENT	DRAWN	CHECK	DESIGN	VERIFY	A	20.08.2014	INITIAL DRAFT	J.N.	L.G.	J.N.		B	03.09.2014	AMENDED ISSUE	T.M.	L.G.	J.N.		0	22.10.2014	CONSTRUCTION ISSUE	J.N.	L.G.	J.N.	L.G.	1	19.11.2014	AMENDED CONSTRUCTION ISSUE	J.N.	L.G.	J.N.	L.G.	2	07.04.2015	AMENDED CONSTRUCTION ISSUE	J.N.	L.G.	J.N.	L.G.	WAC	26.10.2015	WORK AS CONSTRUCTED - BAR	A.S.A.		J.N.	B.K.	<p>ALL DIMENSIONS ARE IN METRES. DO NOT SCALE</p>	<p>Hunter Office Unit 7/335 Hillsborough Rd Warners Bay N.S.W. 2282 Phone: (02) 4978 5100 Fax: (02) 4978 5199 email: hunter@adwjohnson.com.au www.adwjohnson.com.au ABN 62 129 445 398</p>	<p>CLIENT</p>	<p>PROPERTY DESCRIPTION</p> <p>PROPOSED SUBDIVISION STAGE 1E WATAGAN PARK McCULLOUGH STREET, COORANBONG DA/573/2014</p>	<p>PROJECT</p> <p>POTABLE WATER, RECYCLED WATER AND PRESSURE SEWER RETICULATION</p>	<p>PROJECT No.</p> <p>239078(1E)</p>	<p>DISCIPLINE</p> <p>WAT</p>	<p>NUMBER</p> <p>006</p>	<p>REV.</p> <p>WAC</p>
	REV.	DATE	AMENDMENT	DRAWN	CHECK	DESIGN	VERIFY																																																			
A	20.08.2014	INITIAL DRAFT	J.N.	L.G.	J.N.																																																					
B	03.09.2014	AMENDED ISSUE	T.M.	L.G.	J.N.																																																					
0	22.10.2014	CONSTRUCTION ISSUE	J.N.	L.G.	J.N.	L.G.																																																				
1	19.11.2014	AMENDED CONSTRUCTION ISSUE	J.N.	L.G.	J.N.	L.G.																																																				
2	07.04.2015	AMENDED CONSTRUCTION ISSUE	J.N.	L.G.	J.N.	L.G.																																																				
WAC	26.10.2015	WORK AS CONSTRUCTED - BAR	A.S.A.		J.N.	B.K.																																																				
<p>DESIGN FILE: N:\</p>	<p>PLANNED TITLE</p> <p>POTABLE WATER DETAIL PLAN SHEET 3</p>	<p>SURVEYED</p> <p>ADW Johnson</p>	<p>DATUM</p> <p>A.H.D.</p>																																																							



DIAL 1100
BEFORE YOU DIG



LEGEND

	PVC-M RECYCLED WATER RETICULATION
	RECYCLED WATER SERVICE
	DN250 PVC-M RECYCLED WATER TRANSFER MAIN
	PVC-M POTABLE WATER RETICULATION
	POTABLE WATER SERVICE
	DN200 PVC-M POTABLE WATER TRANSFER MAIN
	PE PRESSURE SEWER RETICULATION
	DN315 PE PRESSURE SEWER MAIN
	EXISTING WATER PIPEWORK (HUNTER WATER)
	EXISTING SEWER PIPEWORK (HUNTER WATER)
	TELSTRA
	UNDERGROUND POWER
	STORMWATER PIPEWORK
	STOP VALVE
	HYDRANT
	SERVICE CONNECTION
	LAY WATER MAIN OVER STORMWATER PIPE (300mm MIN. VERTICAL CLEARANCE) - REFER TO WAT-1255-H
	LIMIT OF SUBDIVISION WORKS (STAGE 1E)

RECYCLED WATER SERVICE CONNECTIONS

TOTAL 20 CONNECTIONS

- SINGLE SERVICES IN ACCORDANCE WITH WAT-1106-V
 - 3 x SHORT SIDE
 - 3 x LONG SIDE
- SPLIT SERVICES IN ACCORDANCE WITH WAT-1107-V
 - 1 x SHORT SIDE
 - 6 x LONG SIDE

PLAN
SCALE 1:250

RECYCLED WATER PIPE DATA		
PIPE SIZE (mm)	PIPE MATERIAL	TOTAL LENGTH (m)
DN250	PVC-M PN16	198
DN100	PVC-M PN16	456

- NOTES:
- FOR POTABLE WATER PIPEWORK DETAIL PLANS REFER TO DRGS-004 TO 006.
 - FOR PRESSURE SEWER PIPEWORK DETAIL PLANS REFER TO DRGS-014 TO 016.
 - FOR TYPICAL SERVICE CONNECTION DETAILS REFER TO DRG-022.

WORK-AS-CONSTRUCTED

REV.	DATE	AMENDMENT	DRAWN	CHECK	DESIGN	VERIFY
A	20.08.2014	INITIAL DRAFT	J.N.	L.G.	J.N.	
B	03.09.2014	AMENDED ISSUE	T.M.	L.G.	J.N.	
0	22.10.2014	CONSTRUCTION ISSUE	J.N.	L.G.	J.N.	L.G.
1	19.11.2014	AMENDED CONSTRUCTION ISSUE	J.N.	L.G.	J.N.	L.G.
2	07.04.2015	AMENDED CONSTRUCTION ISSUE	J.N.	L.G.	J.N.	L.G.
WAC	26.10.2015	WORK AS CONSTRUCTED - RAR	A.S.A.			B.K.



Hunter Office
Unit 7/335 Hillsborough Rd
Warners Bay N.S.W. 2282
Phone: (02) 4978 5100
Fax: (02) 4978 5199
email: hunter@adwjohnson.com.au
www.adwjohnson.com.au
ABN 62 129 445 398



PROPERTY DESCRIPTION
**PROPOSED SUBDIVISION
STAGE 1E WATAGAN PARK
McCULLOUGH STREET, COORANBONG
DA/573/2014**

PROJECT **POTABLE WATER, RECYCLED WATER AND
PRESSURE SEWER RETICULATION**

PLAN TITLE
**RECYCLED WATER DETAIL PLAN
SHEET 1**

SURVEYED
ADW Johnson

DATUM
A.H.D.

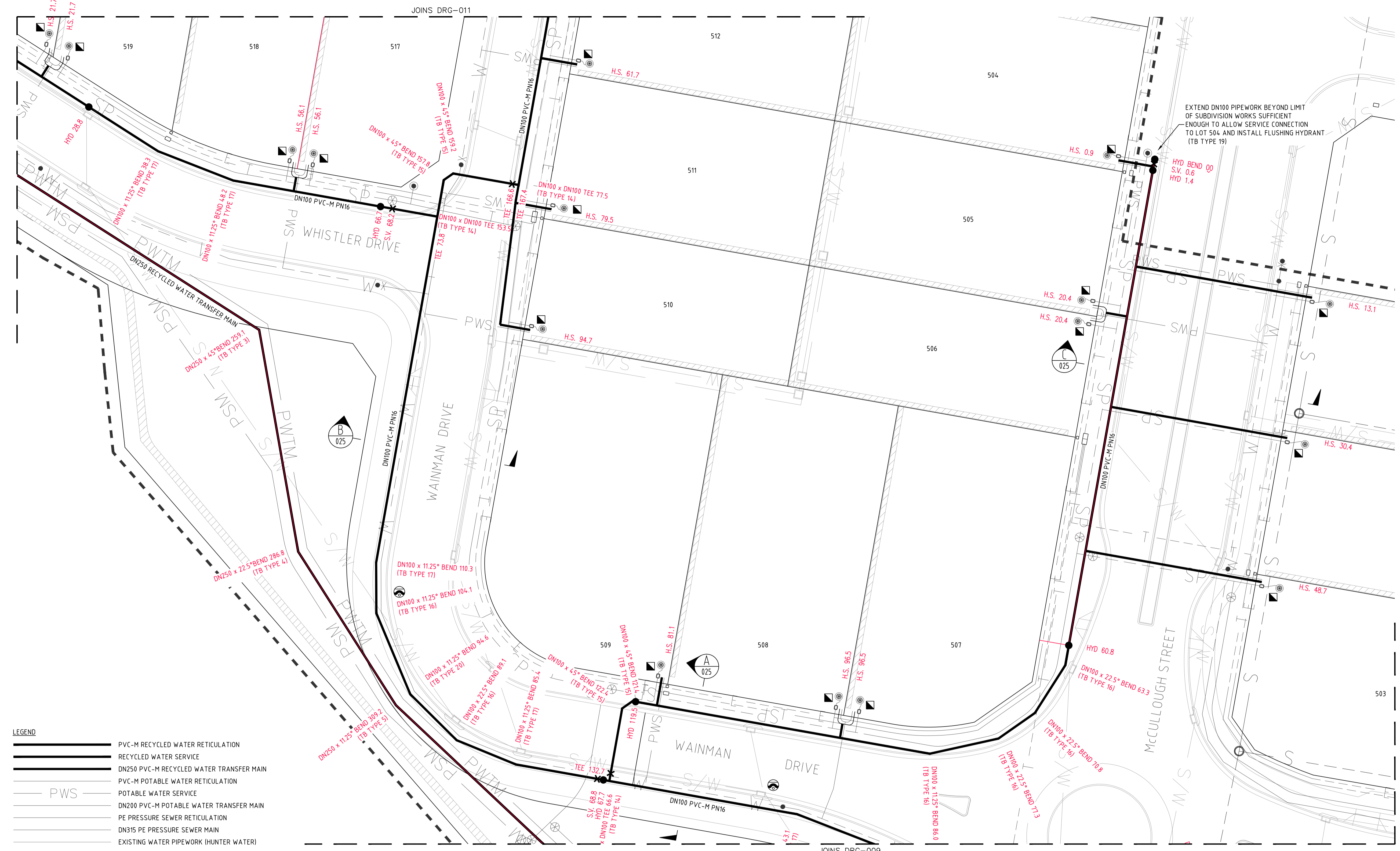
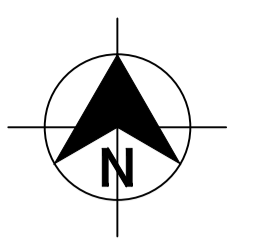
PROJECT No.
239078(1E)

DISCIPLINE
WAT

NUMBER
009

REV.
WAC

20-23647 1E RW WAC



EXTEND DN100 PIPEWORK BEYOND LIMIT OF SUBDIVISION WORKS SUFFICIENT ENOUGH TO ALLOW SERVICE CONNECTION TO LOT 504 AND INSTALL FLUSHING HYDRANT (TB TYPE 19)

LEGEND

	PVC-M RECYCLED WATER RETICULATION
	RECYCLED WATER SERVICE
	DN250 PVC-M RECYCLED WATER TRANSFER MAIN
	PVC-M POTABLE WATER RETICULATION
	POTABLE WATER SERVICE
	DN200 PVC-M POTABLE WATER TRANSFER MAIN
	PE PRESSURE SEWER RETICULATION
	DN315 PE PRESSURE SEWER MAIN
	EXISTING WATER PIPEWORK (HUNTER WATER)
	EXISTING SEWER PIPEWORK (HUNTER WATER)
	TELSTRA
	UNDERGROUND POWER
	STORMWATER PIPEWORK
	STOP VALVE
	HYDRANT
	SERVICE CONNECTION
	LAY WATER MAIN OVER STORMWATER PIPE (300mm MIN. VERTICAL CLEARANCE) - REFER TO WAT-1255-H
	LIMIT OF SUBDIVISION WORKS (STAGE 1E)

RECYCLED WATER SERVICE CONNECTIONS

TOTAL 20 CONNECTIONS

- SINGLE SERVICES IN ACCORDANCE WITH WAT-1106-V
 - 3 x SHORT SIDE
 - 3 x LONG SIDE
- SPLIT SERVICES IN ACCORDANCE WITH WAT-1107-V
 - 1 x SHORT SIDE
 - 6 x LONG SIDE

PLAN SCALE 1:250

PLAN SCALE 1:250

RECYCLED WATER PIPE DATA		
PIPE SIZE (mm)	PIPE MATERIAL	TOTAL LENGTH (m)
DN250	PVC-M PN16	198
DN100	PVC-M PN16	456

- NOTES:**
- FOR POTABLE WATER PIPEWORK DETAIL PLANS REFER TO DRGS-004 TO 006.
 - FOR PRESSURE SEWER PIPEWORK DETAIL PLANS REFER TO DRGS-014 TO 016.
 - FOR TYPICAL SERVICE CONNECTION DETAILS REFER TO DRG-022.

WORK-AS-CONSTRUCTED

REV.	DATE	AMENDMENT	DRAWN	CHECK	DESIGN	VERIFY	SCALES
A	20.08.2014	INITIAL DRAFT	J.N.	L.G.	J.N.		 A1 / A3 1:250 / 1:500
B	03.09.2014	AMENDED ISSUE	T.M.	L.G.	J.N.		
0	22.10.2014	CONSTRUCTION ISSUE	J.N.	L.G.	J.N.	L.G.	
1	19.11.2014	AMENDED CONSTRUCTION ISSUE	J.N.	L.G.	J.N.	L.G.	
2	07.04.2015	AMENDED CONSTRUCTION ISSUE	J.N.	L.G.	J.N.	L.G.	
WAC	26.10.2015	WORK AS CONSTRUCTED - RAR	A.S.A.		J.N.	B.K.	



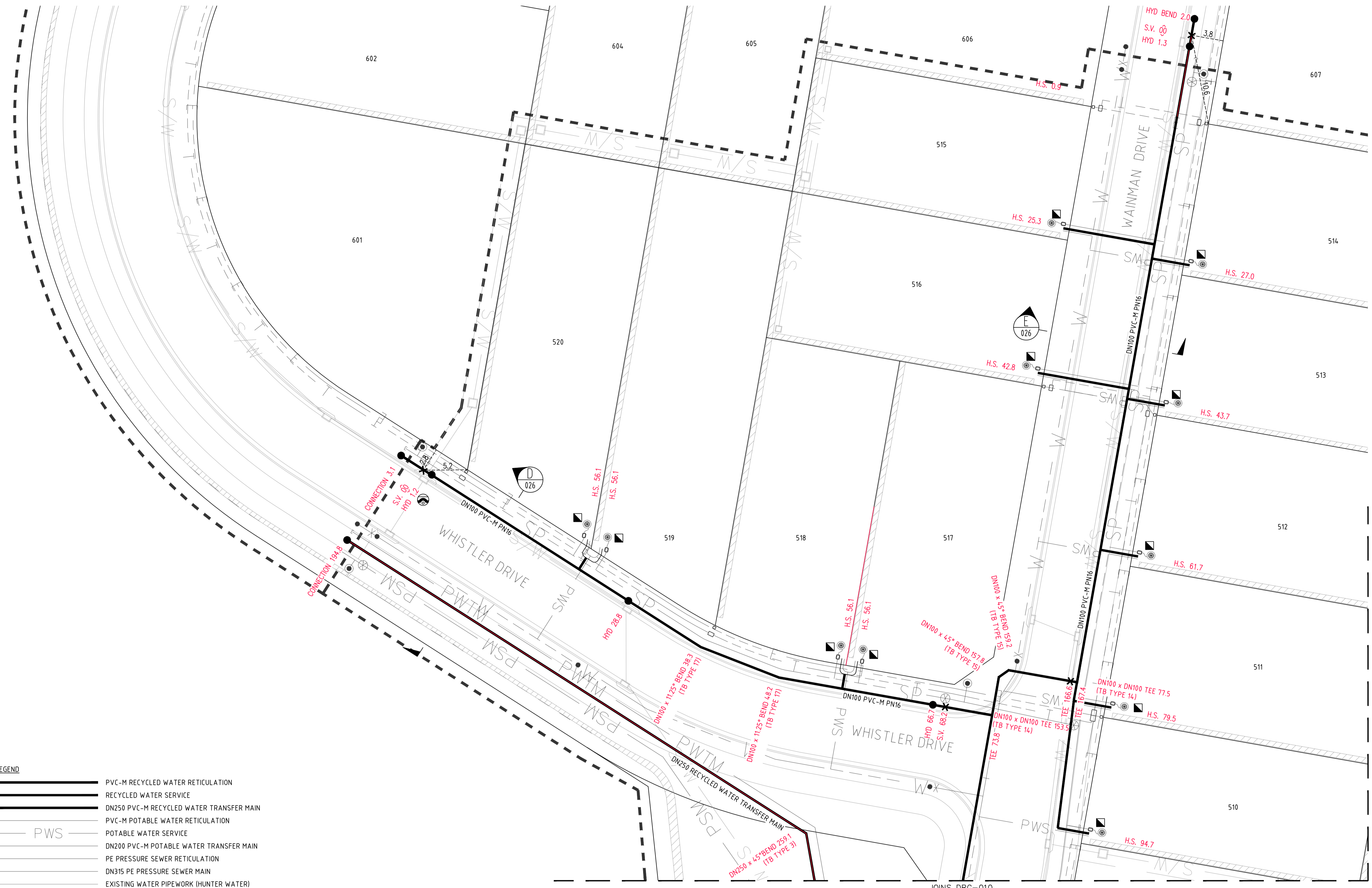
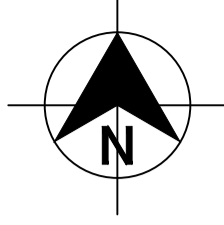
Hunter Office
 Unit 7/335 Hillsborough Rd
 Warners Bay N.S.W. 2282
 Phone: (02) 4978 5100
 Fax: (02) 4978 5199
 email: hunter@adwjohnson.com.au
 www.adwjohnson.com.au
 ABN 62 129 445 398



PROPERTY DESCRIPTION
**PROPOSED SUBDIVISION
 STAGE 1E WATAGAN PARK
 McCULLOUGH STREET, COORANBONG
 DA/573/2014**

PROJECT	POTABLE WATER, RECYCLED WATER AND PRESSURE SEWER RETICULATION		
PLAN TITLE	RECYCLED WATER DETAIL PLAN SHEET 2		
PROJECT No.	DISCIPLINE	NUMBER	REV.
239078(1E)	WAT	010	WAC

20-23647 1E RW WAC



PLAN
SCALE 1:250

- LEGEND**
- PVC-M RECYCLED WATER RETICULATION
 - RECYCLED WATER SERVICE
 - DN250 PVC-M RECYCLED WATER TRANSFER MAIN
 - PVC-M POTABLE WATER RETICULATION
 - POTABLE WATER SERVICE
 - DN200 PVC-M POTABLE WATER TRANSFER MAIN
 - PE PRESSURE SEWER RETICULATION
 - DN315 PE PRESSURE SEWER MAIN
 - EXISTING WATER PIPEWORK (HUNTER WATER)
 - EXISTING SEWER PIPEWORK (HUNTER WATER)
 - TELSTRA
 - UNDERGROUND POWER
 - STORMWATER PIPEWORK
 - SV. STOP VALVE
 - HYD. HYDRANT
 - SERVICE CONNECTION
 - LAY WATER MAIN OVER STORMWATER PIPE (300mm MIN. VERTICAL CLEARANCE) - REFER TO WAT-1255-H
 - LIMIT OF SUBDIVISION WORKS (STAGE 1E)

- RECYCLED WATER SERVICE CONNECTIONS**
TOTAL 20 CONNECTIONS
- SINGLE SERVICES IN ACCORDANCE WITH WAT-1106-V
 - 3 x SHORT SIDE
 - 3 x LONG SIDE
 - SPLIT SERVICES IN ACCORDANCE WITH WAT-1107-V
 - 1 x SHORT SIDE
 - 6 x LONG SIDE

RECYCLED WATER PIPE DATA		
PIPE SIZE (mm)	PIPE MATERIAL	TOTAL LENGTH (m)
DN250	PVC-M PN16	198
DN100	PVC-M PN16	456

- NOTES:**
- FOR POTABLE WATER PIPEWORK DETAIL PLANS REFER TO DRGS-004 TO 006.
 - FOR PRESSURE SEWER PIPEWORK DETAIL PLANS REFER TO DRGS-014 TO 016.
 - FOR TYPICAL SERVICE CONNECTION DETAILS REFER TO DRG-022.

REV.	DATE	AMENDMENT	DRAWN	CHECK	DESIGN	VERIFY
A	20.08.2014	INITIAL DRAFT	J.N.	L.G.	J.N.	
B	03.09.2014	AMENDED ISSUE	T.M.	L.G.	J.N.	
0	22.10.2014	CONSTRUCTION ISSUE	J.N.	L.G.	J.N.	L.G.
1	19.11.2014	AMENDED CONSTRUCTION ISSUE	J.N.	L.G.	J.N.	L.G.
2	07.04.2015	AMENDED CONSTRUCTION ISSUE	J.N.	L.G.	J.N.	L.G.
WAC	26.10.2015	WORK AS CONSTRUCTED - RAR	A.S.A.			B.K.



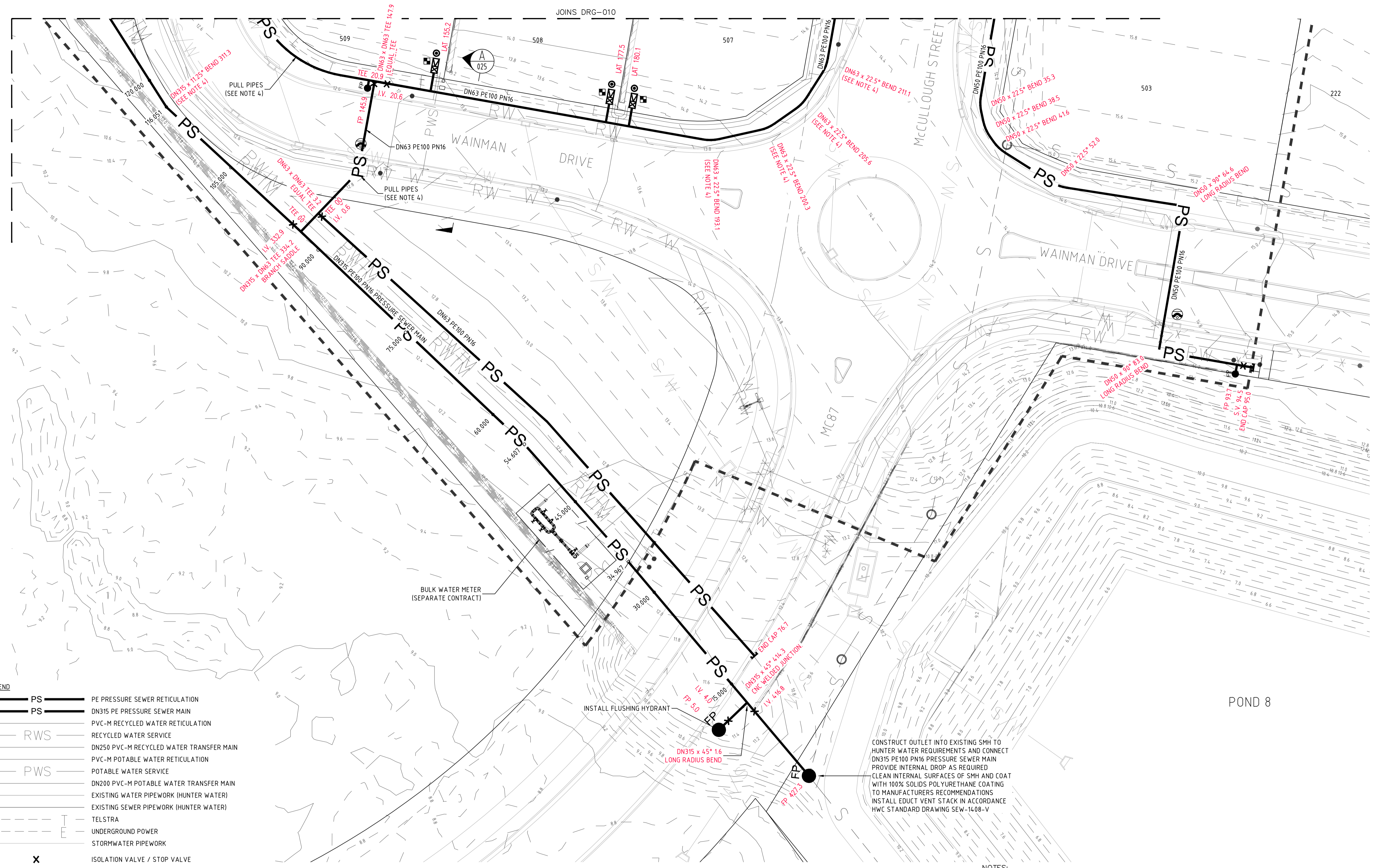
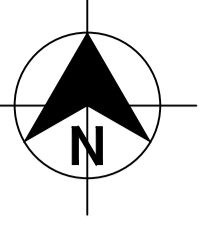
Hunter Office
Unit 7/335 Hillsborough Rd
Warners Bay N.S.W. 2282
Phone: (02) 4978 5100
Fax: (02) 4978 5199
email: hunter@adwjohnson.com.au
www.adwjohnson.com.au
ABN 62 129 445 398



PROPERTY DESCRIPTION
PROPOSED SUBDIVISION
STAGE 1E WATAGAN PARK
McCULLOUGH STREET, COORANBONG
DA/573/2014

PROJECT		DISCIPLINE		NUMBER	REV.
POTABLE WATER, RECYCLED WATER AND PRESSURE SEWER RETICULATION		WAT		011	WAC
PLAN TITLE		PROJECT No.			
RECYCLED WATER DETAIL PLAN SHEET 3		239078(1E)			
SURVEYED		DATUM			
ADW Johnson		A.H.D.			

WORK-AS-CONSTRUCTED



- LEGEND**
- PS PE PRESSURE SEWER RETICULATION
 - PS DN315 PE PRESSURE SEWER MAIN
 - PVC-M RECYCLED WATER RETICULATION
 - RWS RECYCLED WATER SERVICE
 - DN250 PVC-M RECYCLED WATER TRANSFER MAIN
 - PVC-M POTABLE WATER RETICULATION
 - PWS POTABLE WATER SERVICE
 - DN200 PVC-M POTABLE WATER TRANSFER MAIN
 - EXISTING WATER PIPEWORK (HUNTER WATER)
 - EXISTING SEWER PIPEWORK (HUNTER WATER)
 - TELSTRA
 - UNDERGROUND POWER
 - STORMWATER PIPEWORK
 - ISOLATION VALVE / STOP VALVE
 - FLUSHING POINT
 - WASTEWATER COLLECTION TANK AND BOUNDARY KIT
 - SERVICE CONNECTION
 - LAY WATER MAIN OVER STORMWATER PIPE (300mm MIN. VERTICAL CLEARANCE) - REFER TO WAT-1255-H
 - LAY WATER MAIN UNDER STORMWATER PIPE (300mm MIN. VERTICAL CLEARANCE) - REFER TO WAT-1255-H
 - LIMIT OF SUBDIVISION WORKS (STAGE 1E)

PRESSURE SEWER SERVICE CONNECTIONS
 TOTAL 20 CONNECTIONS
 • SINGLE SERVICES
 - 15 x SHORT SIDE
 - 5 x LONG SIDE

INSTALL FLUSHING HYDRANT

CONSTRUCT OUTLET INTO EXISTING SMH TO HUNTER WATER REQUIREMENTS AND CONNECT DN315 PE100 PN16 PRESSURE SEWER MAIN PROVIDE INTERNAL DROP AS REQUIRED CLEAN INTERNAL SURFACES OF SMH AND COAT WITH 100% SOLIDS POLYURETHANE COATING TO MANUFACTURERS RECOMMENDATIONS INSTALL EDUCT VENT STACK IN ACCORDANCE HWC STANDARD DRAWING SEW-1408-V

PLAN
 SCALE 1:250

PRESSURE SEWER PIPE DATA		
PIPE SIZE (mm)	PIPE MATERIAL	TOTAL LENGTH (m)
DN315	PE100 PN16	227
DN63	PE100 PN16	324
DN50	PE100 PN16	235

- NOTES:**
- FOR POTABLE WATER PIPEWORK DETAIL PLANS REFER TO DRGS-004 TO 006.
 - FOR RECYCLED WATER PIPEWORK DETAIL PLANS REFER TO DRGS-009 TO 011.
 - FOR TYPICAL SERVICE CONNECTION DETAILS REFER TO DRG-022.
 - CONTRACTOR MAY BEND POLYETHYLENE PIPEWORK IN PLACE OF USING STANDARD FITTINGS WITH A MIN. BENDING RADIUS OF 20 x PIPE DIAM.
 - ALL BENDS SHALL BE ELECTROFUSION SWEEP BENDS (FABRICATED BENDS SHALL NOT BE USED).
 - DN315 PE PRESSURE SEWER MAIN TO BE LAID TO GRADE.
 - FOR DN315 PRESSURE SEWER MAIN LONGITUDINAL SECTION REFER TO DRG-017.

WORK-AS-CONSTRUCTED

REV.	DATE	AMENDMENT	DRAWN	CHECK	DESIGN	VERIFY	SCALES
A	20.08.2014	INITIAL DRAFT	J.N.	L.G.	J.N.		 A1 / A3 1:250 / 1:500
B	03.09.2014	AMENDED ISSUE	T.M.	L.G.	J.N.		
0	22.10.2014	CONSTRUCTION ISSUE	J.N.	L.G.	J.N.	L.G.	
1	19.11.2014	AMENDED CONSTRUCTION ISSUE	J.N.	L.G.	J.N.	L.G.	
2	07.04.2015	AMENDED CONSTRUCTION ISSUE	J.N.	L.G.	J.N.	L.G.	
WAC	26.10.2015	WORK AS CONSTRUCTED - RAR	A.S.A.		J.N.	B.K.	

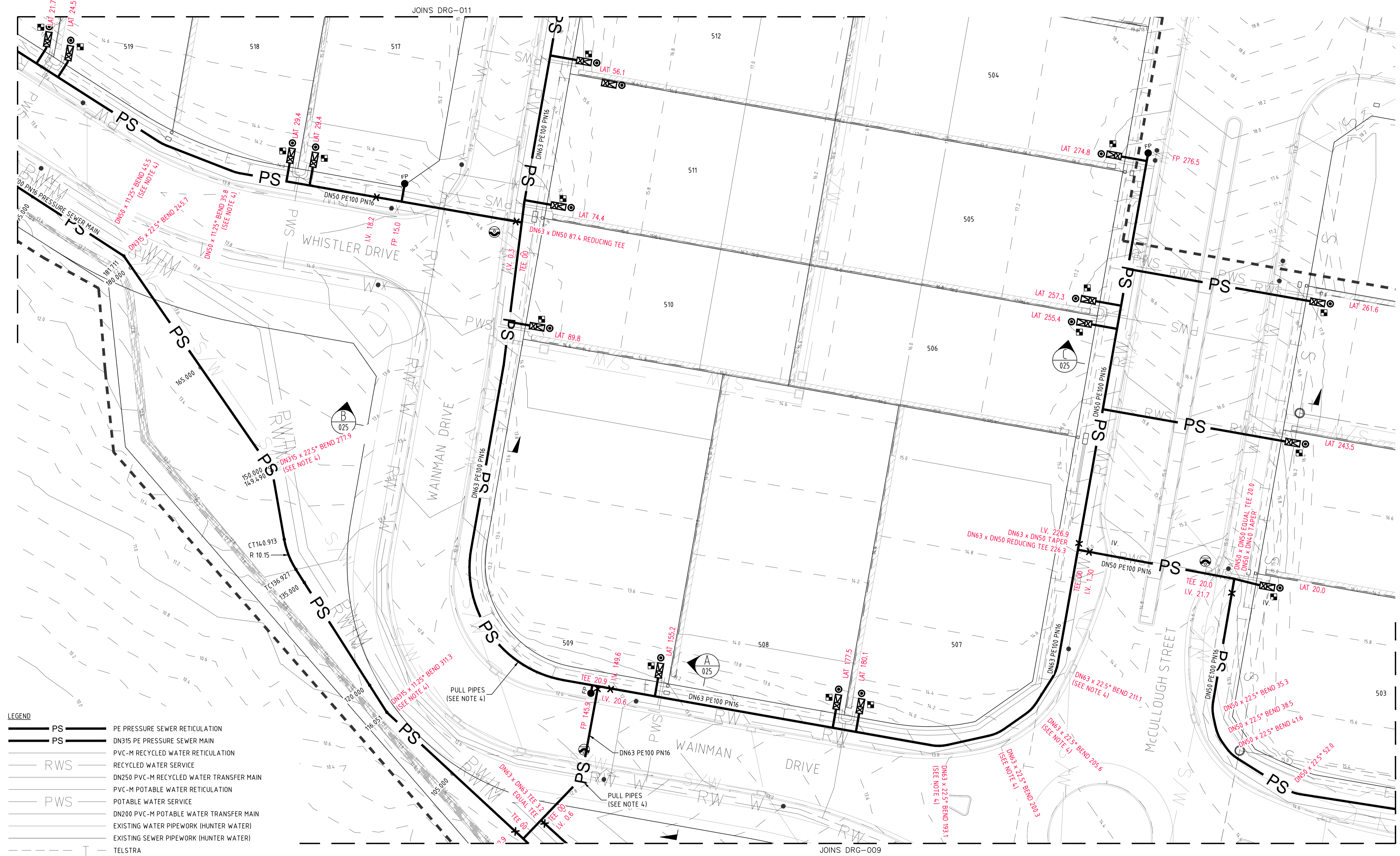
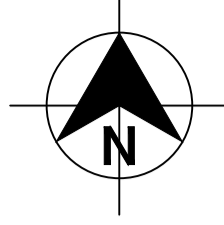
adw Johnson
 Hunter Office
 Unit 7/335 Hillsborough Rd
 Warners Bay N.S.W. 2282
 Phone: (02) 4978 5100
 Fax: (02) 4978 5199
 email: hunter@adwjohnson.com.au
 www.adwjohnson.com.au
 ABN 62 129 445 398

CLIENT

 JOHNSON PROPERTY GROUP

PROPERTY DESCRIPTION
 PROPOSED SUBDIVISION
 STAGE 1E WATAGAN PARK
 McCULLOUGH STREET, COORANBONG
 DA/573/2014

PROJECT	PLAN TITLE	PROJECT No.	DISCIPLINE	NUMBER	REV.
POTABLE WATER, RECYCLED WATER AND PRESSURE SEWER RETICULATION	PRESSURE SEWER DETAIL PLAN SHEET 1	239078(1E)	WAT	014	WAC



LEGEND

PS	PE PRESSURE SEWER RETICULATION
PS	DN315 PE PRESSURE SEWER MAIN
PS	PVC-M RECYCLED WATER RETICULATION
RWS	RECYCLED WATER SERVICE
RWS	DN250 PVC-M RECYCLED WATER TRANSFER MAIN
PWS	PVC-M POTABLE WATER RETICULATION
PWS	DN200 PVC-M POTABLE WATER TRANSFER MAIN
---	EXISTING WATER PIPEWORK (HUNTER WATER)
---	EXISTING SEWER PIPEWORK (HUNTER WATER)
---	TELSTRA
---	UNDERGROUND POWER
---	STORMWATER PIPEWORK
X	ISOLATION VALVE / STOP VALVE
●	FLUSHING POINT
⊠	WASTEWATER COLLECTION TANK AND BOUNDARY KIT
⊠	SERVICE CONNECTION
⊠	LAY WATER MAIN OVER STORMWATER PIPE (300mm MIN. VERTICAL CLEARANCE) - REFER TO WAT-1255-H
⊠	LAY WATER MAIN UNDER STORMWATER PIPE (300mm MIN. VERTICAL CLEARANCE) - REFER TO WAT-1255-H
---	LIMIT OF SUBDIVISION WORKS (STAGE 1E)

PLAN
SCALE 1:250

PRESSURE SEWER PIPE DATA		
PIPE SIZE (mm)	PIPE MATERIAL	TOTAL LENGTH (m)
DN315	PE100 PN16	227
DN63	PE100 PN16	324
DN50	PE100 PN16	235

- NOTES:**
- FOR POTABLE WATER PIPEWORK DETAIL PLANS REFER TO DRGS-004 TO 006.
 - FOR RECYCLED WATER PIPEWORK DETAIL PLANS REFER TO DRGS-009 TO 011.
 - FOR TYPICAL SERVICE CONNECTION DETAILS REFER TO DRG-022.
 - CONTRACTOR MAY BEND POLYETHYLENE PIPEWORK IN PLACE OF USING STANDARD FITTINGS WITH A MIN. BENDING RADIUS OF 20 x PIPE DIAM.
 - ALL BENDS SHALL BE ELECTROFUSION SWEEP BENDS (FABRICATED BENDS SHALL NOT BE USED).
 - DN315 PE PRESSURE SEWER MAIN TO BE LAID TO GRADE.
 - FOR DN315 PRESSURE SEWER MAIN LONGITUDINAL SECTION REFER TO DRG-017.

WORK-AS-CONSTRUCTED

REV.	DATE	AMENDMENT	DRAWN	CHECK	DESIGN	VERIFY	SCALES
A	20.08.2014	INITIAL DRAFT	J.N.	L.G.	J.N.		
B	03.09.2014	AMENDED ISSUE	T.M.	L.G.	J.N.		
0	22.10.2014	CONSTRUCTION ISSUE	J.N.	L.G.	J.N.	L.G.	
1	19.11.2014	AMENDED CONSTRUCTION ISSUE	J.N.	L.G.	J.N.	L.G.	
2	07.04.2015	AMENDED CONSTRUCTION ISSUE	J.N.	L.G.	J.N.	L.G.	
WAC	26.10.2015	WORK AS CONSTRUCTED - RAR	A.S.A.		J.N.	B.K.	

adw Johnson

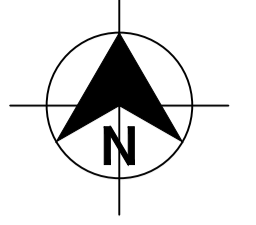
Hunter Office
Unit 7/335 Hillsborough Rd
Warners Bay N.S.W. 2282
Phone: (02) 4978 5100
Fax: (02) 4978 5199
email: hunter@adwjohnson.com.au
www.adwjohnson.com.au
ABN 62 129 445 398

JOHNSON PROPERTY GROUP

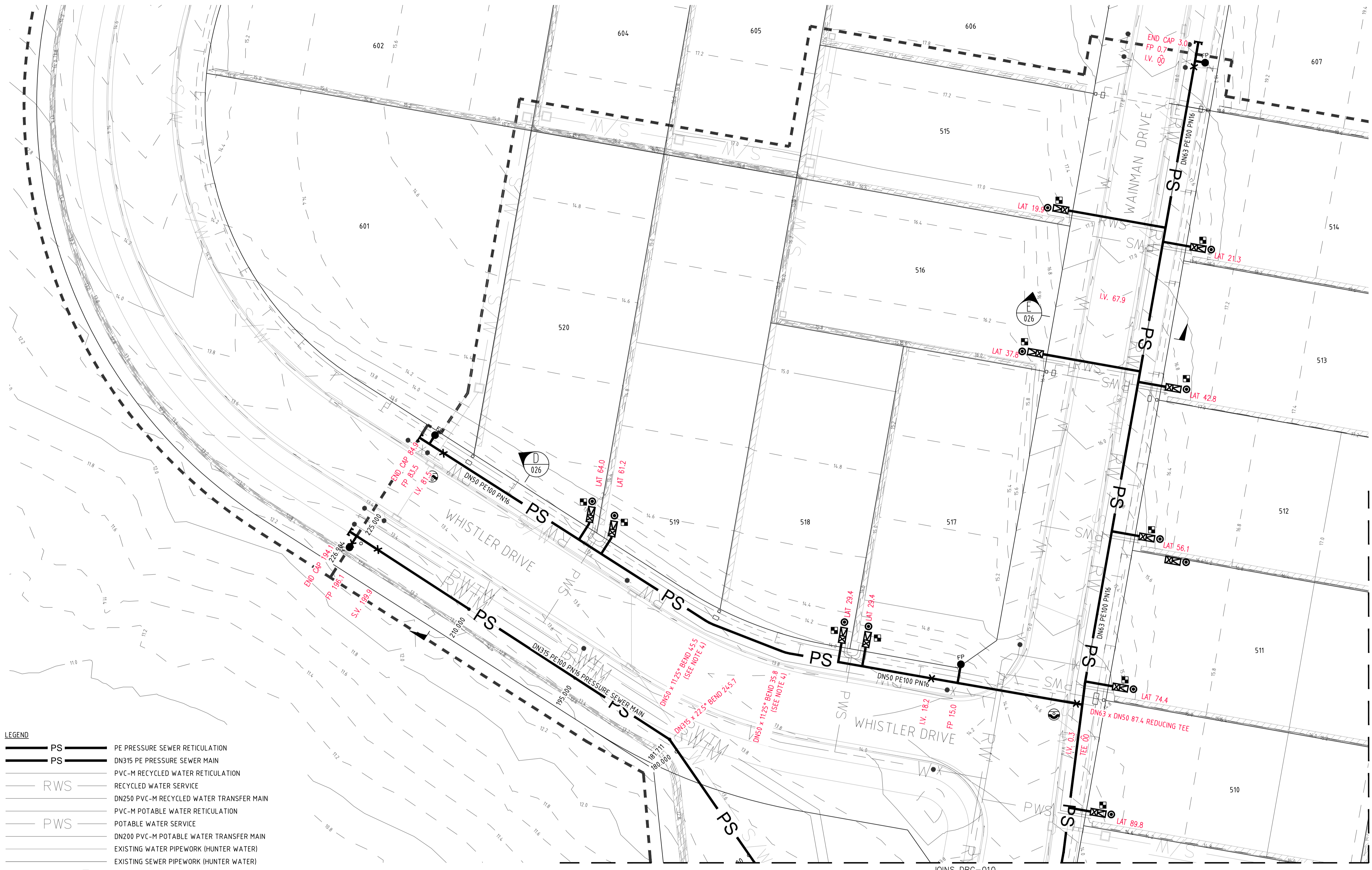
PROPERTY DESCRIPTION

PROPOSED SUBDIVISION
STAGE 1E WATAGAN PARK
McCULLOUGH STREET, COORANBONG
DA/573/2014

PROJECT	POTABLE WATER, RECYCLED WATER AND PRESSURE SEWER RETICULATION		
PLAN TITLE	PRESSURE SEWER DETAIL PLAN SHEET 2		
PROJECT No.	DISCIPLINE	NUMBER	REV.
239078(1E)	WAT	015	WAC



DIAL 1100
BEFORE YOU DIG



PLAN
SCALE 1:250

- LEGEND**
- PS PE PRESSURE SEWER RETICULATION
 - PS DN315 PE PRESSURE SEWER MAIN
 - PVC-M RECYCLED WATER RETICULATION
 - RWS RECYCLED WATER SERVICE
 - DN250 PVC-M RECYCLED WATER TRANSFER MAIN
 - PVC-M POTABLE WATER RETICULATION
 - PWS POTABLE WATER SERVICE
 - DN200 PVC-M POTABLE WATER TRANSFER MAIN
 - EXISTING WATER PIPEWORK (HUNTER WATER)
 - EXISTING SEWER PIPEWORK (HUNTER WATER)
 - TELSTRA
 - UNDERGROUND POWER
 - STORMWATER PIPEWORK
 - X ISOLATION VALVE / STOP VALVE
 - FLUSHING POINT
 - WASTEWATER COLLECTION TANK AND BOUNDARY KIT
 - SERVICE CONNECTION
 - LAY WATER MAIN OVER STORMWATER PIPE (300mm MIN. VERTICAL CLEARANCE) - REFER TO WAT-1255-H
 - LAY WATER MAIN UNDER STORMWATER PIPE (300mm MIN. VERTICAL CLEARANCE) - REFER TO WAT-1255-H
 - LIMIT OF SUBDIVISION WORKS (STAGE 1E)

■ PRESSURE SEWER SERVICE CONNECTIONS
TOTAL 20 CONNECTIONS
• SINGLE SERVICES
- 15 x SHORT SIDE
- 5 x LONG SIDE

PRESSURE SEWER PIPE DATA		
PIPE SIZE (mm)	PIPE MATERIAL	TOTAL LENGTH (m)
DN315	PE100 PN16	227
DN63	PE100 PN16	324
DN50	PE100 PN16	235

- NOTES:**
- FOR POTABLE WATER PIPEWORK DETAIL PLANS REFER TO DRGS-004 TO 006.
 - FOR RECYCLED WATER PIPEWORK DETAIL PLANS REFER TO DRGS-009 TO 011.
 - FOR TYPICAL SERVICE CONNECTION DETAILS REFER TO DRG-022.
 - CONTRACTOR MAY BEND POLYETHYLENE PIPEWORK IN PLACE OF USING STANDARD FITTINGS WITH A MIN. BENDING RADIUS OF 20 x PIPE DIAM.
 - ALL BENDS SHALL BE ELECTROFUSION SWEEP BENDS (FABRICATED BENDS SHALL NOT BE USED).
 - DN315 PE PRESSURE SEWER MAIN TO BE LAID TO GRADE.
 - FOR DN315 PRESSURE SEWER MAIN LONGITUDINAL SECTION REFER TO DRG-017.

WORK-AS-CONSTRUCTED

REV.	DATE	AMENDMENT	DRAWN	CHECK	DESIGN	VERIFY
A	20.08.2014	INITIAL DRAFT	J.N.	L.G.	J.N.	
B	03.09.2014	AMENDED ISSUE	T.M.	L.G.	J.N.	
0	22.10.2014	CONSTRUCTION ISSUE	J.N.	L.G.	J.N.	L.G.
1	19.11.2014	AMENDED CONSTRUCTION ISSUE	J.N.	L.G.	J.N.	L.G.
2	07.04.2015	AMENDED CONSTRUCTION ISSUE	J.N.	L.G.	J.N.	L.G.
WAC	26.10.2015	WORK AS CONSTRUCTED - RAR	A.S.A.		J.N.	B.K.

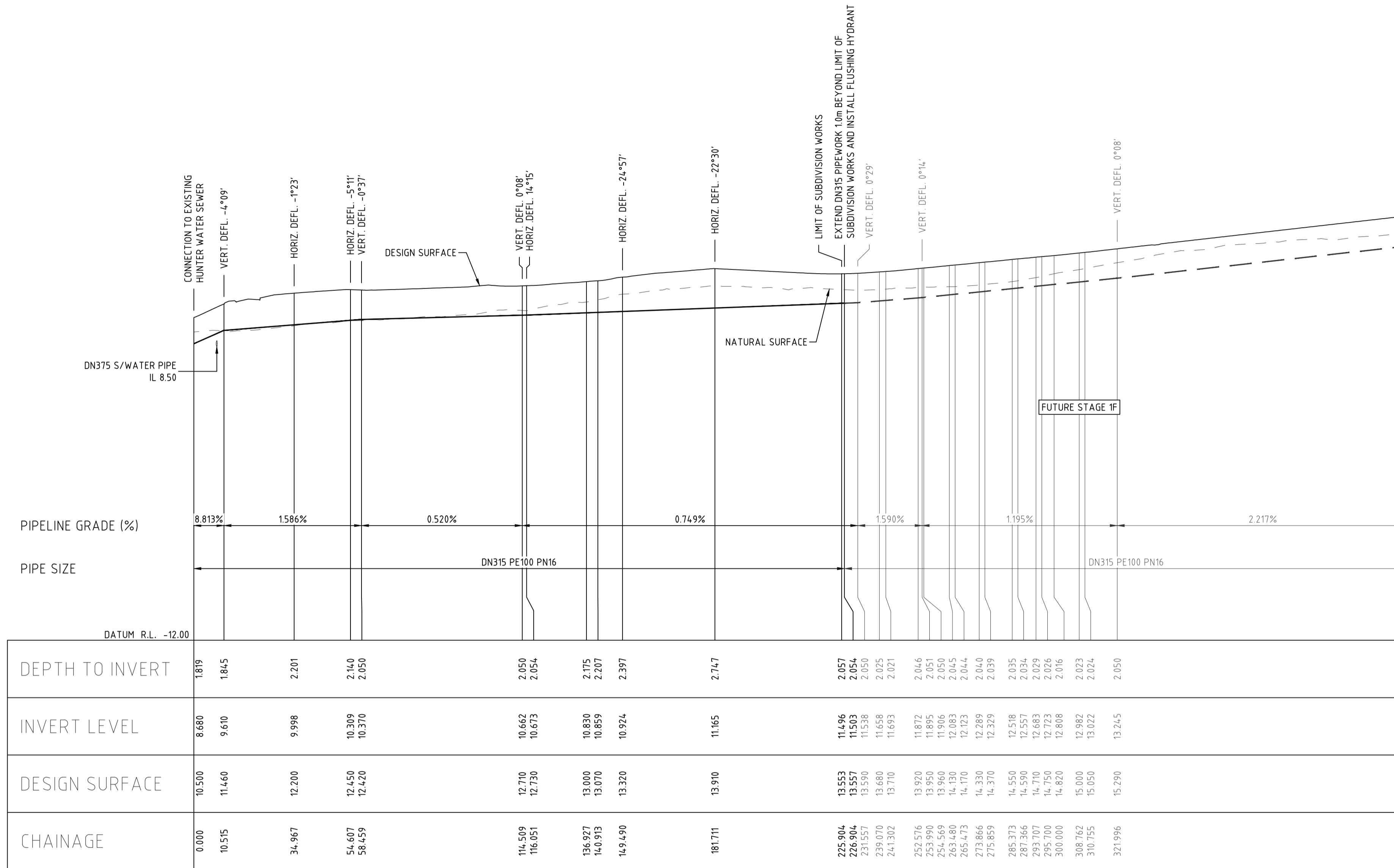


Hunter Office
Unit 7/335 Hillsborough Rd
Warners Bay N.S.W. 2282
Phone: (02) 4978 5100
Fax: (02) 4978 5199
email: hunter@adwjohnson.com.au
www.adwjohnson.com.au
ABN 62 129 445 398



CLIENT
PROPERTY DESCRIPTION
**PROPOSED SUBDIVISION
STAGE 1E WATAGAN PARK
McCULLOUGH STREET, COORANBONG
DA/573/2014**

PROJECT	POTABLE WATER, RECYCLED WATER AND PRESSURE SEWER RETICULATION		
PLAN TITLE	PRESSURE SEWER DETAIL PLAN SHEET 3		
PROJECT No.	DISCIPLINE	NUMBER	REV.
239078(1E)	WAT	016	WAC

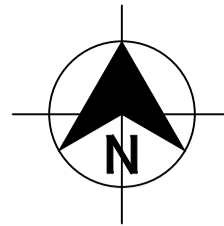


LONGITUDINAL SECTION - DN315 PRESSURE SEWER MAIN

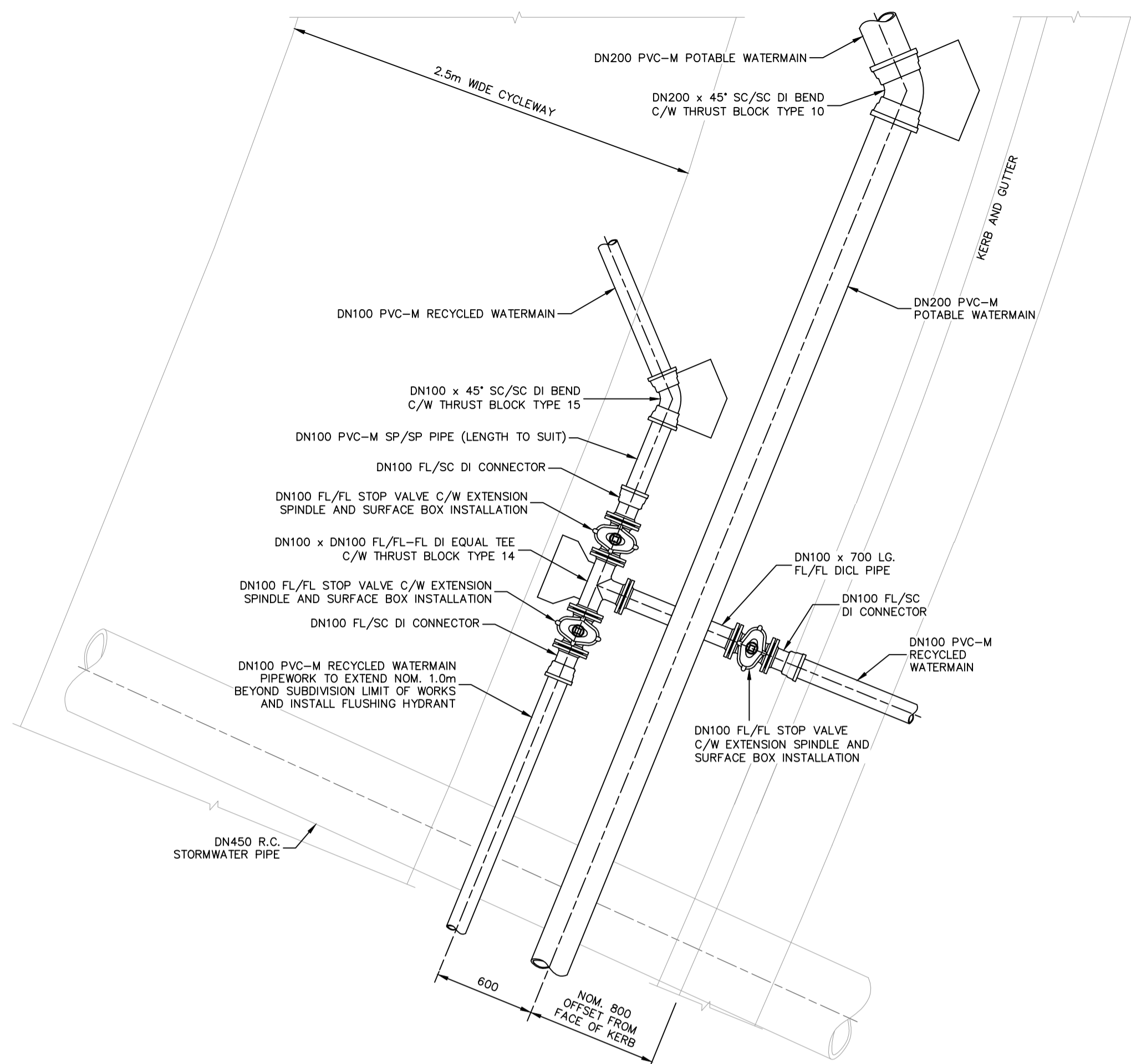
HORIZONTAL SCALE 1:1000
VERTICAL SCALE 1:200

WORK-AS-CONSTRUCTED

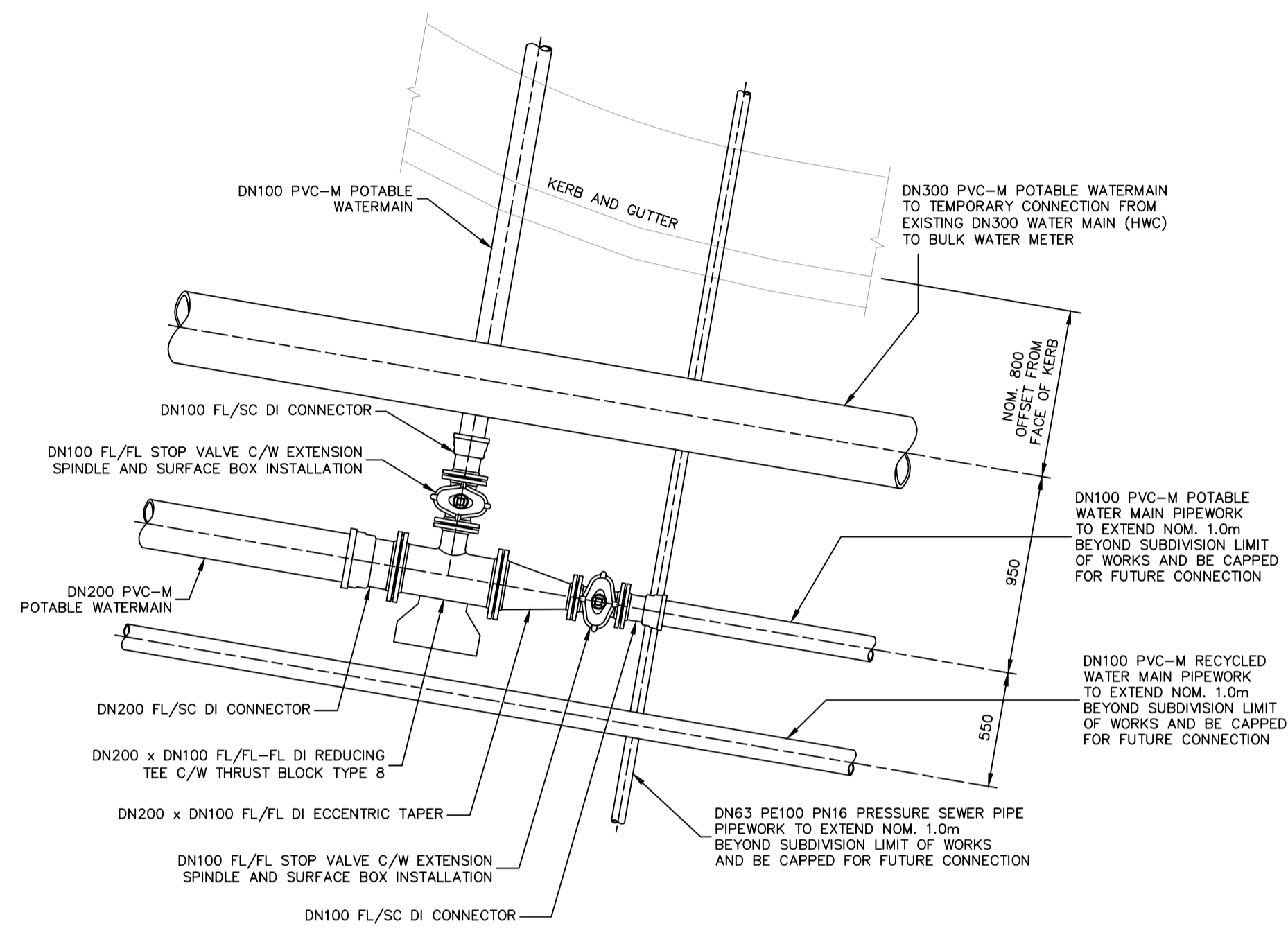
REV.	DATE	AMENDMENT	DRAWN	CHECK	DESIGN	VERIFY	SCALES		CLIENT 	PROPERTY DESCRIPTION PROPOSED SUBDIVISION STAGE 1E WATAGAN PARK McCULLOUGH STREET, COORANBONG DA/573/2014	PROJECT POTABLE WATER, RECYCLED WATER AND PRESSURE SEWER RETICULATION			
							VERT				HORIZ	PLAN TITLE PRESSURE SEWER MAIN LONGITUDINAL SECTION		
A	20.08.2014	INITIAL DRAFT	J.N.	L.G.	J.N.		1:200 / 1:400				PROJECT No.	DISCIPLINE	NUMBER	REV.
B	03.09.2014	AMENDED ISSUE	T.M.	L.G.	J.N.		1:1000 / 1:2000				239078(1E)	WAT	017	WAC
0	22.10.2014	CONSTRUCTION ISSUE	J.N.	L.G.	J.N.	L.G.								
1	19.11.2014	AMENDED CONSTRUCTION ISSUE	J.N.	L.G.	J.N.	L.G.								
2	07.04.2015	AMENDED CONSTRUCTION ISSUE	J.N.	L.G.	J.N.	L.G.								
WAC	26.10.2015	WORK AS CONSTRUCTED - RAR	A.S.A.		J.N.	B.K.								



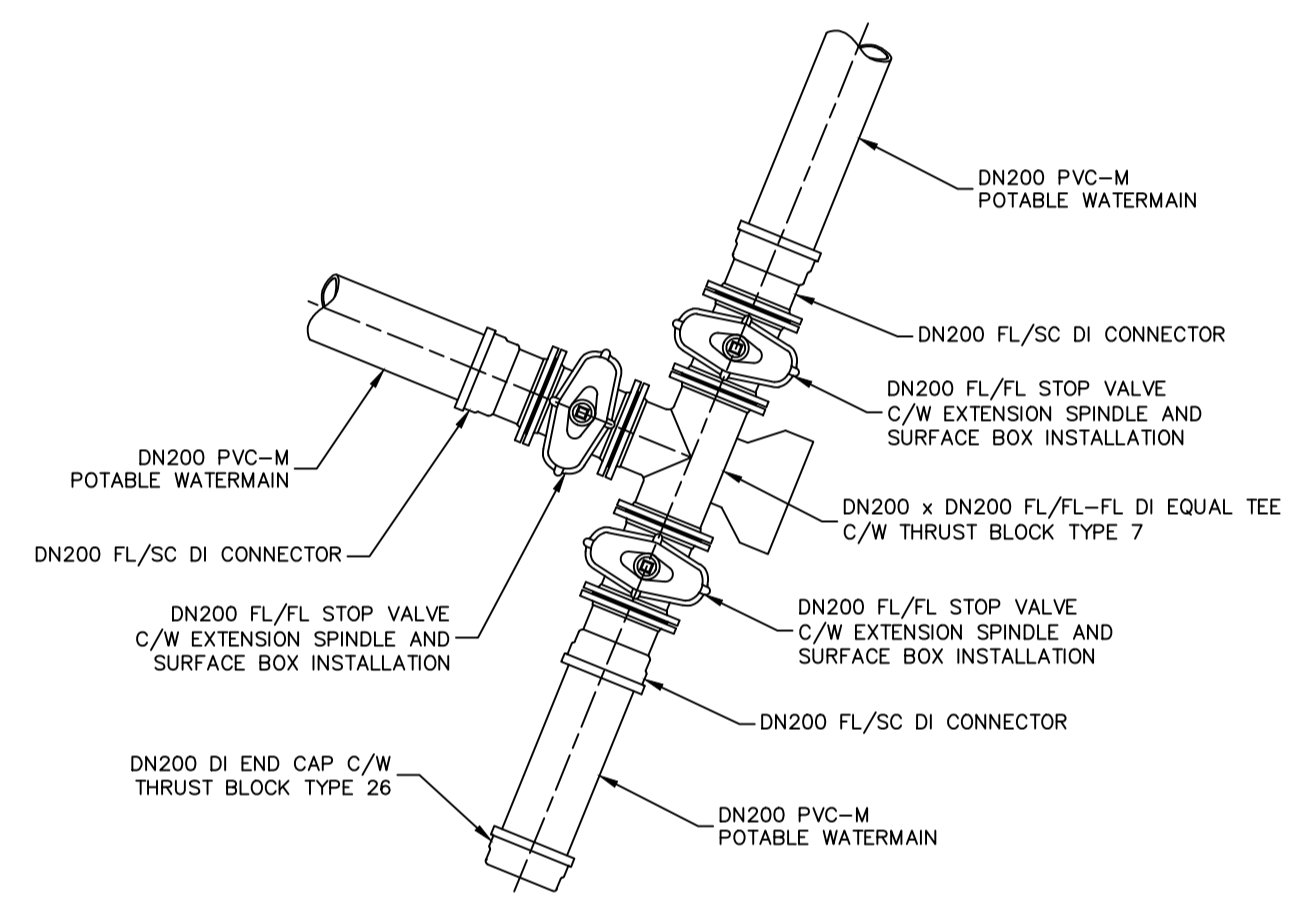
DIAL 1100
BEFORE YOU DIG



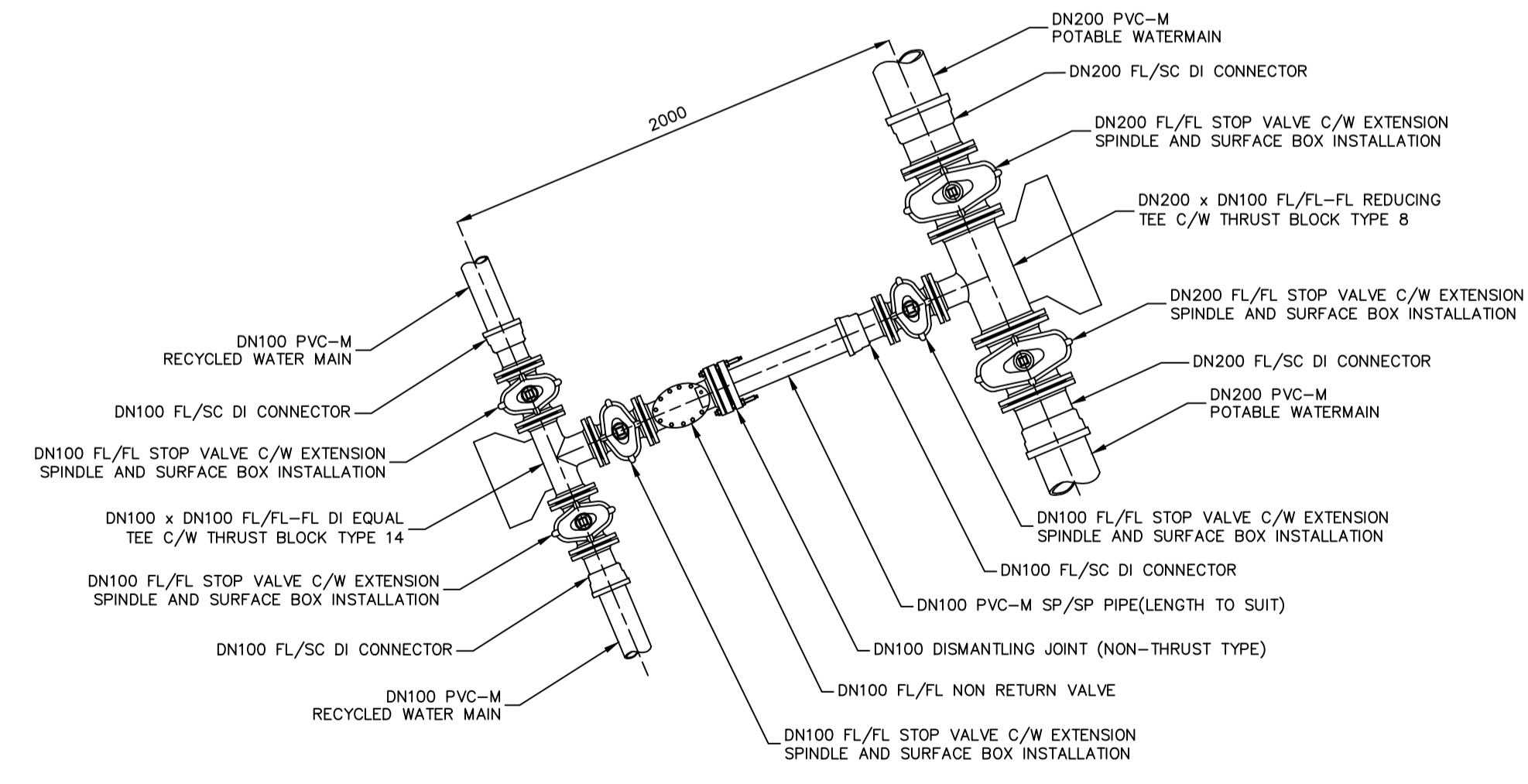
DETAIL 1
SCALE 1:20



DETAIL 3
SCALE 1:20

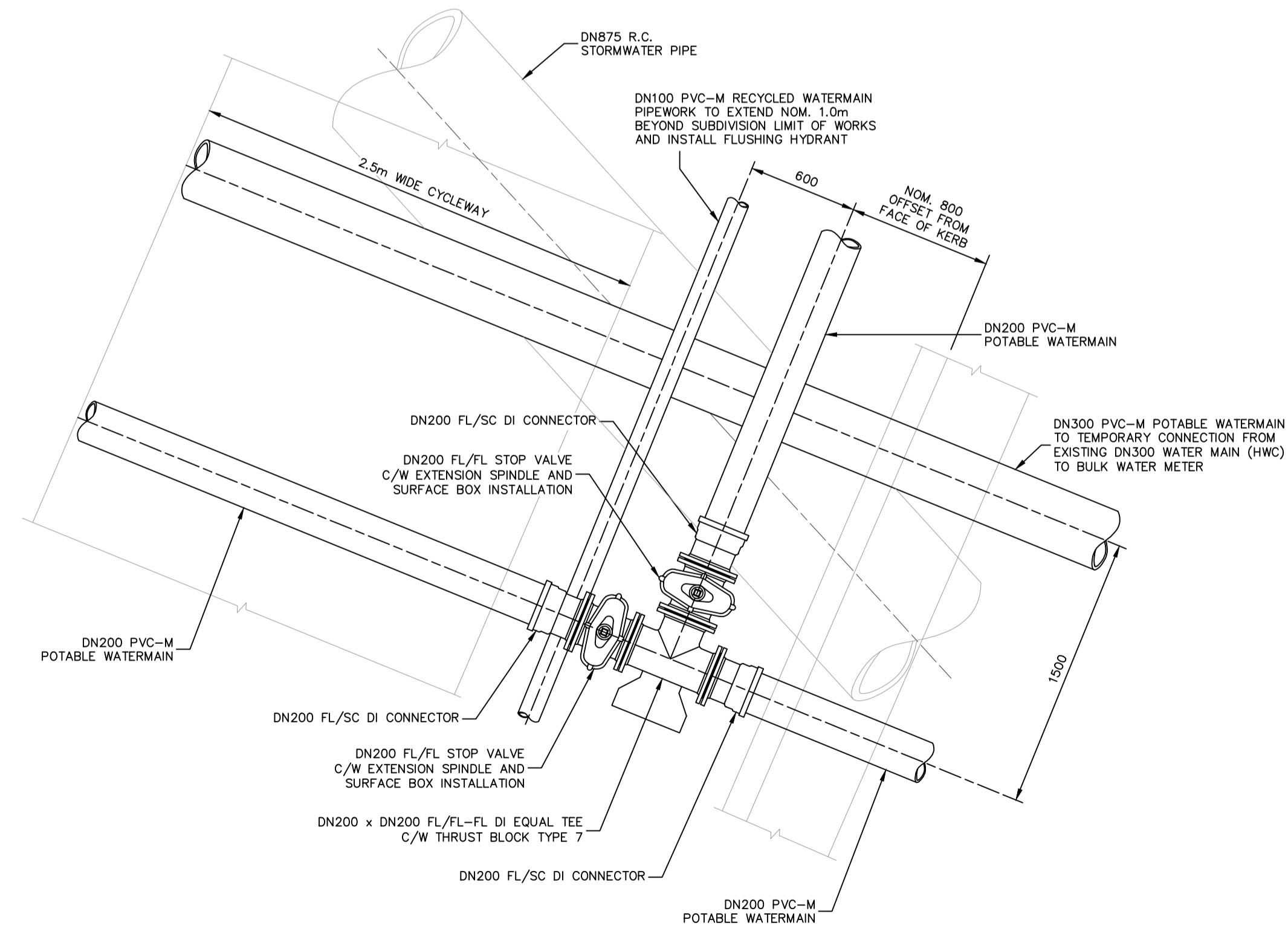


DETAIL 5
SCALE 1:20



DETAIL 2 - TEMPORARY POTABLE WATER/RECYCLED WATER CROSS CONNECTION
SCALE 1:20

NOTE:
UPON AVAILABILITY OF RECYCLED WATER SERVICE, TEMPORARY CONNECTION BETWEEN RECYCLED WATER AND POTABLE WATER IS TO BE REMOVED TO COMPLY WITH NSW HEALTH LICENSING REQUIREMENTS.



DETAIL 4
SCALE 1:20

WORK-AS-CONSTRUCTED

100mm AT FULL SIZE

REV.	DATE	AMENDMENT	DRAWN	CHECK	DESIGN	VERIFY	SCALES
A	20.08.2014	INITIAL DRAFT	J.N.	L.G.	J.N.		 A1 / A3 1:25 / 1:50
B	03.09.2014	AMENDED ISSUE	T.M.	L.G.	J.N.		
0	22.10.2014	CONSTRUCTION ISSUE	J.N.	L.G.	J.N.	L.G.	
1	19.11.2014	AMENDED CONSTRUCTION ISSUE	J.N.	L.G.	J.N.	L.G.	
2	07.04.2015	AMENDED CONSTRUCTION ISSUE	J.N.	L.G.	J.N.	L.G.	
3	15.04.2015	AMENDED CONSTRUCTION ISSUE	J.N.	L.G.	J.N.	L.G.	

ALL DIMENSIONS ARE IN METRES. DO NOT SCALE

Hunter Office
Unit 7/335 Hillsborough Rd
Warners Bay N.S.W. 2282
Phone: (02) 4978 5100
Fax: (02) 4978 5199
email: hunter@adwjohnson.com.au
www.adwjohnson.com.au
ABN 62 129 445 398

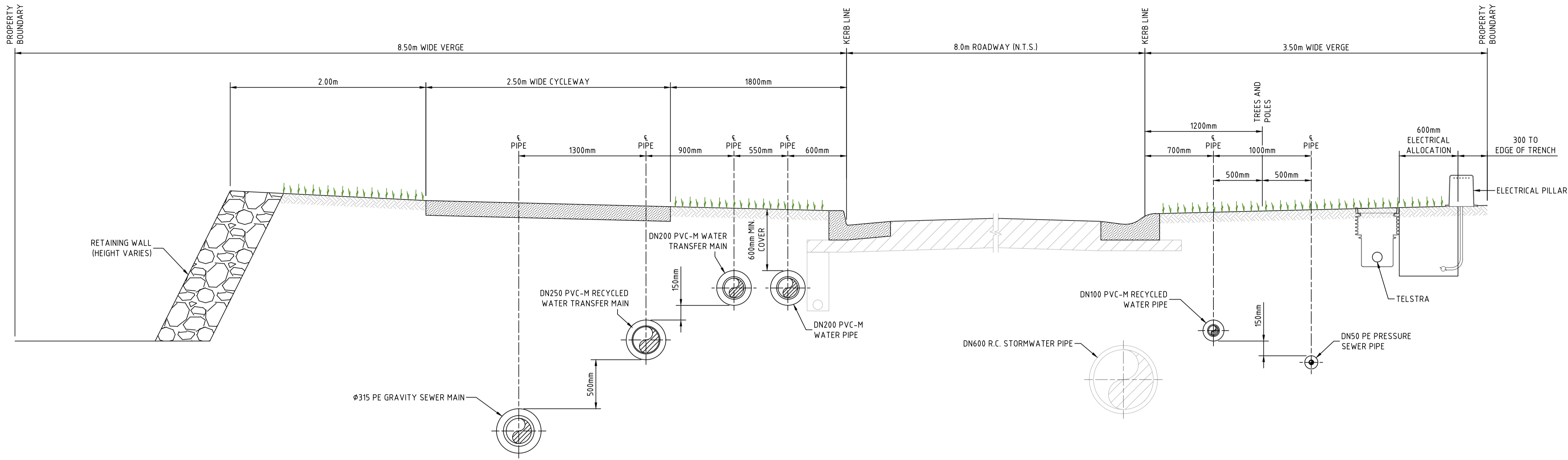
CLIENT

JOHNSON PROPERTY GROUP

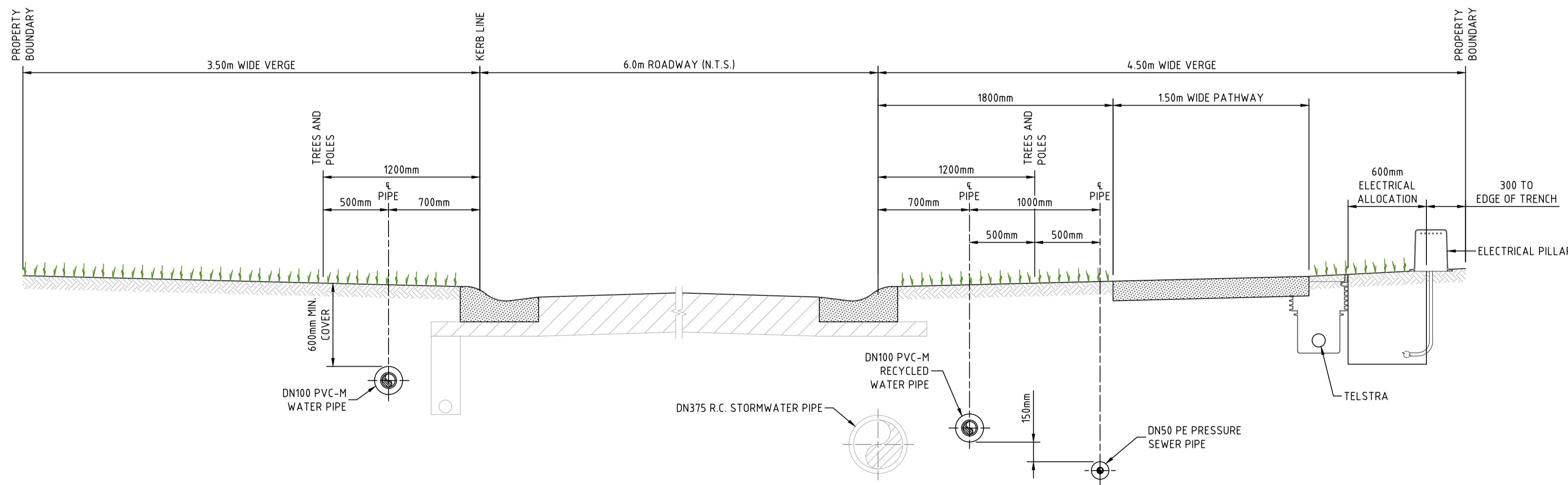
PROPERTY DESCRIPTION

PROPOSED SUBDIVISION
STAGE 1E WATAGAN PARK
McCULLOUGH STREET, COORANBONG
DA/573/2014

PROJECT	POTABLE WATER, RECYCLED WATER AND PRESSURE SEWER RETICULATION		
PLAN TITLE	PIPEWORK CONNECTION DETAILS		
PROJECT No.	DISCIPLINE	NUMBER	REV.
239078(1E)	WAT	019	WAC
SURVEYED	DATUM		
ADW Johnson	A.H.D.		



SECTION **D D D**
006 011 016
SCALE 1:25



SECTION **E E E**
006 011 016
SCALE 1:25

NOTE:
1. FOR MINIMUM VERTICAL AND HORIZONTAL CLEARANCES REFER TO WATER SUPPLY CODE OF AUSTRALIA WSA 03-2002-2.3, TABLE 4.1 (HUNTER WATER EDITION VERSION 1).

WORK-AS-CONSTRUCTED

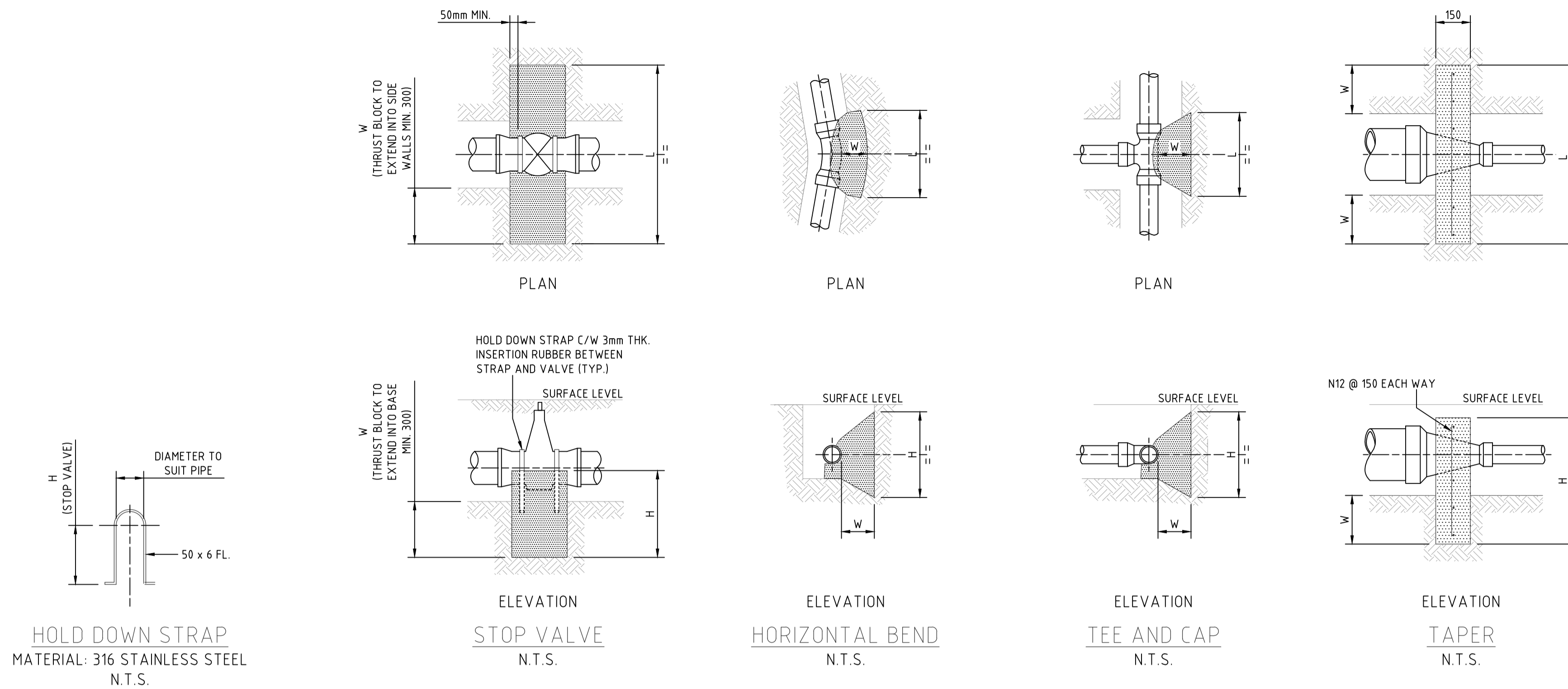
REV.	DATE	AMENDMENT	DRAWN	CHECK	DESIGN	VERIFY	SCALES
A	20.08.2014	INITIAL DRAFT	J.N.	L.G.	J.N.		
B	03.09.2014	AMENDED ISSUE	T.M.	L.G.	J.N.		
0	22.10.2014	CONSTRUCTION ISSUE	J.N.	L.G.	J.N.	L.G.	
1	19.11.2014	AMENDED CONSTRUCTION ISSUE	J.N.	L.G.	J.N.	L.G.	
2	07.04.2015	AMENDED CONSTRUCTION ISSUE	J.N.	L.G.	J.N.	L.G.	
WAC	27.10.2015	WORK AS CONSTRUCTED - RAR	A.S.A.		J.N.	B.K.	

adw Johnson
Hunter Office
Unit 7/335 Hillsborough Rd
Warners Bay N.S.W. 2282
Phone: (02) 4978 5100
Fax: (02) 4978 5199
email: hunter@adwjohnson.com.au
www.adwjohnson.com.au
ABN 62 129 445 398

JOHNSON PROPERTY GROUP

PROPERTY DESCRIPTION
**PROPOSED SUBDIVISION
STAGE 1E WATAGAN PARK
McCULLOUGH STREET, COORANBONG
DA/573/2014**

PROJECT	POTABLE WATER, RECYCLED WATER AND PRESSURE SEWER RETICULATION		
PLAN TITLE	ROAD CROSS SECTIONS SHEET 2		
PROJECT No.	DISCIPLINE	NUMBER	REV.
239078(1E)	WAT	026	WAC



SERVICE PRESSURE (ALL PROPERTIES) = STANDARD (20m-60m)

TYPE	FITTING	Soil AHBp (Kpa)	Design STP (Kpa)	Thrust	TA (m2)	Length (L)	Height (H)	Width (W)
1	DN315 Flushing Hydrant	100	1000	94.00	0.94	1.00	0.94	0.40
2	DN300 x DN100 Taper	100	1000	82.00	0.82	1.55	0.69	0.40
3	DN250 x 45° Bend	100	1000	51.00	0.51	0.75	0.68	0.40
4	DN250 x 22.5° Bend	100	1000	26.00	0.26	0.55	0.47	0.40
5	DN250 x 11.25° Bend	100	1000	13.00	0.13	0.40	0.33	0.40
6	DN250 Flushing Hydrant	100	1000	65.00	0.65	0.90	0.72	0.40
7	DN200 x DN200 Tee	100	1000	43.00	0.43	0.70	0.61	0.30
8	DN200 x DN100 Tee	100	1000	12.00	0.12	0.40	0.30	0.30
9	DN200 x DN100 Taper	100	1000	31.00	0.31	1.20	0.55	0.30
10	DN200 x 45° Bend	100	1000	33.00	0.33	0.60	0.55	0.30
11	DN200 x 22.5° Bend	100	1000	17.00	0.17	0.45	0.38	0.30
12	DN200 x 11.25° Bend	100	1000	8.10	0.08	0.30	0.30	0.30
13	DN200 Stop Valve	100	1000	43.00	0.43	1.20	0.55	0.30
13	DN200 Flushing Hydrant	100	1000	43.00	0.43	0.70	0.61	0.30
14	DN100 x DN100 Tee	100	1000	12.00	0.12	0.40	0.30	0.30
15	DN100 x 45° Bend	100	1000	8.80	0.09	0.30	0.30	0.30
16	DN100 x 22.5° Bend	100	1000	4.50	0.05	0.30	0.30	0.30
17	DN100 x 11.25° Bend	100	1000	2.20	0.02	0.30	0.30	0.30
18	DN100 Stop Valve	100	1000	12.00	0.12	1.05	0.49	0.30
19	DN100 Flushing Hydrant	100	1000	12.00	0.12	0.40	0.30	0.30
20	DN100 End Cap	100	1000	12.00	0.12	0.40	0.30	0.30
21	DN300 x 45° Bend	100	1000	72.00	0.72	0.90	0.80	0.30
22	DN300 x 22.5° Bend	100	1000	37.00	0.37	0.70	0.53	0.30
23	DN300 x 11.25° Bend	100	1000	19.00	0.19	0.50	0.38	0.30
24	DN250 x 6° Bend	100	1000	13.00	0.13	0.40	0.33	0.30
25	DN200 x 6° Bend	100	1000	8.10	0.08	0.40	0.30	0.30
26	DN100 End Cap	100	1000	43.00	0.43	0.70	0.61	0.30

THRUST BLOCK NOTES:

- CONCRETE THRUST BLOCKS ARE TO BE PROVIDED FOR ALL FITTINGS IN ACCORDANCE WITH TABLE.
- THRUST BLOCK DIMENSIONS ARE BASED ON THE MINIMUM ALLOWABLE HORIZONTAL BEARING PRESSURES OF THE SOIL AS SHOWN. IF GROUND CONDITIONS ENCOUNTERED INDICATE THAT THESE BEARING PRESSURES MAY NOT BE ACHIEVED, THRUST BLOCK DESIGN IS TO BE REVISED.
- THRUST BLOCKS ARE TO BE CONSTRUCTED SUCH THAT THEY TRANSFER THE THRUST ONTO UNDISTURBED GROUND. THRUST BLOCKS ARE NOT TO INTERFERE WITH OTHER SERVICES.
- FINISH THRUST BLOCKS APPROXIMATELY 100mm ABOVE THE TOP OF THE FITTING OR BEARING PAD AND EXTEND TO THE FLOOR OF THE TRENCH OR DEEPER IF NECESSARY TO ACHIEVE THE REQUIRED THRUST AREA (N). MAXIMUM ENCASEMENT TO BE 180°.
- CONCRETE FOR THE THRUST BLOCKS TO BE GRADE S25 USING CEMENT TYPE "SR" TO AS3972. CONCRETE TO BE MECHANICALLY VIBRATED.
- CONCRETE THRUST BLOCKS ARE TO BE CURED FOR A MINIMUM OF 7 DAYS BEFORE BEING SUBJECTED TO ANY THRUST LOAD.
- REFER TO WAT-1205-V FOR GENERAL FITTING THRUST BLOCK ARRANGEMENTS.
- REFER TO WAT-1207-V FOR GENERAL VALVE AND VERTICAL BEND THRUST BLOCK ARRANGEMENTS.

100mm AT FULL SIZE

REV.	DATE	AMENDMENT	DRAWN	CHECK	DESIGN	VERIFY	SCALES
A	20.08.2014	INITIAL DRAFT	J.N.	L.G.	J.N.		
B	03.09.2014	AMENDED ISSUE	T.M.	L.G.	J.N.		
0	22.10.2014	CONSTRUCTION ISSUE	J.N.	L.G.	J.N.	L.G.	
1	19.11.2014	AMENDED CONSTRUCTION ISSUE	J.N.	L.G.	J.N.	L.G.	
2	07.04.2015	AMENDED CONSTRUCTION ISSUE	J.N.	L.G.	J.N.	L.G.	
WAC	27.10.2015	WORK AS CONSTRUCTED - RAR	A.S.A.		J.N.	B.K.	

adw Johnson

Hunter Office
Unit 7/335 Hillsborough Rd
Warners Bay N.S.W. 2282
Phone: (02) 4978 5100
Fax: (02) 4978 5199
email: hunter@adwjohnson.com.au
www.adwjohnson.com.au
ABN 62 129 445 398

CLIENT

JOHNSON PROPERTY GROUP

PROPERTY DESCRIPTION

PROPOSED SUBDIVISION
STAGE 1E WATAGAN PARK
McCULLOUGH STREET, COORANBONG
DA/573/2014

SURVEYED: ADW Johnson DATUM: A.H.D.

PROJECT	POTABLE WATER, RECYCLED WATER AND PRESSURE SEWER RETICULATION		
PLAN TITLE	THRUST BLOCK DETAILS		
PROJECT No.	DISCIPLINE	NUMBER	REV.
239078(1E)	WAT	027	WAC